

For Research Use Only

# KHK Polyclonal antibody

Catalog Number: 15681-1-AP

Featured Product

7 Publications



## Basic Information

<b>Catalog Number:</b> 15681-1-AP	<b>GenBank Accession Number:</b> BC006233	<b>Purification Method:</b> Antigen affinity purification
<b>Size:</b> 150ul, Concentration: 400 µg/ml by Nanodrop and 233 µg/ml by Bradford method using BSA as the standard;	<b>GeneID (NCBI):</b> 3795	<b>Recommended Dilutions:</b> WB 1:500-1:2000 IP 0.5-4.0 ug for IP and 1:500-1:1000 for WB
<b>Source:</b> Rabbit	<b>Full Name:</b> ketohehexokinase (fructokinase)	<b>IHC 1:200-1:800</b>
<b>Isotype:</b> IgG	<b>Calculated MW:</b> 298 aa, 33 kDa	<b>IF 1:50-1:500</b>
<b>Immunogen Catalog Number:</b> AG8182	<b>Observed MW:</b> 33-35 kDa	

## Applications

**Tested Applications:**  
IF, IHC, IP, WB, ELISA

**Cited Applications:**  
IHC, WB

**Species Specificity:**  
human, mouse, rat

**Cited Species:**  
human, mouse

**Note-IHC: suggested antigen retrieval with TE buffer pH 9.0; (\*) Alternatively, antigen retrieval may be performed with citrate buffer pH 6.0**

**Positive Controls:**

**WB:** mouse liver tissue, human liver tissue, rat liver tissue

**IP:** mouse liver tissue, HepG2 cells

**IHC:** human liver tissue,

**IF:** HepG2 cells,

## Background Information

Ketohehexokinase catalyzes conversion of fructose to fructose-1-phosphate, it is the first enzyme with a specialized pathway that catabolizes dietary fructose. Fructose metabolism seems to provide cancer cells with the supplementary fuel required for proliferation and metastasis.

## Notable Publications

Author	Pubmed ID	Journal	Application
Xiajing Fan	28970966	PeerJ	WB
Scott P Allen	31647549	Brain	WB
Cholsoon Jang	32694791	Nat Metab	WB

## Storage

**Storage:**

Store at -20°C. Stable for one year after shipment.

**Storage Buffer:**

PBS with 0.02% sodium azide and 50% glycerol pH 7.3.

Aliquoting is unnecessary for -20°C storage

\*\*\* 20ul sizes contain 0.1% BSA

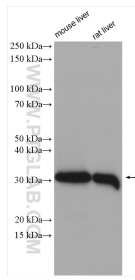
For technical support and original validation data for this product please contact:

T: 1 (888) 4PTGLAB (1-888-478-4522) (toll free in USA), or 1(312) 455-8498 (outside USA)

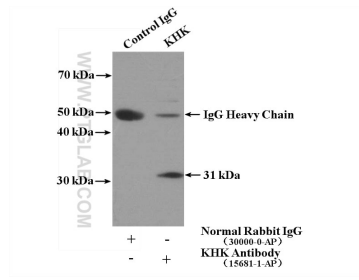
E: proteintech@ptglab.com  
W: ptglab.com

This product is exclusively available under Proteintech Group brand and is not available to purchase from any other manufacturer.

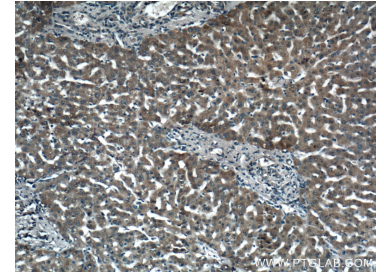
## Selected Validation Data



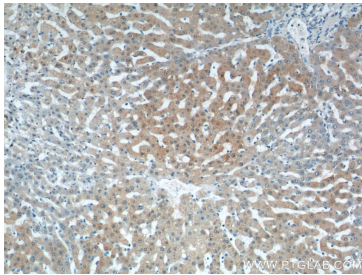
Various lysates were subjected to SDS PAGE followed by western blot with 15681-1-AP (KHK antibody) at dilution of 1:1000 incubated at room temperature for 1.5 hours.



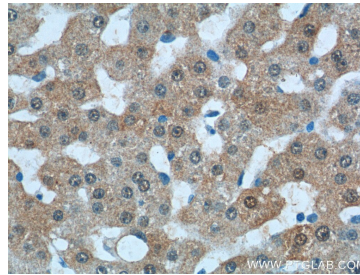
IP Result of anti-KHK (IP:15681-1-AP, 4ug; Detection:15681-1-AP 1:500) with mouse liver tissue lysate 4000ug.



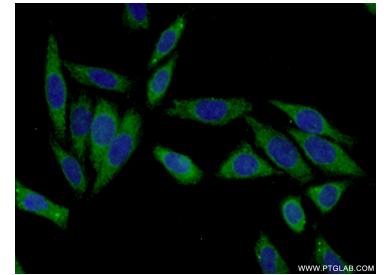
Immunohistochemical analysis of paraffin-embedded human liver tissue slide using 15681-1-AP (KHK Antibody) at dilution of 1:200 (under 10x lens).



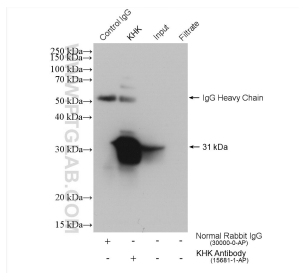
Immunohistochemical analysis of paraffin-embedded human liver tissue slide using 15681-1-AP (KHK Antibody) at dilution of 1:400 (under 10x lens).



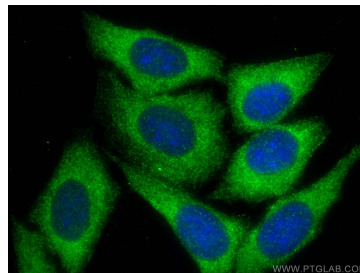
Immunohistochemical analysis of paraffin-embedded human liver tissue slide using 15681-1-AP (KHK Antibody) at dilution of 1:400 (under 40x lens).



Immunofluorescent analysis of (-20°C Ethanol) fixed HepG2 cells using 15681-1-AP (KHK antibody) at dilution of 1:50 and Alexa Fluor 488-conjugated AffiniPure Goat Anti-Rabbit IgG(H+L).



IP result of anti-KHK(IP:15681-1-AP, 4ug; Detection:15681-1-AP 1:1000) with HepG2 cells lysate 960 ug.



Immunofluorescent analysis of (-20°C Methanol) fixed HepG2 cells using KHK antibody (15681-1-AP) at dilution of 1:200 and CoralLite®488-Conjugated AffiniPure Goat Anti-Rabbit IgG(H+L).