

For Research Use Only

MRPL45 Polyclonal antibody

Catalog Number: 15682-1-AP

Featured Product

15 Publications



Basic Information

Catalog Number:

15682-1-AP

Size:

150ul, Concentration: 450 ug/ml by Nanodrop and 267 ug/ml by Bradford method using BSA as the standard;

Source:

Rabbit

Isotype:

IgG

Immunogen Catalog Number:

AG8184

GenBank Accession Number:

BC006235

GeneID (NCBI):

84311

UNIPROT ID:

Q9BRJ2

Full Name:

mitochondrial ribosomal protein L45

Calculated MW:

35 kDa

Observed MW:

35 kDa

Purification Method:

Antigen affinity purification

Recommended Dilutions:

WB 1:1000-1:4000

IP 0.5-4.0 ug for 1.0-3.0 mg of total protein lysate

IHC 1:50-1:500

IF/ICC 1:200-1:800

Applications

Tested Applications:

WB, IHC, IF/ICC, IP, ELISA

Cited Applications:

WB, IF

Species Specificity:

human, mouse, rat

Cited Species:

human, mouse

Note-IHC: suggested antigen retrieval with TE buffer pH 9.0; (*) Alternatively, antigen retrieval may be performed with citrate buffer pH 6.0

Positive Controls:

WB : HeLa cells, mouse liver tissue, SKOV-3 cells

IP : HeLa cells,

IHC : human ovary tumor tissue, mouse brain tissue

IF/ICC : HeLa cells,

Background Information

Mammalian mitochondrial ribosomal proteins are encoded by nuclear genes and help in protein synthesis within the mitochondrion. Mitochondrial ribosomes (mitoribosomes) consist of a small 28S subunit and a large 39S subunit. MRPL45 is a 39S subunit protein.

Notable Publications

Author	Pubmed ID	Journal	Application
Uwe Richter	30262910	Nat Commun	WB
Benedetta Ruzzenente	30252186	Hum Mutat	WB
Luis Daniel Cruz-Zaragoza	34672953	Cell	WB

Storage

Storage:

Store at -20°C. Stable for one year after shipment.

Storage Buffer:

PBS with 0.02% sodium azide and 50% glycerol pH 7.3.

Aliquoting is unnecessary for -20°C storage

*** 20ul sizes contain 0.1% BSA

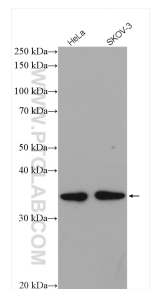
For technical support and original validation data for this product please contact:

T: 1 (888) 4PTGLAB (1-888-478-4522) (toll free in USA), or 1(312) 455-8498 (outside USA)

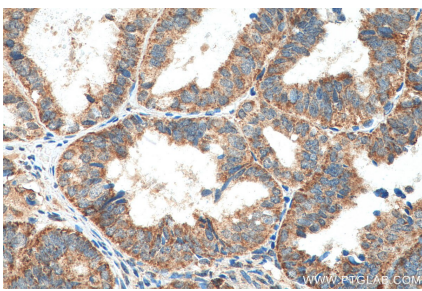
E: proteintech@ptglab.com
W: ptglab.com

This product is exclusively available under Proteintech Group brand and is not available to purchase from any other manufacturer.

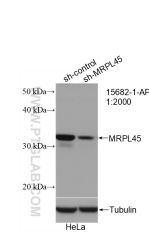
Selected Validation Data



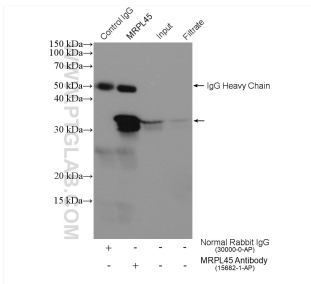
Various lysates were subjected to SDS PAGE followed by western blot with 15682-1-AP (MRPL45 antibody) at dilution of 1:2000 incubated at room temperature for 1.5 hours.



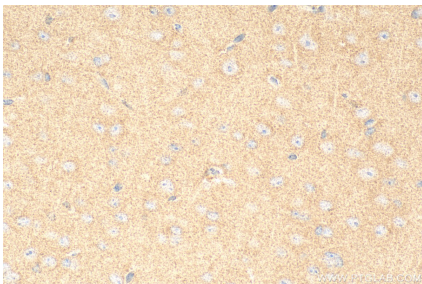
Immunohistochemical analysis of paraffin-embedded human ovary tumor tissue slide using 15682-1-AP (MRPL45 antibody) at dilution of 1:200 (under 40x lens). Heat mediated antigen retrieval with Tris-EDTA buffer (pH 9.0).



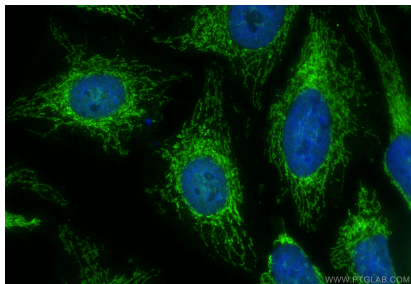
WB result of MRPL45 antibody (15682-1-AP; 1:2000; incubated at room temperature for 1.5 hours) with sh-Control and sh-MRPL45 transfected HeLa cells.



IP result of anti-MRPL45 (IP:15682-1-AP, 4ug; Detection:15682-1-AP 1:1000) with HeLa cells lysate 680 ug.



Immunohistochemical analysis of paraffin-embedded mouse brain tissue slide using 15682-1-AP (MRPL45 antibody) at dilution of 1:200 (under 40x lens). Heat mediated antigen retrieval with Tris-EDTA buffer (pH 9.0).



Immunofluorescent analysis of (4% PFA) fixed HeLa cells using MRPL45 antibody (15682-1-AP) at dilution of 1:400 and CoraLite@488-Conjugated Goat Anti-Rabbit IgG(H+L) (SA00013-2).