

For Research Use Only

REEP2 Polyclonal antibody

Catalog Number: 15684-1-AP

Featured Product

14 Publications



Basic Information

Catalog Number:

15684-1-AP

Size:

150ul, Concentration: 450 ug/ml by Nanodrop and 173 ug/ml by Bradford method using BSA as the standard;

Source:

Rabbit

Isotype:

IgG

Immunogen Catalog Number:

AG8186

GenBank Accession Number:

BC006218

GeneID (NCBI):

51308

UNIPROT ID:

Q9BRK0

Full Name:

receptor accessory protein 2

Calculated MW:

252 aa, 28 kDa

Observed MW:

28 kDa

Purification Method:

Antigen affinity purification

Recommended Dilutions:

WB 1:2000-1:12000

IHC 1:50-1:500

IF-P 1:50-1:500

Applications

Tested Applications:

WB, IHC, IF-P, FC (Intra), ELISA

Cited Applications:

WB, IF, IP

Species Specificity:

human, mouse, rat

Cited Species:

human, mouse, monkey

Note-IHC: suggested antigen retrieval with TE buffer pH 9.0; (*) Alternatively, antigen retrieval may be performed with citrate buffer pH 6.0

Positive Controls:

WB : mouse brain tissue, human heart tissue, mouse eye tissue, human skeletal muscle tissue, rat brain tissue

IHC : mouse brain tissue,

IF-P : mouse brain tissue,

Notable Publications

Author	Pubmed ID	Journal	Application
Benoît Renvoisé	27638887	Hum Mol Genet	WB
Peng-Peng Zhu	35348668	Hum Mol Genet	WB
Pengli Zheng	30030520	Cell Res	WB

Storage

Storage:

Store at -20°C. Stable for one year after shipment.

Storage Buffer:

PBS with 0.02% sodium azide and 50% glycerol pH 7.3.

Aliquoting is unnecessary for -20°C storage

*** 20ul sizes contain 0.1% BSA

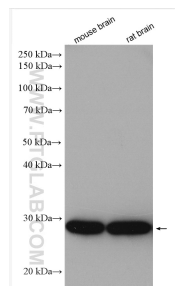
For technical support and original validation data for this product please contact:

T: 1 (888) 4PTGLAB (1-888-478-4522) (toll free in USA), or 1(312) 455-8498 (outside USA)

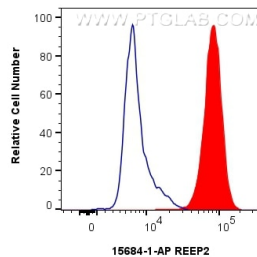
E: proteintech@ptglab.com
W: ptglab.com

This product is exclusively available under Proteintech Group brand and is not available to purchase from any other manufacturer.

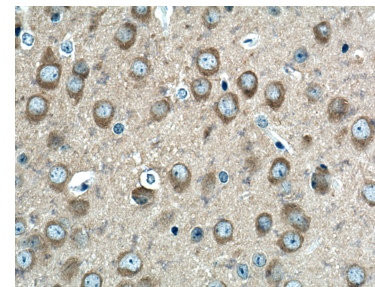
Selected Validation Data



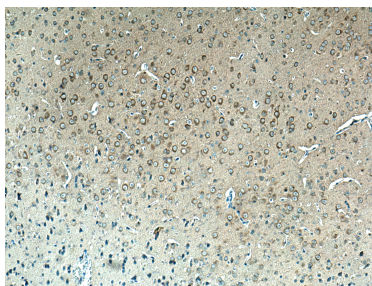
Various lysates were subjected to SDS PAGE followed by western blot with 15684-1-AP (REEP2 antibody) at dilution of 1:6000 incubated at room temperature for 1.5 hours.



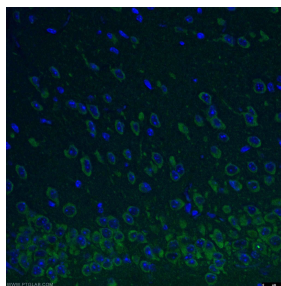
1x10⁶ SH-SY5Y cells were intracellularly stained with 0.4 ug REEP2 Polyclonal antibody (15684-1-AP) and CoraLite®488-Conjugated Goat Anti-Rabbit IgG(H+L) (SA00013-2)(red), or 0.4 ug Rabbit IgG control Rabbit PolyAb (30000-0-AP) (blue). Cells were fixed with 4% PFA and permeabilized with Flow Cytometry Perm Buffer (PF00011-C).



Immunohistochemical analysis of paraffin-embedded mouse brain tissue slide using 15684-1-AP (REEP2 antibody) at dilution of 1:200 (under 40x lens). Heat mediated antigen retrieval with Tris-EDTA buffer (pH 9.0).



Immunohistochemical analysis of paraffin-embedded mouse brain tissue slide using 15684-1-AP (REEP2 antibody) at dilution of 1:200 (under 10x lens). Heat mediated antigen retrieval with Tris-EDTA buffer (pH 9.0).



Immunofluorescent analysis of (4% PFA) fixed mouse brain tissue using 15684-1-AP (REEP2 antibody) at dilution of 1:50 and CoraLite488-Conjugated Goat Anti-Rabbit IgG(H+L).