

For Research Use Only

# REEP2 Polyclonal antibody, PBS Only

Catalog Number: 15684-1-PBS

Featured Product



## Basic Information

**Catalog Number:**

15684-1-PBS

**Size:**

100ug, Concentration: 1 mg/ml by Nanodrop;

**Source:**

Rabbit

**Isotype:**

IgG

**Immunogen Catalog Number:**

AG8186

**GenBank Accession Number:**

BC006218

**GeneID (NCBI):**

51308

**UNIPROT ID:**

Q9BRKO

**Full Name:**

receptor accessory protein 2

**Calculated MW:**

252 aa, 28 kDa

**Observed MW:**

28 kDa

**Purification Method:**

Antigen affinity purification

## Applications

**Tested Applications:**

WB, IHC, IF-P, FC (Intra), Indirect ELISA

**Species Specificity:**

human, mouse, rat

## Storage

**Storage:**

Store at -80°C.

**Storage Buffer:**

PBS only, pH7.3

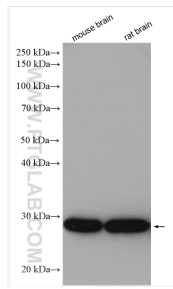
For technical support and original validation data for this product please contact:

T: 1 (888) 4PTGLAB (1-888-478-4522) (toll free in USA), or 1(312) 455-8498 (outside USA)

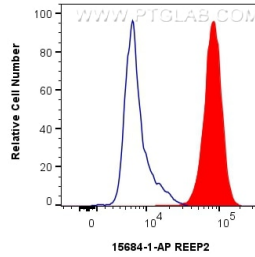
E: [proteintech@ptglab.com](mailto:proteintech@ptglab.com)  
W: [ptglab.com](http://ptglab.com)

This product is exclusively available under Proteintech Group brand and is not available to purchase from any other manufacturer.

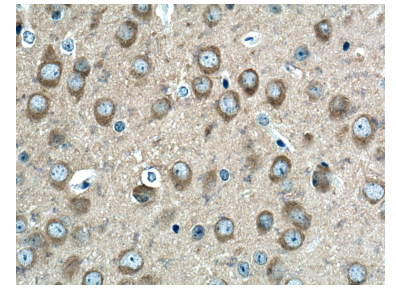
## Selected Validation Data



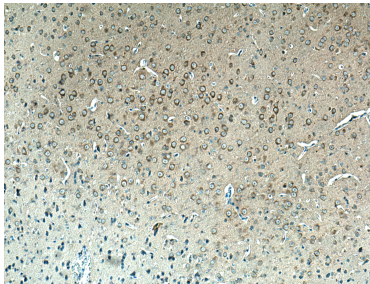
Various lysates were subjected to SDS PAGE followed by western blot with 15684-1-AP (REEP2 antibody) at dilution of 1:6000 incubated at room temperature for 1.5 hours. This data was developed using the same antibody clone with 15684-1-PBS in a different storage buffer formulation.



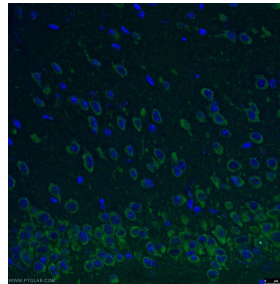
$1 \times 10^6$  SH-SY5Y cells were intracellularly stained with 0.4 ug REEP2 Polyclonal antibody (15684-1-AP) and CoraLite®488-Conjugated AffiniPure Goat Anti-Rabbit IgG(H+L) (SA00013-2)(red), or 0.4 ug rabbit IgG isotype control (blue). Cells were fixed with 4% PFA and permeabilized with Flow Cytometry Perm Buffer. This data was developed using the same antibody clone with 15684-1-PBS in a different storage buffer formulation.



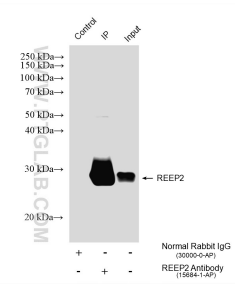
Immunohistochemical analysis of paraffin-embedded mouse brain tissue slide using 15684-1-AP (REEP2 antibody) at dilution of 1:200 (under 40x lens). Heat mediated antigen retrieval with Tris-EDTA buffer (pH 9.0). This data was developed using the same antibody clone with 15684-1-PBS in a different storage buffer formulation.



Immunohistochemical analysis of paraffin-embedded mouse brain tissue slide using 15684-1-AP (REEP2 antibody) at dilution of 1:200 (under 10x lens). Heat mediated antigen retrieval with Tris-EDTA buffer (pH 9.0). This data was developed using the same antibody clone with 15684-1-PBS in a different storage buffer formulation.



Immunofluorescent analysis of (4% PFA) fixed mouse brain tissue using 15684-1-AP (REEP2 antibody) at dilution of 1:50 and CoraLite488-Conjugated AffiniPure Goat Anti-Rabbit IgG(H+L). This data was developed using the same antibody clone with 15684-1-PBS in a different storage buffer formulation.



IP result of anti-REEP2 (IP:15684-1-AP, 4ug; Detection:15684-1-AP 1:5000) with mouse brain tissue lysate 1680 ug. This data was developed using the same antibody clone with 15684-1-PBS in a different storage buffer formulation.