

For Research Use Only

AP2B1 Polyclonal antibody

Catalog Number: 15690-1-AP

Featured Product

14 Publications



Basic Information

Catalog Number:

15690-1-AP

Size:

150ul, Concentration: 550 ug/ml by Nanodrop and 347 ug/ml by Bradford method using BSA as the standard;

Source:

Rabbit

Isotype:

IgG

Immunogen Catalog Number:

AG8248

GenBank Accession Number:

BC006201

GeneID (NCBI):

163

UNIPROT ID:

P63010

Full Name:

adaptor-related protein complex 2, beta 1 subunit

Calculated MW:

105 kDa

Observed MW:

100-105 kDa

Purification Method:

Antigen affinity purification

Recommended Dilutions:

WB 1:5000-1:50000

IP 0.5-4.0 ug for 1.0-3.0 mg of total protein lysate

IF/ICC 1:1000-1:4000

Applications

Tested Applications:

WB, IF/ICC, IP, ELISA

Cited Applications:

WB, IF

Species Specificity:

human, mouse, rat

Cited Species:

human, mouse, pig, monkey

Positive Controls:

WB: HeLa cells, SH-SY5Y cells, K-562 cells, C6 cells, NIH/3T3 cells

IP: K-562 cells,

IF/ICC: HeLa cells,

Background Information

AP2B1 is a component of the adaptor protein complex 2 (AP-2). AP complexes are cytosolic heterotetramers that mediate the sorting of membrane proteins in the secretory and endocytic pathways. AP complexes are involved in the formation of clathrin-coated vesicles (CCVs) by recruiting the scaffold protein, clathrin. AP complexes also play a pivotal role in the cargo selection by recognizing the sorting signals within the cytoplasmic tail of integral membrane proteins. AP-2 works on the plasma membrane to internalize cargo in clathrin-mediated endocytosis.

Notable Publications

Author	Pubmed ID	Journal	Application
Miwa Sohda	25436429	Biochem Biophys Res Commun	IF
Guangwen Wang	31694949	J Virol	WB
Yuriko Katsumata	31748784	J Neuropathol Exp Neurol	WB

Storage

Storage:

Store at -20°C. Stable for one year after shipment.

Storage Buffer:

PBS with 0.02% sodium azide and 50% glycerol pH 7.3.

Aliquoting is unnecessary for -20°C storage

*** 20ul sizes contain 0.1% BSA

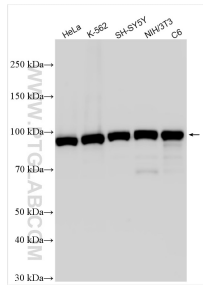
For technical support and original validation data for this product please contact:

T: 1 (888) 4PTGLAB (1-888-478-4522) (toll free in USA), or 1(312) 455-8498 (outside USA)

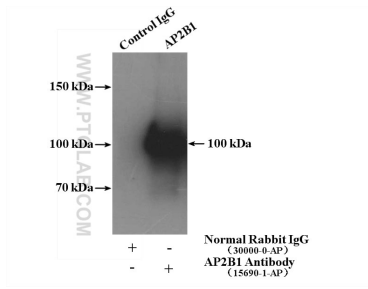
E: proteintech@ptglab.com
W: ptglab.com

This product is exclusively available under Proteintech Group brand and is not available to purchase from any other manufacturer.

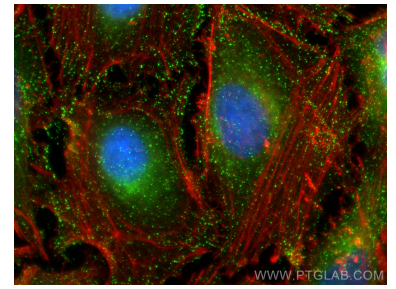
Selected Validation Data



Various lysates were subjected to SDS PAGE followed by western blot with 15690-1-AP (AP2B1 antibody) at dilution of 1:10000 incubated at room temperature for 1.5 hours.



IP result of anti-AP2B1 (IP:15690-1-AP, 4ug; Detection:15690-1-AP 1:500) with K-562 cells lysate 3200ug.



Immunofluorescent analysis of (4% PFA) fixed HeLa cells using AP2B1 antibody (15690-1-AP) at dilution of 1:2000 and Multi-rAb CoraLite® Plus 488-Goat Anti-Rabbit Recombinant Secondary Antibody (H+L) (RGAR002), CL594-phalloidin (red).