

For Research Use Only

RPS20 Polyclonal antibody

Catalog Number: 15692-1-AP

Featured Product

6 Publications



Basic Information

Catalog Number:

15692-1-AP

Size:

150ul, Concentration: 400 ug/ml by Nanodrop and 240 ug/ml by Bradford method using BSA as the standard;

Source:

Rabbit

Isotype:

IgG

Immunogen Catalog Number:

AG8257

GenBank Accession Number:

BC007507

GeneID (NCBI):

6224

UNIPROT ID:

P60866

Full Name:

ribosomal protein S20

Calculated MW:

13 kDa

Observed MW:

16 kDa

Purification Method:

Antigen affinity purification

Recommended Dilutions:

WB 1:500-1:2400

Applications

Tested Applications:

WB, ELISA

Cited Applications:

WB, IHC

Species Specificity:

human, mouse, rat

Cited Species:

human, mouse

Positive Controls:

WB: MCF7 cells, HEK-293 cells, HepG2 cells, Jurkat cells

Background Information

Ribosomes, the organelles that catalyze protein synthesis, consist of a small 40S subunit and a large 60S subunit. Together these subunits are composed of 4 RNA species and approximately 80 structurally distinct proteins. RPS20 is a component of the 40S subunit. The protein belongs to the S10P family of ribosomal proteins. It is located in the cytoplasm.

Notable Publications

Author	Pubmed ID	Journal	Application
Cheng Shen	36484407	Oncol Rep	WB, IHC
Joanna R Kovalski	39905246	Nat Cell Biol	WB
Joanna R Kovalski	39416102	bioRxiv	WB

Storage

Storage:

Store at -20°C. Stable for one year after shipment.

Storage Buffer:

PBS with 0.02% sodium azide and 50% glycerol pH 7.3.

Aliquoting is unnecessary for -20°C storage

*** 20ul sizes contain 0.1% BSA

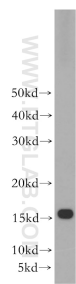
For technical support and original validation data for this product please contact:

T: 1 (888) 4PTGLAB (1-888-478-4522) (toll free in USA), or 1(312) 455-8498 (outside USA)

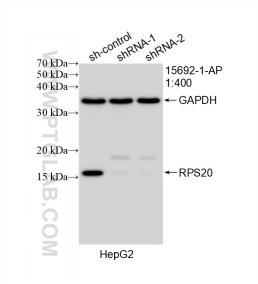
E: proteintech@ptglab.com
W: ptglab.com

This product is exclusively available under Proteintech Group brand and is not available to purchase from any other manufacturer.

Selected Validation Data



MCF7 cells were subjected to SDS PAGE followed by western blot with 15692-1-AP (RPS20 antibody) at dilution of 1:500 incubated at room temperature for 1.5 hours.



WB result of RPS20 antibody (15692-1-AP; 1:400; incubated at room temperature for 1.5 hours) with sh-Control and sh-RPS20 transfected HepG2 cells.