

For Research Use Only

SSRP1 Polyclonal antibody

Catalog Number: 15696-1-AP

Featured Product

6 Publications



Basic Information

Catalog Number: 15696-1-AP	GenBank Accession Number: BC005116	Purification Method: Antigen affinity purification
Size: 150ul, Concentration: 240 µg/ml by Nanodrop and 173 µg/ml by Bradford method using BSA as the standard;	GeneID (NCBI): 6749	Recommended Dilutions: WB 1:500-1:3000 IP 0.5-4.0 ug for IP and 1:500-1:1000 for WB
Source: Rabbit	Full Name: structure specific recognition protein 1	IHC 1:20-1:200 IF 1:50-1:500
Isotype: IgG	Calculated MW: 81 kDa	
Immunogen Catalog Number: AG8318	Observed MW: 86 kDa	

Applications

Tested Applications:
IF, IHC, IP, WB, ELISA

Cited Applications:
IHC, WB

Species Specificity:
human, mouse, rat

Cited Species:
human, mouse

Note-IHC: suggested antigen retrieval with TE buffer pH 9.0; (*) Alternatively, antigen retrieval may be performed with citrate buffer pH 6.0

Positive Controls:

WB: HeLa cells, mouse testis tissue

IP: mouse testis tissue,

IHC: human ovary tumor tissue,

IF: HeLa cells,

Background Information

Notable Publications

Author	Pubmed ID	Journal	Application
Qian Wang	31839745	Int J Med Sci	WB,IHC
Ikumi Ohsawa	33749947	FASEB J	IHC
Jianguo Yang	33691114	Cell Rep	WB

Storage

Storage:

Store at -20°C. Stable for one year after shipment.

Storage Buffer:

PBS with 0.02% sodium azide and 50% glycerol pH 7.3.

Aliquoting is unnecessary for -20°C storage

*** 20ul sizes contain 0.1% BSA

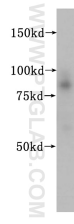
For technical support and original validation data for this product please contact:

T: 1 (888) 4PTGLAB (1-888-478-4522) (toll free in USA), or 1(312) 455-8498 (outside USA)

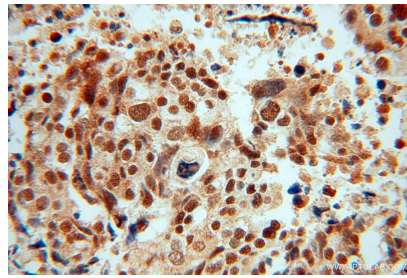
E: proteintech@ptglab.com
W: ptglab.com

This product is exclusively available under Proteintech Group brand and is not available to purchase from any other manufacturer.

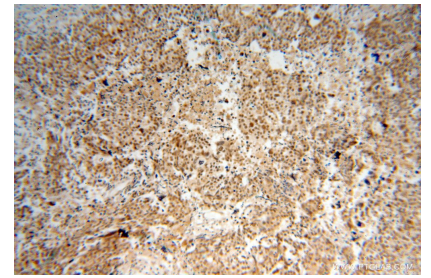
Selected Validation Data



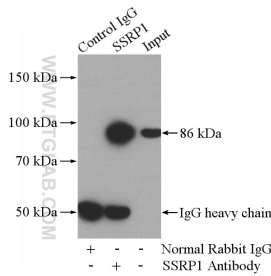
HeLa cells were subjected to SDS PAGE followed by western blot with 15696-1-AP (SSRP1 antibody) at dilution of 1:500 incubated at room temperature for 1.5 hours.



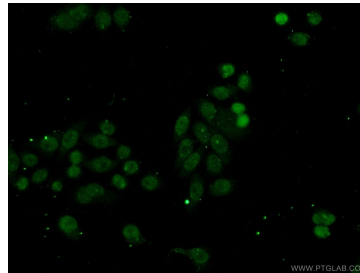
Immunohistochemical analysis of paraffin-embedded human ovary tumor using 15696-1-AP (SSRP1 antibody) at dilution of 1:100 (under 40x lens).



Immunohistochemical analysis of paraffin-embedded human ovary tumor using 15696-1-AP (SSRP1 antibody) at dilution of 1:100 (under 10x lens).



IP Result of anti-SSRP1 (IP:15696-1-AP, 4ug; Detection:15696-1-AP 1:500) with mouse testis tissue lysate 2400ug.



Immunofluorescent analysis of (-20°C Ethanol) fixed HeLa cells using 15696-1-AP (SSRP1 antibody) at dilution of 1:50 and Alexa Fluor 488-conjugated AffiniPure Goat Anti-Rabbit IgG(H+L).