

For Research Use Only

# CLPP Polyclonal antibody

Catalog Number: 15698-1-AP

Featured Product

47 Publications



## Basic Information

### Catalog Number:

15698-1-AP

### Size:

150ul, Concentration: 800 ug/ml by Nanodrop;

### Source:

Rabbit

### Isotype:

IgG

### Immunogen Catalog Number:

AG8325

### GenBank Accession Number:

BC002956

### GeneID (NCBI):

8192

### UNIPROT ID:

Q16740

### Full Name:

ClpP caseinolytic peptidase, ATP-dependent, proteolytic subunit homolog (E. coli)

### Calculated MW:

30 kDa

### Observed MW:

26 kDa, 30 kDa

### Purification Method:

Antigen affinity purification

### Recommended Dilutions:

WB 1:1000-1:8000

IP 0.5-4.0 ug for 1.0-3.0 mg of total protein lysate

IHC 1:50-1:500

IF/ICC 1:50-1:500

## Applications

### Tested Applications:

WB, IHC, IF/ICC, IP, ELISA

### Cited Applications:

WB, IHC, IF, CoIP

### Species Specificity:

human, mouse, rat

### Cited Species:

human, mouse, rat, chicken, zebrafish, goat

**Note-IHC: suggested antigen retrieval with TE buffer pH 9.0; (\*) Alternatively, antigen retrieval may be performed with citrate buffer pH 6.0**

### Positive Controls:

**WB** : human placenta tissue, rat heart tissue, K-562 cells, mouse heart tissue

**IP** : mouse skeletal muscle tissue,

**IHC** : human liver cancer tissue, human kidney tissue, human testis tissue, human liver tissue

**IF/ICC** : HeLa cells,

## Background Information

CLPP is the putative ATP-dependent Clp protease proteolytic subunit and also named as endopeptidase Clp. It belongs to the peptidase S14 family. Clp cleaves peptides in various proteins in a process that requires ATP hydrolysis. It may be responsible for a fairly general and central housekeeping function rather than for the degradation of specific substrates. This protein has a transit peptide of 56 amino acid.

## Notable Publications

Author	Pubmed ID	Journal	Application
Olga Zurita Rendón	30061372	Mol Cell Biol	
Saara Forsström	31523008	Cell Metab	WB
Uwe Richter	26504172	J Cell Biol	WB

## Storage

### Storage:

Store at -20°C. Stable for one year after shipment.

### Storage Buffer:

PBS with 0.02% sodium azide and 50% glycerol pH 7.3.

Aliquoting is unnecessary for -20°C storage

\*\*\* 20ul sizes contain 0.1% BSA

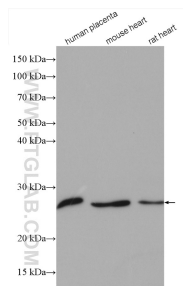
For technical support and original validation data for this product please contact:

T: 1 (888) 4PTGLAB (1-888-478-4522) (toll free in USA), or 1(312) 455-8498 (outside USA)

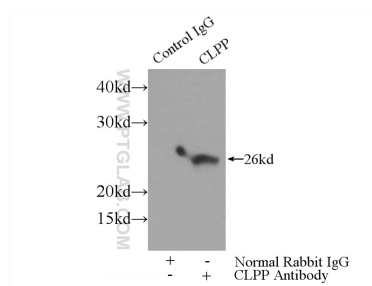
E: proteintech@ptglab.com  
W: ptglab.com

This product is exclusively available under Proteintech Group brand and is not available to purchase from any other manufacturer.

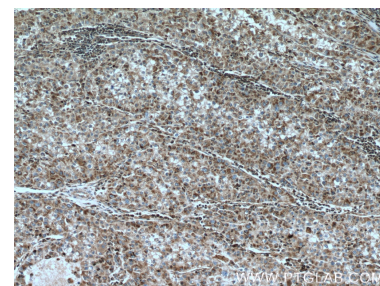
## Selected Validation Data



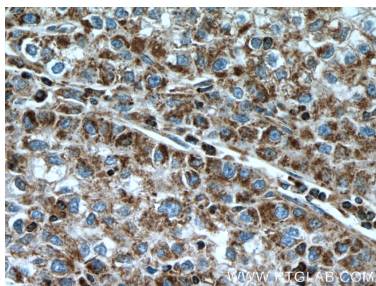
Various lysates were subjected to SDS PAGE followed by western blot with 15698-1-AP (CLPP antibody) at dilution of 1:4000 incubated at room temperature for 1.5 hours.



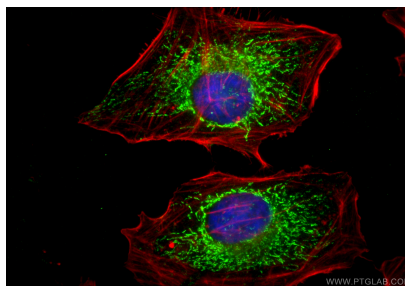
IP result of anti-CLPP (IP:15698-1-AP, 3ug; Detection:15698-1-AP 1:500) with mouse skeletal muscle tissue lysate 4000ug.



Immunohistochemical analysis of paraffin-embedded human liver cancer tissue slide using 15698-1-AP (CLPP Antibody) at dilution of 1:200 (under 10x lens). Heat mediated antigen retrieval with Tris-EDTA buffer (pH 9.0).



Immunohistochemical analysis of paraffin-embedded human liver cancer tissue slide using 15698-1-AP (CLPP Antibody) at dilution of 1:200 (under 40x lens). Heat mediated antigen retrieval with Tris-EDTA buffer (pH 9.0).



Immunofluorescent analysis of (4% PFA) fixed HeLa cells using CLPP antibody (15698-1-AP) at dilution of 1:200 and CoraLite®488-Conjugated Goat Anti-Rabbit IgG(H+L) (SA00013-2), CL594-phalloidin (red).