

For Research Use Only

# GSS Polyclonal antibody

Catalog Number: 15712-1-AP

Featured Product

14 Publications



## Basic Information

<b>Catalog Number:</b> 15712-1-AP	<b>GenBank Accession Number:</b> BC007927	<b>Purification Method:</b> Antigen affinity purification
<b>Size:</b> 150ul , Concentration: 400 µg/ml by Nanodrop and 300 µg/ml by Bradford method using BSA as the standard;	<b>GeneID (NCBI):</b> 2937	<b>Recommended Dilutions:</b> WB 1:1000-1:4000 IHC 1:100-1:400 IF 1:50-1:500
<b>Source:</b> Rabbit	<b>Full Name:</b> glutathione synthetase	
<b>Isotype:</b> IgG	<b>Calculated MW:</b> 474 aa, 52 kDa	
<b>Immunogen Catalog Number:</b> AG8338	<b>Observed MW:</b> 52 kDa	

## Applications

<b>Tested Applications:</b> IF, IHC, WB, ELISA	<b>Positive Controls:</b> WB : CHO cells, HEK-293 cells, mouse liver tissue, rat liver tissue IHC : human kidney tissue, IF : MDCK cells,
<b>Cited Applications:</b> IF, IHC, WB	
<b>Species Specificity:</b> human, mouse, rat, pig, hamster, canine	
<b>Cited Species:</b> human, rat, mouse	
<b>Note-IHC: suggested antigen retrieval with TE buffer pH 9.0; (*) Alternatively, antigen retrieval may be performed with citrate buffer pH 6.0</b>	

## Background Information

### Notable Publications

Author	Pubmed ID	Journal	Application
Yang Yang	30326393	Redox Biol	WB
Edwin J Squirewell	32873592	Drug Metab Dispos	WB
Peng Zhang	36439878	Int J Biol Sci	WB

## Storage

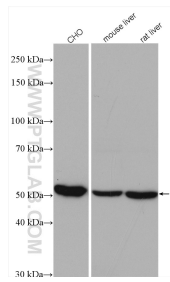
**Storage:**  
Store at -20°C. Stable for one year after shipment.  
**Storage Buffer:**  
PBS with 0.02% sodium azide and 50% glycerol pH 7.3.  
Aliquoting is unnecessary for -20°C storage

\*\*\* 20ul sizes contain 0.1% BSA

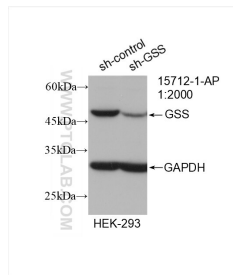
For technical support and original validation data for this product please contact:  
T: 1 (888) 4PTGLAB (1-888-478-4522) (toll free in USA), or 1(312) 455-8498 (outside USA)  
E: proteintech@ptglab.com  
W: ptglab.com

This product is exclusively available under Proteintech Group brand and is not available to purchase from any other manufacturer.

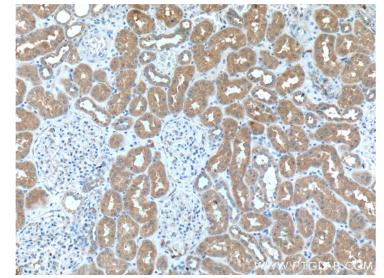
## Selected Validation Data



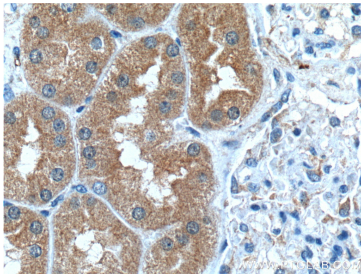
Various lysates were subjected to SDS PAGE followed by western blot with 15712-1-AP (GSS antibody) at dilution of 1:2000 incubated at room temperature for 1.5 hours.



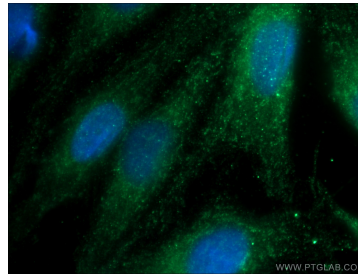
WB result of GSS antibody (15712-1-AP; 1:2000; incubated at room temperature for 1.5 hours) with sh-Control and sh-GSS transfected HEK-293 cells.



Immunohistochemical analysis of paraffin-embedded human kidney tissue slide using 15712-1-AP (GSS Antibody) at dilution of 1:200 (under 10x lens).



Immunohistochemical analysis of paraffin-embedded human kidney tissue slide using 15712-1-AP (GSS Antibody) at dilution of 1:200 (under 40x lens).



Immunofluorescent analysis of (-20°C Ethanol) fixed MDCK cells using 15712-1-AP (GSS antibody) at dilution of 1:50 and Alexa Fluor 488-conjugated AffiniPure Goat Anti-Rabbit IgG(H+L).