

For Research Use Only

# CLPB Polyclonal antibody

Catalog Number: 15743-1-AP **4 Publications**



## Basic Information

<b>Catalog Number:</b> 15743-1-AP	<b>GenBank Accession Number:</b> BC006404	<b>Purification Method:</b> Antigen affinity purification
<b>Size:</b> 150ul , Concentration: 650 µg/ml by Nanodrop;	<b>GeneID (NCBI):</b> 81570	<b>Recommended Dilutions:</b> WB 1:500-1:2000 IHC 1:100-1:400 IF 1:200-1:800
<b>Source:</b> Rabbit	<b>Full Name:</b> ClpB caseinolytic peptidase B homolog (E. coli)	
<b>Isotype:</b> IgG	<b>Calculated MW:</b> 707 aa, 79 kDa	
<b>Immunogen Catalog Number:</b> AG8165	<b>Observed MW:</b> 58 kDa	

## Applications

<b>Tested Applications:</b> IF, IHC, WB, ELISA	<b>Positive Controls:</b> WB : COLO 320 cells, HeLa cells, Jurkat cells, K-562 cells IHC : human heart tissue, IF : HeLa cells,
<b>Cited Applications:</b> WB	
<b>Species Specificity:</b> human, mouse, rat	
<b>Cited Species:</b> human, mouse	

**Note-IHC: suggested antigen retrieval with TE buffer pH 9.0; (\*) Alternatively, antigen retrieval may be performed with citrate buffer pH 6.0**

## Background Information

CLPB encodes a protein of 707 aa with a predicted molecular mass of approximately 79 kDa, presenting two conserved ATP-binding domains. CLPB is a member of the AAA+ protein family. This potential internal translation initiation site suggests that a smaller form of ClpB, with a theoretical molecular mass of approximately 58 kDa, may be produced. (PMID: 25597510, PMID: 255957260)

## Notable Publications

Author	Pubmed ID	Journal	Application
Takahiro Yoshinaka	31522117	iScience	WB
Ryan R Cupo	32573439	Elife	WB
Enrico Radaelli	37505079	Elife	WB

## Storage

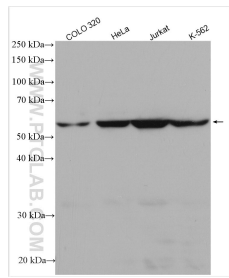
**Storage:**  
Store at -20°C. Stable for one year after shipment.  
**Storage Buffer:**  
PBS with 0.02% sodium azide and 50% glycerol pH 7.3.  
Aliquoting is unnecessary for -20°C storage

\*\*\* 20ul sizes contain 0.1% BSA

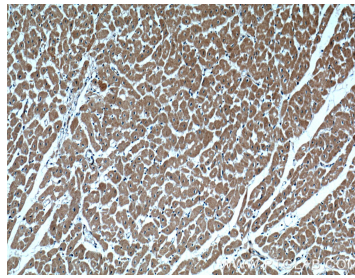
For technical support and original validation data for this product please contact:  
T: 1 (888) 4PTGLAB (1-888-478-4522) (toll free in USA), or 1(312) 455-8498 (outside USA)  
E: proteintech@ptglab.com  
W: ptglab.com

This product is exclusively available under Proteintech Group brand and is not available to purchase from any other manufacturer.

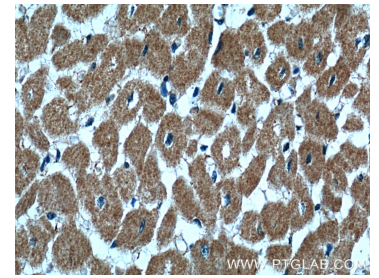
## Selected Validation Data



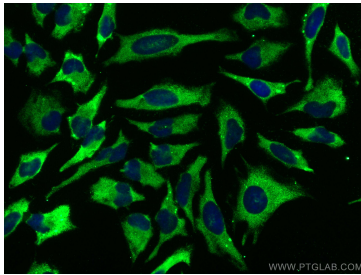
Various lysates were subjected to SDS PAGE followed by western blot with 15743-1-AP (CLPB antibody) at dilution of 1:1000 incubated at room temperature for 1.5 hours.



Immunohistochemical analysis of paraffin-embedded human heart tissue slide using 15743-1-AP (CLPB Antibody) at dilution of 1:200 (under 10x lens).



Immunohistochemical analysis of paraffin-embedded human heart tissue slide using 15743-1-AP (CLPB Antibody) at dilution of 1:200 (under 40x lens).



Immunofluorescent analysis of (-20°C Methanol) fixed HeLa cells using CLPB antibody (15743-1-AP) at dilution of 1:400 and CoraLite®488-Conjugated AffiniPure Goat Anti-Rabbit IgG(H+L).