

For Research Use Only

CRYBA2 Polyclonal antibody

Catalog Number: 15750-1-AP



Basic Information

Catalog Number:

15750-1-AP

Size:

150ul, Concentration: 350 ug/ml by Nanodrop and 200 ug/ml by Bradford method using BSA as the standard;

Source:

Rabbit

Isotype:

IgG

Immunogen Catalog Number:

AG8222

GenBank Accession Number:

BC006285

GeneID (NCBI):

1412

UNIPROT ID:

P53672

Full Name:

crystallin, beta A2

Calculated MW:

197 aa, 22 kDa

Observed MW:

22 kDa

Purification Method:

Antigen affinity purification

Recommended Dilutions:

WB 1:2000-1:12000

Applications

Tested Applications:

WB, ELISA

Species Specificity:

human, mouse, rat

Positive Controls:

WB : mouse eye tissue, rat eye tissue

Background Information

CRYBA2, also named as Beta A2 crystallin, is a member of crystallin superfamily. Mammalian lens crystallins are divided into alpha, beta, and gamma families; beta and gamma crystallins are also defined as a superfamily. Alpha and beta families are further divided into acidic and basic groups. Crystallins are the dominant structural components of the vertebrate eye lens. The MW of this protein is 22 kDa, and this antibody specially recognises the 22 kDa protein.

Storage

Storage:

Store at -20°C. Stable for one year after shipment.

Storage Buffer:

PBS with 0.02% sodium azide and 50% glycerol pH 7.3.

Aliquoting is unnecessary for -20°C storage

*** 20ul sizes contain 0.1% BSA

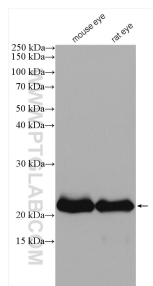
For technical support and original validation data for this product please contact:

T: 1 (888) 4PTGLAB (1-888-478-4522) (toll free in USA), or 1(312) 455-8498 (outside USA)

E: proteintech@ptglab.com
W: ptglab.com

This product is exclusively available under Proteintech Group brand and is not available to purchase from any other manufacturer.

Selected Validation Data



Various lysates were subjected to SDS PAGE followed by western blot with 15750-1-AP (CRYBA2 antibody) at dilution of 1:6000 incubated at room temperature for 1.5 hours.