

For Research Use Only

RPL18A Polyclonal antibody

Catalog Number: 15751-1-AP



Basic Information

Catalog Number: 15751-1-AP	GenBank Accession Number: BC007512	Purification Method: Antigen affinity purification
Size: 150ul , Concentration: 240 µg/ml by Nanodrop and 200 µg/ml by Bradford method using BSA as the standard;	GeneID (NCBI): 6142	Recommended Dilutions: WB 1:500-1:2000 IP 0.5-4.0 ug for IP and 1:500-1:1000 for WB
Source: Rabbit	Full Name: ribosomal protein L18a	IHC 1:20-1:200
Isotype: IgG	Calculated MW: 21 kDa	
Immunogen Catalog Number: AG8251	Observed MW: 21 kDa	

Applications

Tested Applications: IHC, IP, WB, ELISA	Positive Controls: WB : HeLa cells, IP : Jurkat cells, IHC : human brain tissue,
Species Specificity: human, mouse, rat	
Note-IHC: suggested antigen retrieval with TE buffer pH 9.0; (*) Alternatively, antigen retrieval may be performed with citrate buffer pH 6.0	

Background Information

Storage

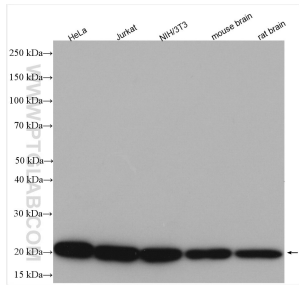
Storage:
Store at -20°C. Stable for one year after shipment.
Storage Buffer:
PBS with 0.02% sodium azide and 50% glycerol pH 7.3.
Aliquoting is unnecessary for -20°C storage

*** 20ul sizes contain 0.1% BSA

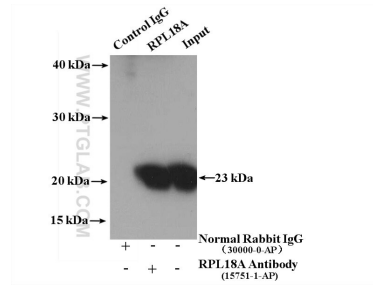
For technical support and original validation data for this product please contact:
T: 1 (888) 4PTGLAB (1-888-478-4522) (toll free in USA), or 1(312) 455-8498 (outside USA)
E: proteintech@ptglab.com
W: ptglab.com

This product is exclusively available under Proteintech Group brand and is not available to purchase from any other manufacturer.

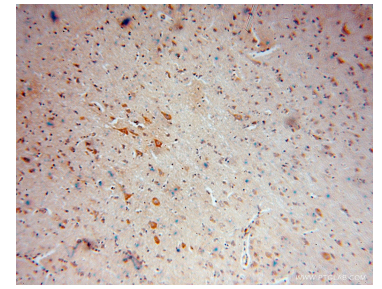
Selected Validation Data



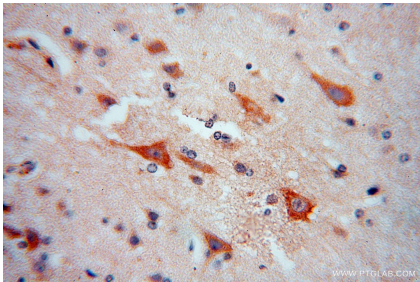
Various lysates were subjected to SDS PAGE followed by western blot with 15751-1-AP (RPL18A antibody) at dilution of 1:1000 incubated at room temperature for 1.5 hours.



IP result of anti-RPL18A (IP:15751-1-AP, 4ug; Detection:15751-1-AP 1:500) with Jurkat cells lysate 3200 ug.



Immunohistochemical analysis of paraffin-embedded human brain using 15751-1-AP (RPL18A antibody) at dilution of 1:100 (under 10x lens).



Immunohistochemical analysis of paraffin-embedded human brain using 15751-1-AP (RPL18A antibody) at dilution of 1:100 (under 40x lens).