

For Research Use Only

LHPP Polyclonal antibody

Catalog Number: 15759-1-AP

Featured Product

16 Publications



Basic Information

Catalog Number:

15759-1-AP

Size:

150ul, Concentration: 900 ug/ml by Nanodrop and 360 ug/ml by Bradford method using BSA as the standard;

Source:

Rabbit

Isotype:

IgG

Immunogen Catalog Number:

AG8375

GenBank Accession Number:

BC007324

GeneID (NCBI):

64077

UNIPROT ID:

Q9H008

Full Name:

phospholysine phosphohistidine inorganic pyrophosphate phosphatase

Calculated MW:

23 kDa, 29 kDa

Observed MW:

23-32 kDa

Purification Method:

Antigen affinity purification

Recommended Dilutions:

WB 1:500-1:3000

IHC 1:50-1:500

IF/ICC 1:10-1:100

Applications

Tested Applications:

WB, IHC, IF/ICC, ELISA

Cited Applications:

WB, IHC, IF

Species Specificity:

human, mouse, rat

Cited Species:

human, mouse

Note-IHC: suggested antigen retrieval with TE buffer pH 9.0; (*) Alternatively, antigen retrieval may be performed with citrate buffer pH 6.0

Positive Controls:

WB: mouse liver tissue, human liver tissue, human brain tissue, A549 cells, HeLa cells, rat liver tissue, A431 cells, HepG2 cells

IHC: human liver cancer tissue, human kidney tissue

IF/ICC: HeLa cells,

Notable Publications

Author	Pubmed ID	Journal	Application
Danfeng Wang	36484014	J Cancer	WB,IHC
Jiangfeng Li	33121495	Mol Cancer	IHC
Kai Guo	36376886	BMC Med Genomics	WB,IHC

Storage

Storage:

Store at -20°C. Stable for one year after shipment.

Storage Buffer:

PBS with 0.02% sodium azide and 50% glycerol pH 7.3.

Aliquoting is unnecessary for -20°C storage

*** 20ul sizes contain 0.1% BSA

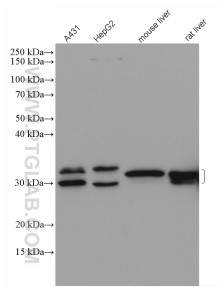
For technical support and original validation data for this product please contact:

T: 1 (888) 4PTGLAB (1-888-478-4522) (toll free in USA), or 1(312) 455-8498 (outside USA)

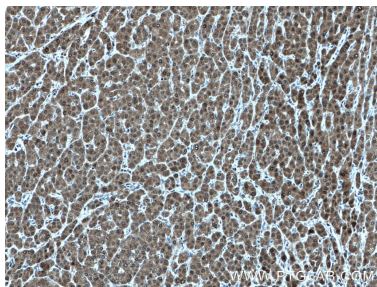
E: proteintech@ptglab.com
W: ptglab.com

This product is exclusively available under Proteintech Group brand and is not available to purchase from any other manufacturer.

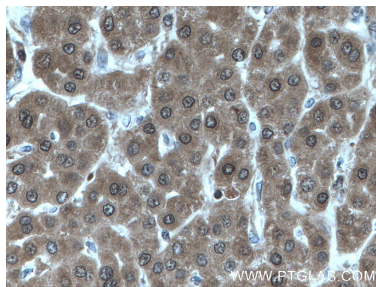
Selected Validation Data



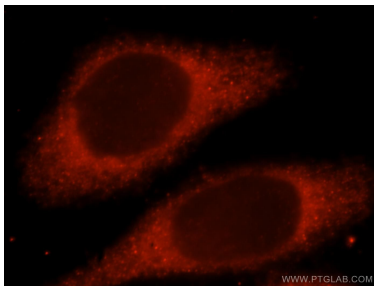
Various lysates were subjected to SDS PAGE followed by western blot with 15759-1-AP (LHPP antibody) at dilution of 1:1500 incubated at room temperature for 1.5 hours.



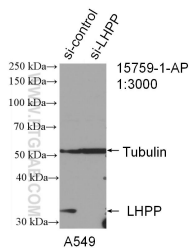
Immunohistochemical analysis of paraffin-embedded human liver cancer tissue slide using 15759-1-AP (LHPP antibody) at dilution of 1:200 (under 10x lens. Heat mediated antigen retrieval with Tris-EDTA buffer (pH 9.0).



Immunohistochemical analysis of paraffin-embedded human liver cancer tissue slide using 15759-1-AP (LHPP antibody) at dilution of 1:200 (under 40x lens. Heat mediated antigen retrieval with Tris-EDTA buffer (pH 9.0).



Immunofluorescent analysis of Hela cells, using LHPP antibody 15759-1-AP at 1:25 dilution and Rhodamine-labeled goat anti-rabbit IgG (red).



WB result of LHPP antibody (15759-1-AP; 1:3000; incubated at room temperature for 1.5 hours) with sh-Control and sh-LHPP transfected A549 cells.