

For Research Use Only

# Neudesin/NENF Polyclonal antibody

Catalog Number: 15760-1-AP



## Basic Information

### Catalog Number:

15760-1-AP

### Size:

150ul , Concentration: 400 ug/ml by Nanodrop;

### Source:

Rabbit

### Isotype:

IgG

### Immunogen Catalog Number:

AG8387

### GenBank Accession Number:

BC008823

### GeneID (NCBI):

29937

### UNIPROT ID:

Q9UMX5

### Full Name:

neuron derived neurotrophic factor

### Calculated MW:

172 aa, 19 kDa

### Observed MW:

19 kDa

### Purification Method:

Antigen affinity purification

### Recommended Dilutions:

WB 1:500-1:2000

## Applications

### Tested Applications:

WB, ELISA

### Species Specificity:

human

### Positive Controls:

WB : HCT 116 cells, HEK-293 cells, HeLa cells, MCF-7 cells

## Background Information

Neudesin neurotrophic factor (NENF, also known as CIR2, SPUF, and SCIRP10) acts as a neurotrophic factor in postnatal mature neurons enhancing neuronal survival, which is localized to mitochondria and endoplasmic reticulum by PINK1 and PARK7 (PMID: 31536960). NENF in the adult brain is expected to play roles in the maintenance and protection of neurons in an autocrine/paracrine manner (PMID: 15605373). It greatly increases cAMP levels in neural precursor cells and might activate a Gs-protein-coupled receptor that could activate the MAPK, PKA, and PI-3K signal pathways (PMID: 16547973).

## Storage

### Storage:

Store at -20°C. Stable for one year after shipment.

### Storage Buffer:

PBS with 0.02% sodium azide and 50% glycerol pH 7.3.

Aliquoting is unnecessary for -20°C storage

\*\*\* 20ul sizes contain 0.1% BSA

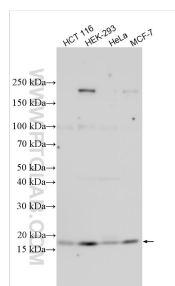
For technical support and original validation data for this product please contact:

T: 1 (888) 4PTGLAB (1-888-478-4522) (toll free in USA), or 1(312) 455-8498 (outside USA)

E: [proteintech@ptglab.com](mailto:proteintech@ptglab.com)  
W: [ptglab.com](http://ptglab.com)

This product is exclusively available under Proteintech Group brand and is not available to purchase from any other manufacturer.

## Selected Validation Data



Various lysates were subjected to SDS PAGE followed by western blot with 15760-1-AP (Neudesin/NENF antibody) at dilution of 1:1000 incubated at room temperature for 1.5 hours.