

For Research Use Only

# SPIB Polyclonal antibody

Catalog Number: 15768-1-AP

2 Publications



## Basic Information

### Catalog Number:

15768-1-AP

### Size:

150ul, Concentration: 350 ug/ml by Nanodrop and 253 ug/ml by Bradford method using BSA as the standard;

### Source:

Rabbit

### Isotype:

IgG

### Immunogen Catalog Number:

AG8404

### GenBank Accession Number:

BC007921

### GeneID (NCBI):

6689

### UNIPROT ID:

Q01892

### Full Name:

Spi-B transcription factor (Spi-1/PU.1 related)

### Calculated MW:

262 aa, 29 kDa

### Observed MW:

29 kDa

### Purification Method:

Antigen affinity purification

### Recommended Dilutions:

WB 1:200-1:1000

IP 0.5-4.0 ug for 1.0-3.0 mg of total protein lysate

IHC 1:50-1:500

## Applications

### Tested Applications:

WB, IP, IHC, ELISA

### Cited Applications:

WB, IHC, ChIP

### Species Specificity:

human

### Cited Species:

human

### Positive Controls:

WB: L02 cells,

IP: L02 cells,

IHC: human liver cancer tissue,

**Note-IHC: suggested antigen retrieval with TE buffer pH 9.0; (\*) Alternatively, antigen retrieval may be performed with citrate buffer pH 6.0**

## Notable Publications

Author	Pubmed ID	Journal	Application
Xunping Zhao	34530056	Cell Signal	WB
Rong Xu	39153969	J Exp Clin Cancer Res	WB, IHC, ChIP

## Storage

### Storage:

Store at -20°C. Stable for one year after shipment.

### Storage Buffer:

PBS with 0.02% sodium azide and 50% glycerol pH 7.3.

Aliquoting is unnecessary for -20°C storage

\*\*\* 20ul sizes contain 0.1% BSA

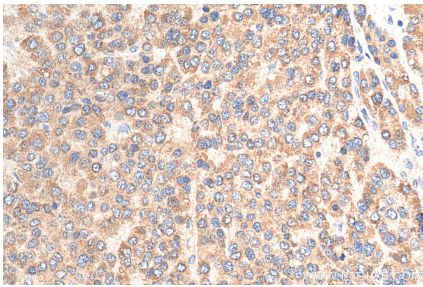
For technical support and original validation data for this product please contact:

T: 1 (888) 4PTGLAB (1-888-478-4522) (toll free in USA), or 1(312) 455-8498 (outside USA)

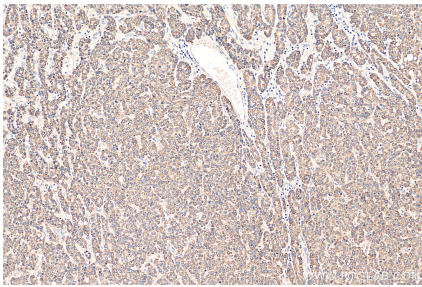
E: [proteintech@ptglab.com](mailto:proteintech@ptglab.com)  
W: [ptglab.com](http://ptglab.com)

This product is exclusively available under Proteintech Group brand and is not available to purchase from any other manufacturer.

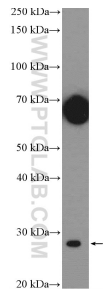
Selected Validation Data



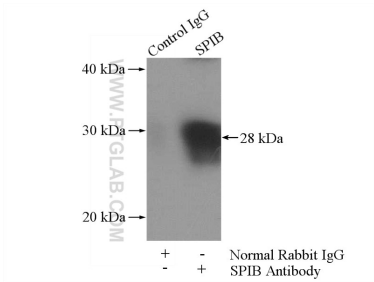
Immunohistochemical analysis of paraffin-embedded human liver cancer tissue slide using 15768-1-AP (SPIB antibody) at dilution of 1:200 (under 40x lens). Heat mediated antigen retrieval with Tris-EDTA buffer (pH 9.0).



Immunohistochemical analysis of paraffin-embedded human liver cancer tissue slide using 15768-1-AP (SPIB antibody) at dilution of 1:200 (under 10x lens). Heat mediated antigen retrieval with Tris-EDTA buffer (pH 9.0).



L02 cells were subjected to SDS PAGE followed by western blot with 15768-1-AP (SPIB Antibody) at dilution of 1:300 incubated at room temperature for 1.5 hours.



IP result of anti-SPIB (IP:15768-1-AP, 4ug; Detection:15768-1-AP 1:300) with L02 cells lysate 1800ug.