

HLA class I (HLA-C) Polyclonal antibody

Catalog Number: 15777-1-AP

1 Publications

Basic Information

Catalog Number:

15777-1-AP

Size:

150ul, Concentration: 350 µg/ml by Nanodrop and 267 µg/ml by Bradford method using BSA as the standard;

Source:

Rabbit

Isotype:

IgG

Immunogen Catalog Number:

AG8461

GenBank Accession Number:

BC007814

GeneID (NCBI):

3107

Full Name:

major histocompatibility complex, class I, C

Calculated MW:

366 aa, 41 kDa

Observed MW:

44 kDa

Purification Method:

Antigen affinity purification

Recommended Dilutions:

WB 1:2000-1:16000

IP 0.5-4.0 µg for IP and 1:500-1:2000 for WB

IHC 1:20-1:200

IF 1:50-1:500

Applications

Tested Applications:

IF, IHC, IP, WB, ELISA

Cited Applications:

WB

Species Specificity:

human

Cited Species:

human

Note-IHC: suggested antigen retrieval with TE buffer pH 9.0; (*) Alternatively, antigen retrieval may be performed with citrate buffer pH 6.0

Positive Controls:

WB: HL-60 cells, HeLa cells, HepG2 cells, Jurkat cells

IP: Jurkat cells,

IHC: human lymphoma tissue,

IF: HeLa cells,

Background Information

Human major histocompatibility complex (MHC) antigens, also referred to as human leukocyte antigens (HLA), are encoded by genes located on the short arm of chromosome 6 (6p21.3). There are two classes of HLA antigens: class I (HLA-A, B and C) and class II (HLA-D). This class I molecules are polymorphic membrane glycoproteins composed of a heavy (alpha) chain (44 kDa) which is encoded by a HLA class I gene (HLA-A, B or C), and β2-microglobulin light (beta) chain (12 kDa). They are involved in the presentation of foreign antigens to the immune system. This polyclonal antibody raised against human HLA-C can also react with HLA-A and HLA-B. (PMID: 667938; 3375250)

Notable Publications

Author	Pubmed ID	Journal	Application
Hong Lv	31018729	J Matern Fetal Neonatal Med	WB

Storage

Storage:

Store at -20°C. Stable for one year after shipment.

Storage Buffer:

PBS with 0.02% sodium azide and 50% glycerol pH 7.3.

Aliquoting is unnecessary for -20°C storage

*** 20ul sizes contain 0.1% BSA

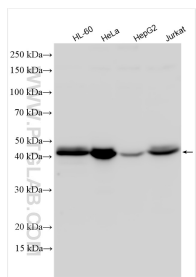
For technical support and original validation data for this product please contact:

T: 1 (888) 4PTGLAB (1-888-478-4522) (toll free in USA), or 1(312) 455-8498 (outside USA)

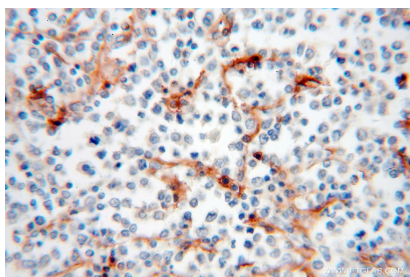
E: proteintech@ptglab.com
W: ptglab.com

This product is exclusively available under Proteintech Group brand and is not available to purchase from any other manufacturer.

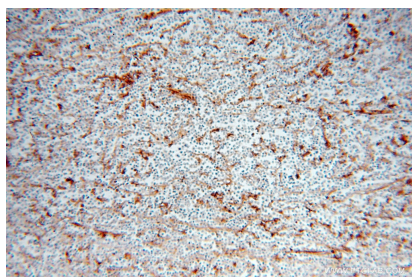
Selected Validation Data



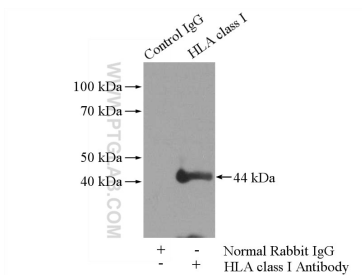
Various lysates were subjected to SDS PAGE followed by western blot with 15777-1-AP (HLA class I (HLA-C) antibody) at dilution of 1:8000 incubated at room temperature for 1.5 hours.



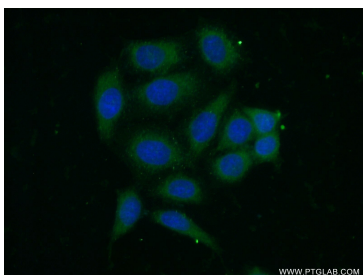
Immunohistochemical analysis of paraffin-embedded human lymphoma using 15777-1-AP (HLA class I (HLA-C) antibody) at dilution of 1:50 (under 40x lens).



Immunohistochemical analysis of paraffin-embedded human lymphoma using 15777-1-AP (HLA class I (HLA-C) antibody) at dilution of 1:50 (under 10x lens).



IP Result of anti-HLA class I (HLA-C) (IP:15777-1-AP, 4ug; Detection:15777-1-AP 1:1000) with Jurkat cells lysate 2400ug.



Immunofluorescent analysis of (-20°C Ethanol) fixed HeLa cells using 15777-1-AP (HLA class I (HLA-C) antibody) at dilution of 1:50 and Alexa Fluor 488-conjugated AffiniPure Goat Anti-Rabbit IgG(H+L).