

For Research Use Only

# TBCB Polyclonal antibody

Catalog Number: 15782-1-AP

1 Publications



## Basic Information

### Catalog Number:

15782-1-AP

### Size:

150ul, Concentration: 600 µg/ml by Nanodrop and 307 µg/ml by Bradford method using BSA as the standard;

### Source:

Rabbit

### Isotype:

IgG

### Immunogen Catalog Number:

AG8473

### GenBank Accession Number:

BC005969

### GeneID (NCBI):

1155

### Full Name:

tubulin folding cofactor B

### Calculated MW:

244 aa, 27 kDa

### Observed MW:

32 kDa

### Purification Method:

Antigen affinity purification

### Recommended Dilutions:

WB 1:1000-1:8000

IP 0.5-4.0 µg for IP and 1:500-1:1000 for WB

IF 1:200-1:800

## Applications

### Tested Applications:

IF, IP, WB, ELISA

### Cited Applications:

IF

### Species Specificity:

human, mouse, rat

### Cited Species:

mouse

### Positive Controls:

WB: A431 cells, HeLa cells, NCI-H1299 cells, Neuro-2a cells, mouse brain tissue, rat brain tissue

IP: HeLa cells,

IF: HeLa cells,

## Background Information

## Notable Publications

Author	Pubmed ID	Journal	Application
Lukas Juergens	32712744	Histochem Cell Biol	IF

## Storage

### Storage:

Store at -20°C. Stable for one year after shipment.

### Storage Buffer:

PBS with 0.02% sodium azide and 50% glycerol pH 7.3.

Aliquoting is unnecessary for -20°C storage

\*\*\* 20ul sizes contain 0.1% BSA

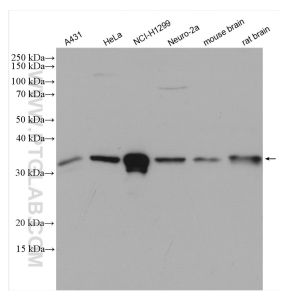
For technical support and original validation data for this product please contact:

T: 1 (888) 4PTGLAB (1-888-478-4522) (toll free in USA), or 1(312) 455-8498 (outside USA)

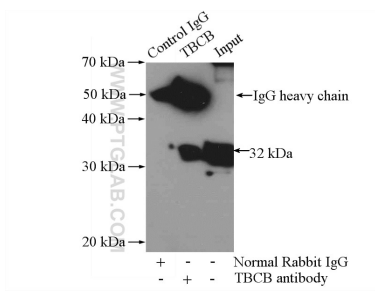
E: [proteintech@ptglab.com](mailto:proteintech@ptglab.com)  
W: [ptglab.com](http://ptglab.com)

This product is exclusively available under Proteintech Group brand and is not available to purchase from any other manufacturer.

## Selected Validation Data



Various lysates were subjected to SDS PAGE followed by western blot with 15782-1-AP (TBCB antibody) at dilution of 1:4000 incubated at room temperature for 1.5 hours.



IP Result of anti-TBCB (IP:15782-1-AP, 3ug; Detection:15782-1-AP 1:500) with HeLa cells lysate 1200ug.



Immunofluorescent analysis of (-20°C Methanol) fixed HeLa cells using TBCB antibody (15782-1-AP) at dilution of 1:400 and CoraLite®488-Conjugated AffiniPure Goat Anti-Rabbit IgG(H+L).