

For Research Use Only

# RBM41 Polyclonal antibody

Catalog Number: 15784-1-AP



## Basic Information

### Catalog Number:

15784-1-AP

### Size:

150ul, Concentration: 240 ug/ml by Nanodrop and 167 ug/ml by Bradford method using BSA as the standard;

### Source:

Rabbit

### Isotype:

IgG

### Immunogen Catalog Number:

AG8483

### GenBank Accession Number:

BC006986

### GeneID (NCBI):

55285

### UNIPROT ID:

Q96LZ5

### Full Name:

RNA binding motif protein 41

### Calculated MW:

413 aa, 47 kDa

### Observed MW:

43-47 kDa

### Purification Method:

Antigen affinity purification

### Recommended Dilutions:

WB 1:500-1:2000

IHC 1:20-1:200

IF/ICC 1:20-1:200

## Applications

### Tested Applications:

WB, IHC, IF/ICC, ELISA

### Species Specificity:

human, mouse, rat

**Note-IHC: suggested antigen retrieval with TE buffer pH 9.0; (\*) Alternatively, antigen retrieval may be performed with citrate buffer pH 6.0**

### Positive Controls:

WB : HeLa cells, A549 cells, SGC-7901 cells, HepG2 cells

IHC : human endometrial cancer tissue,

IF/ICC : HepG2 cells,

## Storage

### Storage:

Store at -20°C. Stable for one year after shipment.

### Storage Buffer:

PBS with 0.02% sodium azide and 50% glycerol pH 7.3.

Aliquoting is unnecessary for -20°C storage

\*\*\* 20ul sizes contain 0.1% BSA

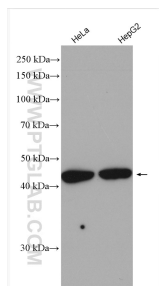
For technical support and original validation data for this product please contact:

T: 1 (888) 4PTGLAB (1-888-478-4522) (toll free in USA), or 1(312) 455-8498 (outside USA)

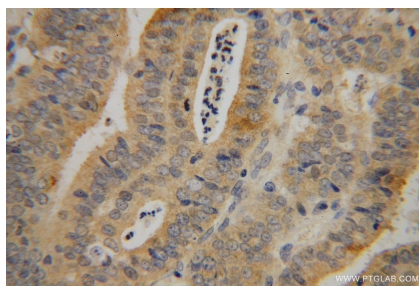
E: [proteintech@ptglab.com](mailto:proteintech@ptglab.com)  
W: [ptglab.com](http://ptglab.com)

This product is exclusively available under Proteintech Group brand and is not available to purchase from any other manufacturer.

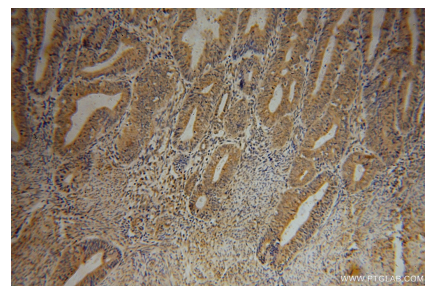
## Selected Validation Data



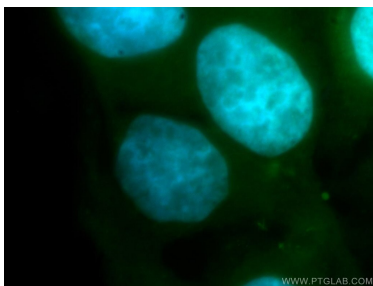
Various lysates were subjected to SDS PAGE followed by western blot with 15784-1-AP (RBM41 antibody) at dilution of 1:1000 incubated at room temperature for 1.5 hours.



Immunohistochemical analysis of paraffin-embedded human endometrial cancer using 15784-1-AP (RBM41 antibody) at dilution of 1:100 (under 40x lens).



Immunohistochemical analysis of paraffin-embedded human endometrial cancer using 15784-1-AP (RBM41 antibody) at dilution of 1:100 (under 10x lens).



Immunofluorescent analysis of HepG2 cells, using RBM41 antibody 15784-1-AP at 1:100 dilution and FITC-labeled donkey anti-rabbit IgG (green). Blue pseudocolor = DAPI (fluorescent DNA dye).