

For Research Use Only

ANAPC10 Polyclonal antibody, PBS Only

Catalog Number: 15788-1-PBS



Basic Information

Catalog Number: 15788-1-PBS	GenBank Accession Number: BC005217	Purification Method: Antigen affinity purification
Size: 100ug , Concentration: 1 mg/ml by Nanodrop;	GeneID (NCBI): 10393	
Source: Rabbit	UNIPROT ID: Q9UM13	
Isotype: IgG	Full Name: anaphase promoting complex subunit 10	
Immunogen Catalog Number: AG8487	Calculated MW: 185 aa, 21 kDa	
	Observed MW: 20 kDa	

Applications

Tested Applications:
WB, IHC, Indirect ELISA

Species Specificity:
human, mouse, rat

Background Information

Anaphase-promoting complex subunit 10 (Anapc10) is a component of the promoting complex/cyclosome (APC/C), a cell cycle-regulated E3 ubiquitin ligase. Anapc10 recognizes ubiquitination-mediated degradation of substrates, and is expressed predominantly in the cytoplasm of spermatogonial and leptoblast cells.

Storage

Storage:
Store at -80°C.

Storage Buffer:
PBS only, pH7.3

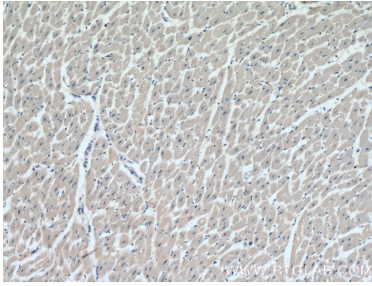
For technical support and original validation data for this product please contact:

T: 1 (888) 4PTGLAB (1-888-478-4522) (toll free in USA), or 1(312) 455-8498 (outside USA)

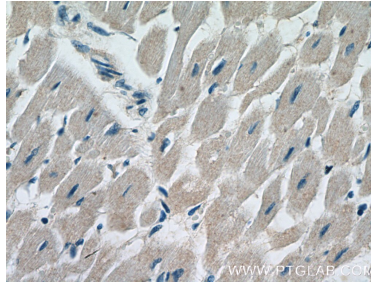
E: proteintech@ptglab.com
W: ptglab.com

This product is exclusively available under Proteintech Group brand and is not available to purchase from any other manufacturer.

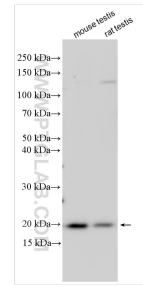
Selected Validation Data



Immunohistochemical analysis of paraffin-embedded human heart tissue slide using 15788-1-AP (ANAPC10 Antibody) at dilution of 1:200 (under 10x lens). This data was developed using the same antibody clone with 15788-1-PBS in a different storage buffer formulation.



Immunohistochemical analysis of paraffin-embedded human heart tissue slide using 15788-1-AP (ANAPC10 Antibody) at dilution of 1:200 (under 40x lens). This data was developed using the same antibody clone with 15788-1-PBS in a different storage buffer formulation.



Various lysates were subjected to SDS PAGE followed by western blot with 15788-1-AP (ANAPC10 antibody) at dilution of 1:800 incubated at room temperature for 1.5 hours. This data was developed using the same antibody clone with 15788-1-PBS in a different storage buffer formulation.