

For Research Use Only

ATF6B Polyclonal antibody

Catalog Number: 15794-1-AP

Featured Product

17 Publications



Basic Information

Catalog Number:

15794-1-AP

Size:

150ul, Concentration: 600 ug/ml by Nanodrop and 400 ug/ml by Bradford method using BSA as the standard;

Source:

Rabbit

Isotype:

IgG

Immunogen Catalog Number:

AG8502

GenBank Accession Number:

BC008394

GeneID (NCBI):

1388

UNIPROT ID:

Q99941

Full Name:

activating transcription factor 6 beta

Calculated MW:

703 aa, 77 kDa

Observed MW:

110 kDa

Purification Method:

Antigen affinity purification

Recommended Dilutions:

WB 1:1000-1:4000

IP 0.5-4.0 ug for 1.0-3.0 mg of total protein lysate

IHC 1:20-1:200

IF/ICC 1:50-1:500

Applications

Tested Applications:

WB, IHC, IF/ICC, IP, ELISA

Cited Applications:

WB, IHC, IF

Species Specificity:

human, mouse, rat

Cited Species:

human, mouse, rat

Note-IHC: suggested antigen retrieval with TE buffer pH 9.0; (*) Alternatively, antigen retrieval may be performed with citrate buffer pH 6.0

Positive Controls:

WB : Jurkat cells, human testis tissue

IP : Jurkat cells,

IHC : human brain tissue,

IF/ICC : HepG2 cells,

Background Information

The endoplasmic reticulum (ER)-transmembrane proteins, ATF6 alpha (ATF6) and ATF6 beta (ATF6B), are cleaved during the ER stress response (ERSR). The resulting N-terminal fragments of both ATF6 isoforms, which have conserved basic leucine-zipper and DNA binding domains but divergent transcriptional activation domains, translocate to the nucleus where they bind to ER stress-response elements (ERSE) in ERSR, such as Bip/GRP78. This antibody could recognize ATF6 beta (110kd) and its cleaved forms(60,80kd)(PMID: 11256944)

Notable Publications

Author	Pubmed ID	Journal	Application
Jia-You Fang	25210813	Proteomics	WB
Chikako Hayashi	36531939	Front Cell Dev Biol	WB,IHC,IF
Francesca Potenza	34830330	Int J Mol Sci	WB

Storage

Storage:

Store at -20°C. Stable for one year after shipment.

Storage Buffer:

PBS with 0.02% sodium azide and 50% glycerol pH 7.3.

Aliquoting is unnecessary for -20°C storage

*** 20ul sizes contain 0.1% BSA

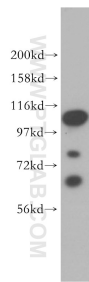
For technical support and original validation data for this product please contact:

T: 1 (888) 4PTGLAB (1-888-478-4522) (toll free in USA), or 1(312) 455-8498 (outside USA)

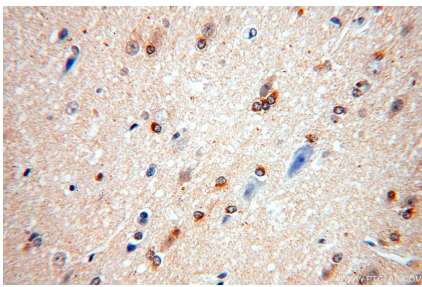
E: proteintech@ptglab.com
W: ptglab.com

This product is exclusively available under Proteintech Group brand and is not available to purchase from any other manufacturer.

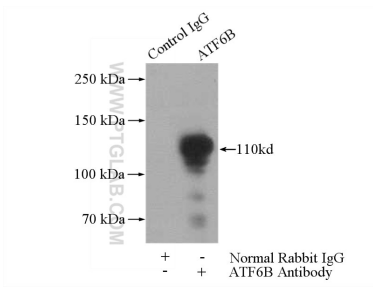
Selected Validation Data



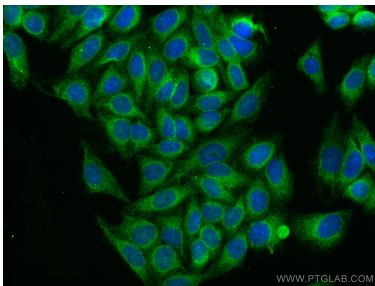
Jurkat cells were subjected to SDS PAGE followed by western blot with 15794-1-AP (ATF6B antibody) at dilution of 1:1000 incubated at room temperature for 1.5 hours.



Immunohistochemical analysis of paraffin-embedded human brain using 15794-1-AP (ATF6B antibody) at dilution of 1:100 (under 40x lens).



IP result of anti-ATF6B (IP:15794-1-AP, 4ug; Detection:15794-1-AP 1:1000) with Jurkat cells lysate 3200ug.



Immunofluorescent analysis of (4% PFA) fixed HepG2 cells using ATF6B antibody (15794-1-AP) at dilution of 1:200 and Coralite®488-Conjugated Goat Anti-Rabbit IgG(H+L) (SA00013-2).