

For Research Use Only

BAP29 Polyclonal antibody, PBS Only

Catalog Number: 15796-1-PBS



Basic Information

Catalog Number:

15796-1-PBS

Size:

100ug, Concentration: 1 mg/ml by
Nanodrop;

Source:

Rabbit

Isotype:

IgG

Immunogen Catalog Number:

AG8505

GenBank Accession Number:

BC008478

GeneID (NCBI):

55973

UNIPROT ID:

Q9UHQ4

Full Name:

B-cell receptor-associated protein 29

Calculated MW:

241 aa, 28 kDa

Observed MW:

28 kDa

Purification Method:

Antigen affinity purification

Applications

Tested Applications:

WB, IHC, IF/ICC, FC (Intra), Indirect ELISA

Species Specificity:

human

Storage

Storage:

Store at -80°C.

Storage Buffer:

PBS Only

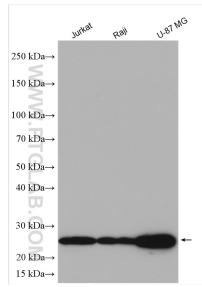
For technical support and original validation data for this product please contact:

T: 1 (888) 4PTGLAB (1-888-478-4522) (toll free
in USA), or 1(312) 455-8498 (outside USA)

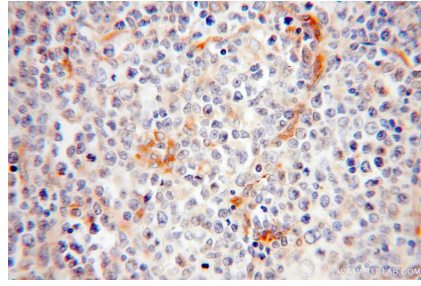
E: proteintech@ptglab.com
W: ptglab.com

This product is exclusively available under Proteintech Group brand and is not available to purchase from any other manufacturer.

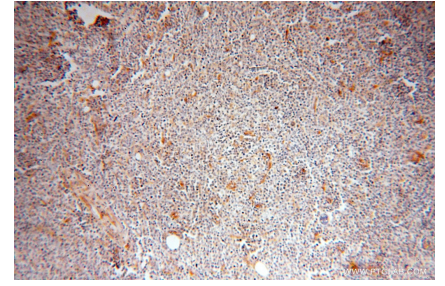
Selected Validation Data



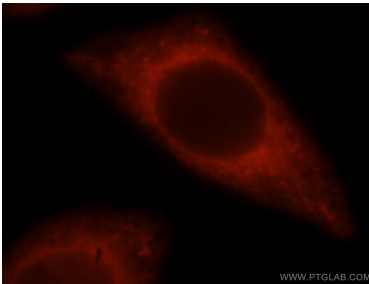
Various lysates were subjected to SDS PAGE followed by western blot with 15796-1-AP (BAP29 antibody) at dilution of 1:4000 incubated at room temperature for 1.5 hours. This data was developed using the same antibody clone with 15796-1-PBS in a different storage buffer formulation.



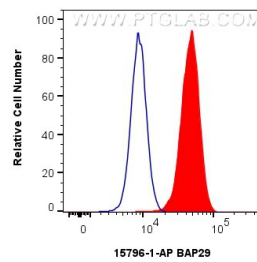
Immunohistochemical analysis of paraffin-embedded human lymphoma using 15796-1-AP (BAP29 antibody) at dilution of 1:200 (under 40x lens). This data was developed using the same antibody clone with 15796-1-PBS in a different storage buffer formulation.



Immunohistochemical analysis of paraffin-embedded human lymphoma using 15796-1-AP (BAP29 antibody) at dilution of 1:200 (under 10x lens). This data was developed using the same antibody clone with 15796-1-PBS in a different storage buffer formulation.



Immunofluorescent analysis of HeLa cells, using BCAP29 antibody 15796-1-AP at 1:25 dilution and Rhodamine-labeled goat anti-rabbit IgG (red). This data was developed using the same antibody clone with 15796-1-PBS in a different storage buffer formulation.



1×10^6 HEK-293 cells were intracellularly stained with 0.5 ug BAP29 Polyclonal antibody (15796-1-AP) and CoraLite® 488-Conjugated Goat Anti-Rabbit IgG(H+L) (SA00013-2)(red), or 0.5 ug Rabbit IgG control Rabbit PolyAb (30000-0-AP) (blue). Cells were fixed with 4% PFA and permeabilized with Flow Cytometry Perm Buffer (PF00011-C). This data was developed using the same antibody clone with 15796-1-PBS in a different storage buffer formulation.