

For Research Use Only

LRCH3 Polyclonal antibody

Catalog Number: 15800-1-AP



Basic Information

Catalog Number:

15800-1-AP

Size:

150ul, Concentration: 850 ug/ml by Nanodrop and 367 ug/ml by Bradford method using BSA as the standard;

Source:

Rabbit

Isotype:

IgG

Immunogen Catalog Number:

AG8511

GenBank Accession Number:

BC007504

GeneID (NCBI):

84859

UNIPROT ID:

Q96118

Full Name:

leucine-rich repeats and calponin homology (CH) domain containing 3

Calculated MW:

86 kDa

Observed MW:

70 kDa

Purification Method:

Antigen affinity purification

Recommended Dilutions:

WB 1:500-1:2400

IP 0.5-4.0 ug for 1.0-3.0 mg of total protein lysate

IF/ICC 1:200-1:800

Applications

Tested Applications:

WB, IF/ICC, IP, ELISA

Species Specificity:

human, mouse, rat

Positive Controls:

WB : human liver tissue, human heart tissue, human spleen tissue, Jurkat cells, mouse lung tissue

IP : mouse liver tissue,

IF/ICC : A431 cells,

Storage

Storage:

Store at -20°C. Stable for one year after shipment.

Storage Buffer:

PBS with 0.02% sodium azide and 50% glycerol pH 7.3.

Aliquoting is unnecessary for -20°C storage

*** 20ul sizes contain 0.1% BSA

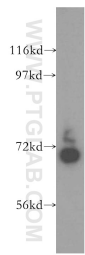
For technical support and original validation data for this product please contact:

T: 1 (888) 4PTGLAB (1-888-478-4522) (toll free in USA), or 1(312) 455-8498 (outside USA)

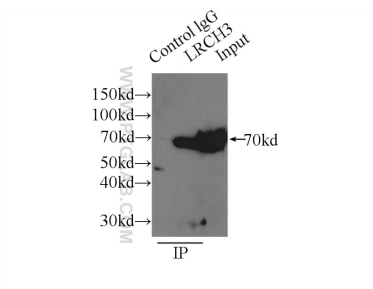
E: proteintech@ptglab.com
W: ptglab.com

This product is exclusively available under Proteintech Group brand and is not available to purchase from any other manufacturer.

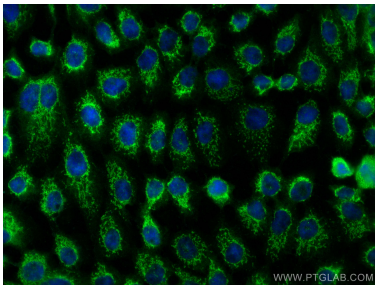
Selected Validation Data



human liver tissue were subjected to SDS PAGE followed by western blot with 15800-1-AP (LRCH3 antibody) at dilution of 1:500 incubated at room temperature for 1.5 hours.



IP result of anti-LRCH3 (IP:15800-1-AP, 3ug; Detection:15800-1-AP 1:1000) with mouse liver tissue lysate 12500ug.



Immunofluorescent analysis of (-20°C Methanol) fixed A431 cells using LRCH3 antibody (15800-1-AP) at dilution of 1:400 and CoraLite®488-Conjugated AffiniPure Goat Anti-Rabbit IgG(H+L).