

For Research Use Only

NHP2L1 Polyclonal antibody

Catalog Number: 15802-1-AP

Featured Product

4 Publications



Basic Information

Catalog Number:

15802-1-AP

Size:

150ul, Concentration: 400 ug/ml by Nanodrop;

Source:

Rabbit

Isotype:

IgG

Immunogen Catalog Number:

AG8532

GenBank Accession Number:

BC005358

GeneID (NCBI):

4809

UNIPROT ID:

P55769

Full Name:

NHP2 non-histone chromosome protein 2-like 1 (S. cerevisiae)

Calculated MW:

128 aa, 14 kDa

Observed MW:

14 kDa

Purification Method:

Antigen affinity purification

Recommended Dilutions:

WB 1:1000-1:8000

IHC 1:20-1:200

IF/ICC 1:50-1:500

Applications

Tested Applications:

WB, IHC, IF/ICC, ELISA

Cited Applications:

WB, IF

Species Specificity:

human, mouse, rat

Cited Species:

human, mouse

Note-IHC: suggested antigen retrieval with TE buffer pH 9.0; (*) Alternatively, antigen retrieval may be performed with citrate buffer pH 6.0

Positive Controls:

WB : HeLa cells, MCF-7 cells, human brain tissue, mouse pancreas tissue, HepG2 cells, Jurkat cells, SH-SY5Y cells, mouse brain tissue, rat brain tissue

IHC : human cervical cancer tissue, mouse brain tissue

IF/ICC : A431 cells,

Background Information

NHP2L1, belongs to the ribosomal protein L7Ae family, is a component of the spliceosome complex. It is recruited to introns following the attachment of U4 and U6 RNAs, and is required for subsequent recruitment of PRP31 and activation of the spliceosomal complex [PMID: 17412961]. It binds to the 5'-stem-loop of U4 snRNA and may have a role in the late stage of spliceosome assembly. The protein undergoes a conformational change upon RNA-binding [PMID: 10545122].

Notable Publications

| Author | Pubmed ID | Journal | Application |
|------------------|-----------|---------------------------------------|-------------|
| Run-Wen Yao | 31540874 | Mol Cell | WB |
| Takaaki Yasuhara | 35662392 | Mol Cell | IF |
| Uchenna Emechebe | 34119693 | Biochim Biophys Acta Proteins Proteom | WB |

Storage

Storage:

Store at -20°C. Stable for one year after shipment.

Storage Buffer:

PBS with 0.02% sodium azide and 50% glycerol pH 7.3.

Aliquoting is unnecessary for -20°C storage

*** 20ul sizes contain 0.1% BSA

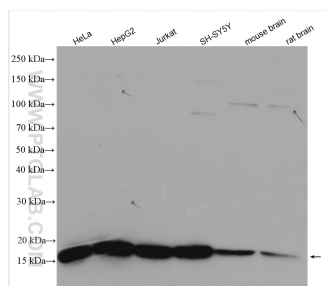
For technical support and original validation data for this product please contact:

T: 1 (888) 4PTGLAB (1-888-478-4522) (toll free in USA), or 1(312) 455-8498 (outside USA)

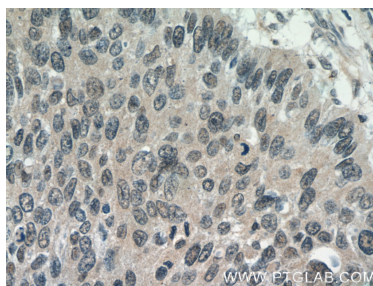
E: proteintech@ptglab.com
W: ptglab.com

This product is exclusively available under Proteintech Group brand and is not available to purchase from any other manufacturer.

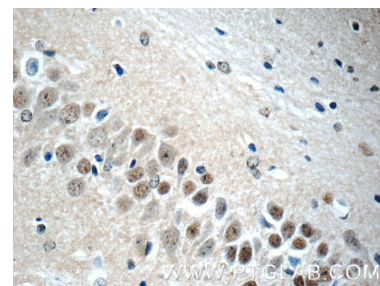
Selected Validation Data



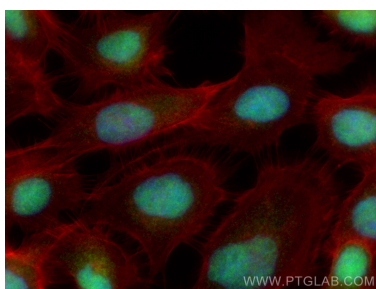
Various lysates were subjected to SDS PAGE followed by western blot with 15802-1-AP (NHP2L1 antibody) at dilution of 1:4000 incubated at room temperature for 1.5 hours.



Immunohistochemical analysis of paraffin-embedded human cervical cancer tissue slide using 15802-1-AP (NHP2L1 Antibody) at dilution of 1:50 (under 40x lens).



Immunohistochemical analysis of paraffin-embedded mouse brain tissue slide using 15802-1-AP (NHP2L1 Antibody) at dilution of 1:50 (under 40x lens).



Immunofluorescent analysis of (4% PFA) fixed A431 cells using NHP2L1 antibody (15802-1-AP) at dilution of 1:200 and CoraLite® 488-Conjugated AffiniPure Goat Anti-Rabbit IgG(H+L), CL594-Phalloidin (red).