

For Research Use Only

# Alpha B Crystallin Polyclonal antibody, PBS Only

Catalog Number: 15808-1-PBS

Featured Product



## Basic Information

**Catalog Number:**

15808-1-PBS

**Size:**

100ug, Concentration: 1 mg/ml by  
Nanodrop;

**Source:**

Rabbit

**Isotype:**

IgG

**Immunogen Catalog Number:**

AG8543

**GenBank Accession Number:**

BC007008

**GeneID (NCBI):**

1410

**UNIPROT ID:**

P02511

**Full Name:**

crystallin, alpha B

**Calculated MW:**

175 aa, 20 kDa

**Observed MW:**

20-22 kDa

**Purification Method:**

Antigen affinity purification

## Applications

**Tested Applications:**

WB, IHC, IF/ICC, IP, Indirect ELISA

**Species Specificity:**

human, mouse, rat

## Background Information

Alpha B-crystallin, encoded by CRYAB gene, is multifunctional, serving as both a major structural protein in the lens and a small heat-shock protein in other tissues in mammals. Alpha B-crystallin may contribute to the transparency and refractive index of the lens. Single nucleotide polymorphisms (SNPs) in the promoter region of CRYAB gene have been associated with in multiple sclerosis. Mutations in the CRYAB gene cause distinct clinical phenotypes including isolated posterior polar cataract, myofibrillar myopathy, cardiomyopathy, or a multisystemic disorder combining all these features. Impairment of alpha-B crystallin dimerization may be relevant to the pathogenesis of these disorders.

## Storage

**Storage:**

Store at -80°C.

**Storage Buffer:**

PBS only, pH7.3

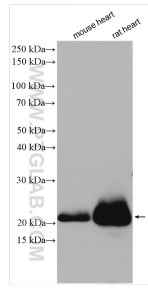
For technical support and original validation data for this product please contact:

T: 1 (888) 4PTGLAB (1-888-478-4522) (toll free  
in USA), or 1(312) 455-8498 (outside USA)

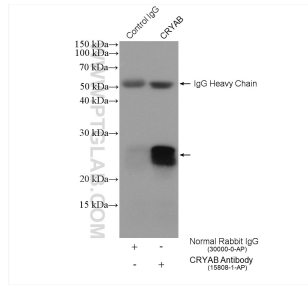
E: [proteintech@ptglab.com](mailto:proteintech@ptglab.com)  
W: [ptglab.com](http://ptglab.com)

**This product is exclusively available under Proteintech Group brand and is not available to purchase from any other manufacturer.**

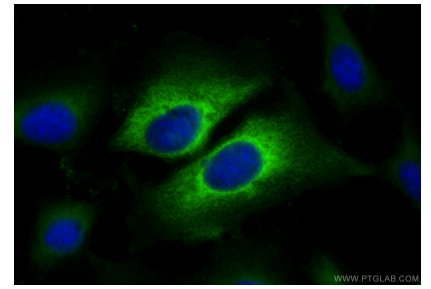
## Selected Validation Data



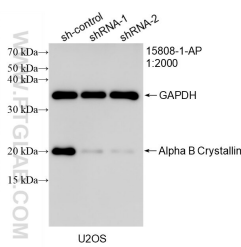
Various lysates were subjected to SDS PAGE followed by western blot with 15808-1-AP (Alpha B Crystallin antibody) at dilution of 1:5000 incubated at room temperature for 1.5 hours. This data was developed using the same antibody clone with 15808-1-PBS in a different storage buffer formulation.



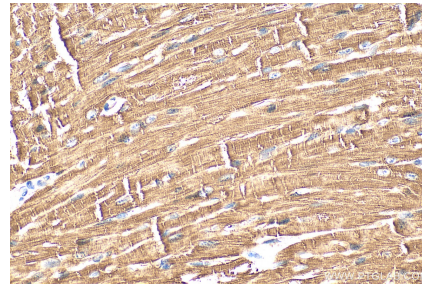
IP result of anti-Alpha B Crystallin (IP:15808-1-AP, 4ug; Detection:15808-1-AP 1:500) with U2OS cells lysate 1800 ug. This data was developed using the same antibody clone with 15808-1-PBS in a different storage buffer formulation.



Immunofluorescent analysis of (-20°C Ethanol) fixed U2OS cells using Alpha B Crystallin antibody (15808-1-AP) at dilution of 1:200 and CoraLite®488-Conjugated Goat Anti-Rabbit IgG(H+L) (SA00013-2). This data was developed using the same antibody clone with 15808-1-PBS in a different storage buffer formulation.



WB result of Alpha B Crystallin antibody (15808-1-AP; 1:2000; incubated at room temperature for 1.5 hours) with sh-Control and sh-Alpha B Crystallin transfected U2OS cells. This data was developed using the same antibody clone with 15808-1-PBS in a different storage buffer formulation.



Immunohistochemical analysis of paraffin-embedded mouse heart tissue slide using 15808-1-AP (Alpha B Crystallin antibody) at dilution of 1:200 (under 40x lens). Heat mediated antigen retrieval with Tris-EDTA buffer (pH 9.0). This data was developed using the same antibody clone with 15808-1-PBS in a different storage buffer formulation.