

For Research Use Only

UBE2O Polyclonal antibody

Catalog Number: 15812-1-AP

Featured Product

4 Publications



Basic Information

Catalog Number: 15812-1-AP	GenBank Accession Number: BC007822	Purification Method: Antigen affinity purification
Size: 150ul , Concentration: 350 µg/ml by Nanodrop and 273 µg/ml by Bradford method using BSA as the standard;	GeneID (NCBI): 63893	Recommended Dilutions: WB 1:500-1:1000 IHC 1:100-1:400
Source: Rabbit	Full Name: ubiquitin-conjugating enzyme E2O	
Isotype: IgG	Calculated MW: 1292 aa, 141 kDa	
Immunogen Catalog Number: AG8580	Observed MW: 150 kDa, 200-230 kDa	

Applications

Tested Applications: IHC, WB, ELISA	Positive Controls: WB : HeLa cells, A431 cells, Jurkat cells
Cited Applications: IF, IHC, WB	IHC : human heart tissue,
Species Specificity: human	
Cited Species: human	

Note-IHC: suggested antigen retrieval with TE buffer pH 9.0; (*) Alternatively, antigen retrieval may be performed with citrate buffer pH 6.0

Background Information

UBE2O, also named as KIAA1734, belongs to the ubiquitin-conjugating enzyme family. It catalyzes the covalent attachment of ubiquitin to other proteins. UBE2O has a calculated molecular mass of 141 kDa, and many bands can be detected as 140-170 kDa and 200-230 kDa (PMID: 28774900, 23455153, 28774922, 11311559).

Notable Publications

Author	Pubmed ID	Journal	Application
Si-Yu Lan	36269535	Curr Med Sci	IHC,WB
Zhan Shi	34790050	Int J Med Sci	IHC,WB
Xu Liu	31907353	Cell Death Dis	WB,IHC,IF

Storage

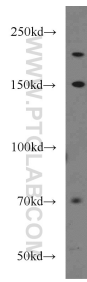
Storage:
Store at -20°C. Stable for one year after shipment.
Storage Buffer:
PBS with 0.02% sodium azide and 50% glycerol pH 7.3.
Aliquoting is unnecessary for -20°C storage

*** 20ul sizes contain 0.1% BSA

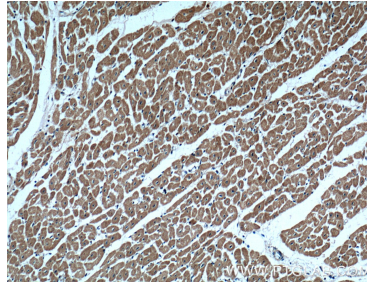
For technical support and original validation data for this product please contact:
T: 1 (888) 4PTGLAB (1-888-478-4522) (toll free in USA), or 1(312) 455-8498 (outside USA)
E: proteintech@ptglab.com
W: ptglab.com

This product is exclusively available under Proteintech Group brand and is not available to purchase from any other manufacturer.

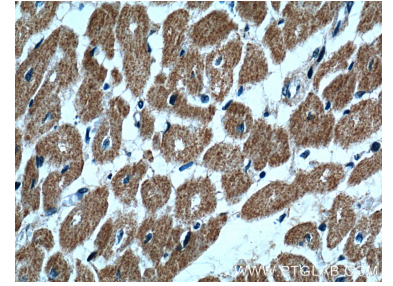
Selected Validation Data



HeLa cells were subjected to SDS PAGE followed by western blot with 15812-1-AP (UBE2O antibody) at dilution of 1:500 incubated at room temperature for 1.5 hours.



Immunohistochemical analysis of paraffin-embedded human heart tissue slide using 15812-1-AP (UBE2O Antibody) at dilution of 1:200 (under 10x lens).



Immunohistochemical analysis of paraffin-embedded human heart tissue slide using 15812-1-AP (UBE2O Antibody) at dilution of 1:200 (under 40x lens).