

For Research Use Only

RFK Polyclonal antibody

Catalog Number: 15813-1-AP **3 Publications**



Basic Information

Catalog Number: 15813-1-AP	GenBank Accession Number: BC007069	Purification Method: Antigen affinity purification
Size: 150ul , Concentration: 300 µg/ml by Nanodrop and 173 µg/ml by Bradford method using BSA as the standard;	GeneID (NCBI): 55312	Recommended Dilutions: WB 1:500-1:2000 IF 1:10-1:100
Source: Rabbit	Full Name: riboflavin kinase	
Isotype: IgG	Calculated MW: 162 aa, 18 kDa	
Immunogen Catalog Number: AG8591	Observed MW: 18 kDa	

Applications

Tested Applications: IF, WB, ELISA	Positive Controls: WB : HeLa cells, Jurkat cells
Cited Applications: WB	IF : HeLa cells,
Species Specificity: human, mouse, rat	
Cited Species: mouse	

Background Information

Riboflavin kinase (RFK) is an essential enzyme that catalyzes the phosphorylation of riboflavin (vitamin B2) to form flavin mononucleotide (FMN), an obligatory step in vitamin B2 utilization and flavin cofactor synthesis (PMID:12623014). RFK is rate-limiting in the synthesis of FAD, an essential prosthetic group of NADPH oxidase.

Notable Publications

Author	Pubmed ID	Journal	Application
Michail S Kukharsky	32467583	Transl Psychiatry	WB
Mengran Zhang	36799538	Adv Sci (Weinh)	WB
Schramm Michael M	24272050	Eur J Immunol	WB

Storage

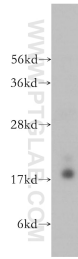
Storage:
Store at -20°C. Stable for one year after shipment.
Storage Buffer:
PBS with 0.02% sodium azide and 50% glycerol pH 7.3.
Aliquoting is unnecessary for -20°C storage

***** 20ul sizes contain 0.1% BSA**

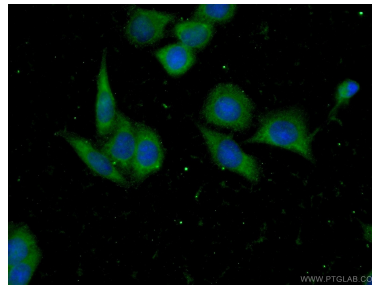
For technical support and original validation data for this product please contact:
T: 1 (888) 4PTGLAB (1-888-478-4522) (toll free in USA), or 1(312) 455-8498 (outside USA)
E: proteintech@ptglab.com
W: ptglab.com

This product is exclusively available under Proteintech Group brand and is not available to purchase from any other manufacturer.

Selected Validation Data



HeLa cells were subjected to SDS PAGE followed by western blot with 15813-1-AP (RFK antibody) at dilution of 1:500 incubated at room temperature for 1.5 hours.



Immunofluorescent analysis of (-20°C Ethanol) fixed HeLa cells using 15813-1-AP (RFK antibody) at dilution of 1:25 and Alexa Fluor 488-conjugated AffiniPure Goat Anti-Rabbit IgG(H+L).