

# MCL1L-Specific Polyclonal antibody

Catalog Number: 15825-1-AP

## Basic Information

**Catalog Number:**

15825-1-AP

**Size:**

150ul , Concentration: 500 ug/ml by Nanodrop and 340 ug/ml by Bradford method using BSA as the standard;

**Source:**

Rabbit

**Isotype:**

IgG

**GenBank Accession Number:**

NM\_182763

**GeneID (NCBI):**

4170

**UNIPROT ID:**

Q07820

**Full Name:**

myeloid cell leukemia sequence 1 (BCL2-related)

**Calculated MW:**

37 kDa

**Purification Method:**

Antigen affinity purification

**Recommended Dilutions:**

IHC 1:20-1:200

## Applications

**Tested Applications:**

IHC, ELISA

**Species Specificity:**

human, mouse, rat

**Note-IHC: suggested antigen retrieval with TE buffer pH 9.0; (\*) Alternatively, antigen retrieval may be performed with citrate buffer pH 6.0**

**Positive Controls:**

**IHC :** human spleen tissue, human brain tissue, human breast cancer tissue, human cervical cancer tissue, human kidney tissue, human lung tissue, human ovary tissue, human placenta tissue, human skin tissue, human testis tissue, human tonsillitis tissue

## Background Information

MCL-1 is an anti-apoptotic member of the Bcl-2 family originally isolated from the ML-1 human myeloid leukemia cell line. Similar to BCL2 and BCL2L1, MCL1 can interact with BAX and/or BAK1 to inhibit mitochondria-mediated apoptosis. Mcl-1 is critical for the proliferation and survival of myeloma cells in vitro, and overexpression of Mcl-1 protein in myeloma cells is associated with relapse and short event-free survival in multiple myeloma patients. Recent studies show that MCL-1 is upregulated in numerous haematological and solid tumour malignancies. Therefore, MCL-1 has been suggested as a potential new therapeutic target. This antibody is specific to MCL1L isoform.

## Storage

**Storage:**

Store at -20°C. Stable for one year after shipment.

**Storage Buffer:**

PBS with 0.02% sodium azide and 50% glycerol pH 7.3.

Aliquoting is unnecessary for -20°C storage

\*\*\* 20ul sizes contain 0.1% BSA

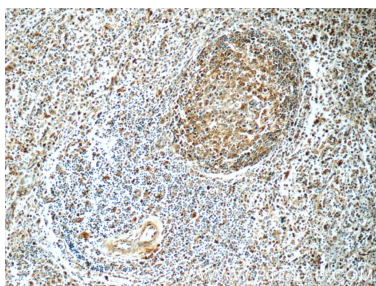
For technical support and original validation data for this product please contact:

T: 1 (888) 4PTGLAB (1-888-478-4522) (toll free in USA), or 1(312) 455-8498 (outside USA)

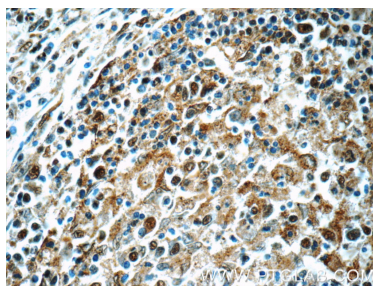
E: [proteintech@ptglab.com](mailto:proteintech@ptglab.com)  
W: [ptglab.com](http://ptglab.com)

This product is exclusively available under Proteintech Group brand and is not available to purchase from any other manufacturer.

## Selected Validation Data



Immunohistochemical analysis of paraffin-embedded human spleen tissue slide using 15825-1-AP (MCL1L-specific antibody at dilution of 1:50 (under 10x lens).



Immunohistochemical analysis of paraffin-embedded human spleen tissue slide using 15825-1-AP (MCL1L-specific antibody at dilution of 1:50 (under 40x lens).