

For Research Use Only

# Carboxypeptidase A1 Polyclonal antibody



Catalog Number: 15836-1-AP

5 Publications

## Basic Information

|  |   |  |
|--|---|--|
| <b>Catalog Number:</b><br>15836-1-AP   | <b>GenBank Accession Number:</b><br>BC005279          | <b>Purification Method:</b><br>Antigen affinity purification       |
| <b>Size:</b><br>150ul , Concentration: 133 µg/ml by Nanodrop and 133 µg/ml by Bradford method using BSA as the standard; | <b>GeneID (NCBI):</b><br>1357                         | <b>Recommended Dilutions:</b><br>WB 1:500-1:2400<br>IHC 1:20-1:200 |
| <b>Source:</b><br>Rabbit   | <b>Full Name:</b><br>carboxypeptidase A1 (pancreatic) |  |
| <b>Isotype:</b><br>IgG   | <b>Calculated MW:</b><br>419 aa, 47 kDa               |  |
| <b>Immunogen Catalog Number:</b><br>AG8586   | <b>Observed MW:</b><br>47 kDa                         |  |

## Applications

**Tested Applications:**  
IHC, WB, ELISA

**Cited Applications:**  
IF, IHC

**Species Specificity:**  
human, mouse, rat

**Cited Species:**  
rat, mouse

**Note-IHC: suggested antigen retrieval with TE buffer pH 9.0; (\*) Alternatively, antigen retrieval may be performed with citrate buffer pH 6.0**

**Positive Controls:**

**WB :** mouse pancreas tissue,

**IHC :** human placenta tissue, human kidney tissue, human liver tissue, human lung tissue, human spleen tissue

## Background Information

CPA1(Carboxypeptidase A1) is also named as CPA and belongs to the the peptidase M14 family. CPA1 is one of the genes whose expression in the pancreas and the protein which it encodes is synthesized as an inactive precursor, proCPA1, which is processed to the active enzyme by the proteolytic removal of the 95-amino acid N-terminal prodomain. The mature CPA1 is not secreted and is trapped and degraded intracellularly(PMID:8639628). This antibody is speicific to CPA1.

## Notable Publications

| Author              | Pubmed ID | Journal        | Application |
|---------------------|-----------|----------------|-------------|
| Uylissa A Rodriguez | 36017799  | Development    | IF          |
| Qiu Tu              | 30910991  | Dis Model Mech | IF          |
| Xintong Jia         | 33483239  | Pancreatology  | IF          |

## Storage

**Storage:**

Store at -20°C. Stable for one year after shipment.

**Storage Buffer:**

PBS with 0.02% sodium azide and 50% glycerol pH 7.3.

Aliquoting is unnecessary for -20°C storage

\*\*\* 20ul sizes contain 0.1% BSA

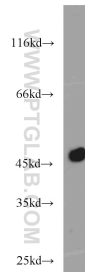
For technical support and original validation data for this product please contact:

T: 1 (888) 4PTGLAB (1-888-478-4522) (toll free in USA), or 1(312) 455-8498 (outside USA)

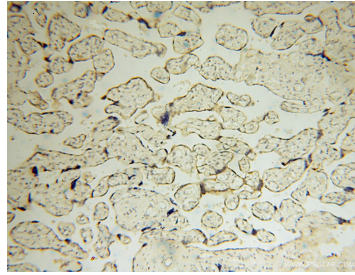
E: proteintech@ptglab.com  
W: ptglab.com

This product is exclusively available under Proteintech Group brand and is not available to purchase from any other manufacturer.

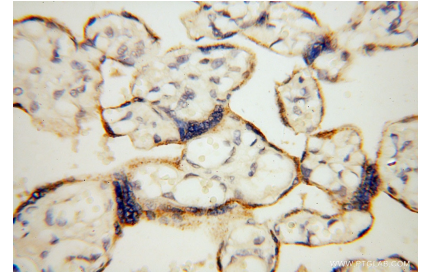
## Selected Validation Data



mouse pancreas tissue were subjected to SDS PAGE followed by western blot with 15836-1-AP (Carboxypeptidase A1 antibody) at dilution of 1:3000 incubated at room temperature for 1.5 hours.



Immunohistochemical analysis of paraffin-embedded human placenta using 15836-1-AP (Carboxypeptidase A1 antibody) at dilution of 1:100 (under 10x lens).



Immunohistochemical analysis of paraffin-embedded human placenta using 15836-1-AP (Carboxypeptidase A1 antibody) at dilution of 1:100 (under 40x lens).