

For Research Use Only

# Carboxypeptidase A1 Polyclonal antibody, PBS Only

Catalog Number: 15836-1-PBS



## Basic Information

### Catalog Number:

15836-1-PBS

### Size:

100ug , Concentration: 1 mg/ml by Nanodrop;

### Source:

Rabbit

### Isotype:

IgG

### Immunogen Catalog Number:

AG8586

### GenBank Accession Number:

BC005279

### GeneID (NCBI):

1357

### UNIPROT ID:

P15085

### Full Name:

carboxypeptidase A1 (pancreatic)

### Calculated MW:

419 aa, 47 kDa

### Observed MW:

47 kDa

### Purification Method:

Antigen affinity purification

## Applications

### Tested Applications:

WB, IHC, IF/ICC, Indirect ELISA

### Species Specificity:

human, mouse, rat

## Background Information

CPA1(Carboxypeptidase A1) is also named as CPA and belongs to the the peptidase M14 family. CPA1 is one of the genes whose expression in the pancreas and the protein which it encodes is synthesized as an inactive precursor, proCPA1, which is processed to the active enzyme by the proteolytic removal of the 95-amino acid N-terminal prodomain. The mature CPA1 is not secreted and is trapped and degraded intracellularly(PMID:8639628). This antibody is sepecific to CPA1.

## Storage

### Storage:

Store at -80°C.

### Storage Buffer:

PBS Only

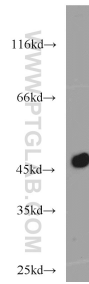
For technical support and original validation data for this product please contact:

T: 1 (888) 4PTGLAB (1-888-478-4522) (toll free in USA), or 1(312) 455-8498 (outside USA)

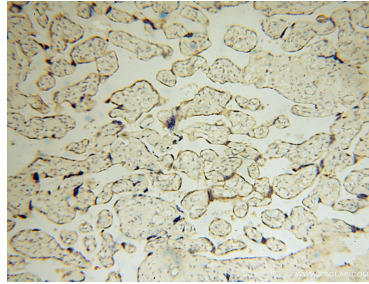
E: [proteintech@ptglab.com](mailto:proteintech@ptglab.com)  
W: [ptglab.com](http://ptglab.com)

This product is exclusively available under Proteintech Group brand and is not available to purchase from any other manufacturer.

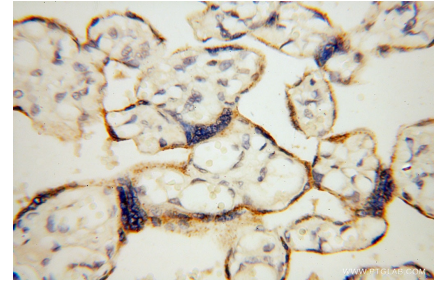
## Selected Validation Data



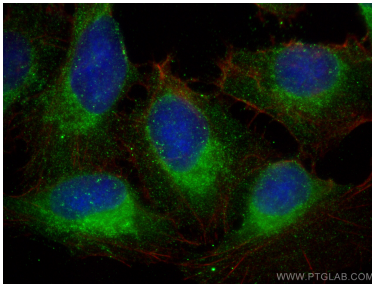
mouse pancreas tissue were subjected to SDS PAGE followed by western blot with 15836-1-AP (Carboxypeptidase A1 antibody) at dilution of 1:3000 incubated at room temperature for 1.5 hours. This data was developed using the same antibody clone with 15836-1-PBS in a different storage buffer formulation.



Immunohistochemical analysis of paraffin-embedded human placenta using 15836-1-AP (Carboxypeptidase A1 antibody) at dilution of 1:100 (under 10x lens). This data was developed using the same antibody clone with 15836-1-PBS in a different storage buffer formulation.



Immunohistochemical analysis of paraffin-embedded human placenta using 15836-1-AP (Carboxypeptidase A1 antibody) at dilution of 1:100 (under 40x lens). This data was developed using the same antibody clone with 15836-1-PBS in a different storage buffer formulation.



Immunofluorescent analysis of (-20°C Ethanol) fixed U2OS cells using Carboxypeptidase A1 antibody (15836-1-AP) at dilution of 1:400 and Multi-rAb CoraLite® Plus 488-Goat Anti-Rabbit Recombinant Secondary Antibody (H+L) (RGAR002), CL594-Phalloidin (red). This data was developed using the same antibody clone with 15836-1-PBS in a different storage buffer formulation.