

For Research Use Only

C4BPB Polyclonal antibody

Catalog Number: 15837-1-AP

2 Publications



Basic Information

Catalog Number:

15837-1-AP

Size:

150ul, Concentration: 450 ug/ml by Nanodrop and 167 ug/ml by Bradford method using BSA as the standard;

Source:

Rabbit

Isotype:

IgG

Immunogen Catalog Number:

AG8587

GenBank Accession Number:

BC005378

GeneID (NCBI):

725

UNIPROT ID:

P20851

Full Name:

complement component 4 binding protein, beta

Calculated MW:

251 aa, 28 kDa

Observed MW:

45 kDa

Purification Method:

Antigen affinity purification

Recommended Dilutions:

WB 1:500-1:1000

IHC 1:50-1:500

IF/ICC 1:50-1:500

Applications

Tested Applications:

WB, IHC, IF/ICC, ELISA

Cited Applications:

WB

Species Specificity:

human, mouse

Cited Species:

human

Note-IHC: suggested antigen retrieval with TE buffer pH 9.0; (*) Alternatively, antigen retrieval may be performed with citrate buffer pH 6.0

Positive Controls:

WB: human plasma tissue, HeLa cells, mouse ovary tissue

IHC: human liver tissue,

IF/ICC: HepG2 cells,

Background Information

C4b-binding protein (C4BP) is a large oligomeric glycoprotein, present in plasma at a concentration of approximately 200 mg/L (PMID: 24218259). It is the main inhibitor of the classical complement and lectin pathway. C4BP is composed of two polypeptides (alpha and beta chains), which have molecular weights of 70 and 45 kDa, respectively (PMID: 7561113). This polyclonal antibody is raised against the C4BP beta chain (C4BPB).

Notable Publications

Author	Pubmed ID	Journal	Application
Ping Zhao	30841875	BMC Cancer	WB
Wei Dong	36471393	World J Surg Oncol	WB

Storage

Storage:

Store at -20°C. Stable for one year after shipment.

Storage Buffer:

PBS with 0.02% sodium azide and 50% glycerol pH 7.3.

Aliquoting is unnecessary for -20°C storage

*** 20ul sizes contain 0.1% BSA

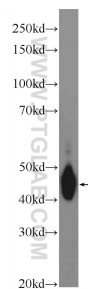
For technical support and original validation data for this product please contact:

T: 1 (888) 4PTGLAB (1-888-478-4522) (toll free in USA), or 1(312) 455-8498 (outside USA)

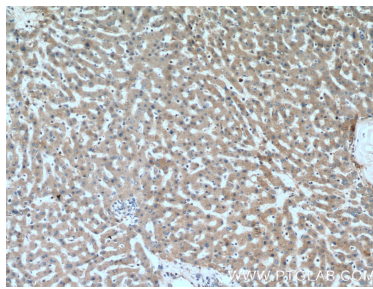
E: proteintech@ptglab.com
W: ptglab.com

This product is exclusively available under Proteintech Group brand and is not available to purchase from any other manufacturer.

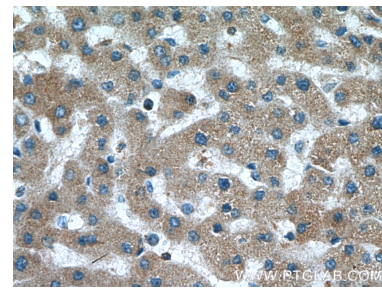
Selected Validation Data



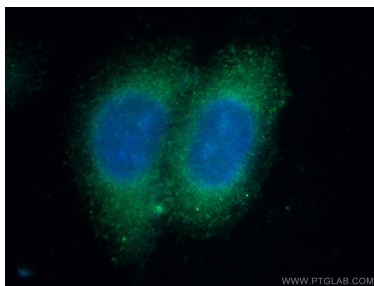
human plasma were subjected to SDS PAGE followed by western blot with 15837-1-AP (C4BPB Antibody) at dilution of 1:600 incubated at 4 degree celsius over night.



Immunohistochemical analysis of paraffin-embedded human liver tissue slide using 15837-1-AP (C4BPB Antibody) at dilution of 1:200 (under 10x lens).



Immunohistochemical analysis of paraffin-embedded human liver tissue slide using 15837-1-AP (C4BPB Antibody) at dilution of 1:200 (under 40x lens).



Immunofluorescent analysis of (-20°C Ethanol) fixed HepG2 cells using 15837-1-AP (C4BPB antibody) at dilution of 1:50 and Alexa Fluor 488-conjugated Goat Anti-Rabbit IgG(H+L).