

For Research Use Only

# PSMC6 Polyclonal antibody

Catalog Number: 15839-1-AP

4 Publications



## Basic Information

<b>Catalog Number:</b> 15839-1-AP	<b>GenBank Accession Number:</b> BC005390	<b>Purification Method:</b> Antigen affinity purification
<b>Size:</b> 150ul , Concentration: 500 ug/ml by Nanodrop and 333 ug/ml by Bradford method using BSA as the standard;	<b>GeneID (NCBI):</b> 5706	<b>Recommended Dilutions:</b> WB 1:1000-1:8000 IHC 1:250-1:1000
<b>Source:</b> Rabbit	<b>UNIPROT ID:</b> P62333	
<b>Isotype:</b> IgG	<b>Full Name:</b> proteasome (prosome, macropain) 26S subunit, ATPase, 6	
<b>Immunogen Catalog Number:</b> AG8589	<b>Calculated MW:</b> 389 aa, 44 kDa	
	<b>Observed MW:</b> 42 kDa	

## Applications

### Tested Applications:

WB, IHC, ELISA

### Cited Applications:

WB, IHC

### Species Specificity:

human, mouse, rat

### Cited Species:

rat, mouse

**Note-IHC: suggested antigen retrieval with TE buffer pH 9.0; (\*) Alternatively, antigen retrieval may be performed with citrate buffer pH 6.0**

### Positive Controls:

**WB:** mouse brain tissue, human brain tissue, human testis tissue, rat liver tissue, mouse liver tissue, rat brain tissue

**IHC:** human liver cancer tissue, mouse brain tissue

## Background Information

PSMC6 (proteasome (prosome, macropain) 26S subunit, ATPase, 6) is also named as CADP44, MGC12520, P44, SUG2, p42 and belongs to the AAA ATPase family. It is a component of the 26S protease, which is involved in the ATP-dependent degradation of ubiquitinated proteins. The regulatory (or ATPase) complex confers ATP dependency and substrate specificity to the 26S complex. The gene encodes a 44 kDa PSMC6.

## Notable Publications

Author	Pubmed ID	Journal	Application
Yi-Chao Lee	30404641	J Biomed Sci	WB
Kuixiang Chen	29435775	Cardiovasc Drugs Ther	WB
Yanting Yu	33864412	FASEB J	IHC

## Storage

### Storage:

Store at -20°C. Stable for one year after shipment.

### Storage Buffer:

PBS with 0.02% sodium azide and 50% glycerol pH 7.3.

Aliquoting is unnecessary for -20°C storage

\*\*\* 20ul sizes contain 0.1% BSA

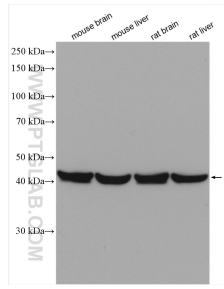
For technical support and original validation data for this product please contact:

T: 1 (888) 4PTGLAB (1-888-478-4522) (toll free in USA), or 1(312) 455-8498 (outside USA)

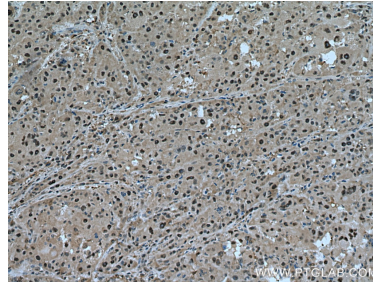
E: proteintech@ptglab.com  
W: ptglab.com

This product is exclusively available under Proteintech Group brand and is not available to purchase from any other manufacturer.

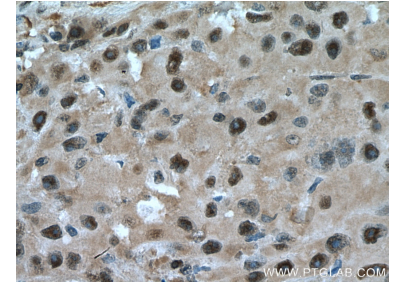
## Selected Validation Data



Various lysates were subjected to SDS PAGE followed by western blot with 15839-1-AP (PSMC6 antibody) at dilution of 1:4000 incubated at room temperature for 1.5 hours.



Immunohistochemical analysis of paraffin-embedded human liver cancer tissue slide using 15839-1-AP (PSMC6 antibody) at dilution of 1:500 (under 10x lens). Heat mediated antigen retrieval with Tris-EDTA buffer (pH 9.0).



Immunohistochemical analysis of paraffin-embedded human liver cancer tissue slide using 15839-1-AP (PSMC6 antibody) at dilution of 1:500 (under 40x lens). Heat mediated antigen retrieval with Tris-EDTA buffer (pH 9.0).