

For Research Use Only

ATP5J2 Polyclonal antibody, PBS Only

Catalog Number: 15842-1-PBS



Basic Information

Catalog Number:

15842-1-PBS

Size:

100ug, Concentration: 1 mg/ml by Nanodrop;

Source:

Rabbit

Isotype:

IgG

Immunogen Catalog Number:

AG8598

GenBank Accession Number:

BC003678

GeneID (NCBI):

9551

UNIPROT ID:

P56134

Full Name:

ATP synthase, H⁺ transporting, mitochondrial F₀ complex, subunit F₂

Calculated MW:

5-11 kDa

Observed MW:

11kDa

Purification Method:

Antigen affinity purification

Applications

Tested Applications:

WB, IF/ICC, Indirect ELISA

Species Specificity:

human, mouse, rat

Background Information

ATP5J2 (also known as ATP synthase-coupling factor 6, or CF6) is a nuclear-encoded subunit of mitochondrial ATP synthase (Complex V), the enzyme responsible for synthesizing ATP from ADP and inorganic phosphate (Pi) during oxidative phosphorylation (OXPHOS).

Storage

Storage:

Store at -80°C.

Storage Buffer:

PBS only, pH7.3

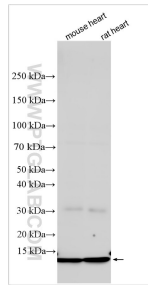
For technical support and original validation data for this product please contact:

T: 1 (888) 4PTGLAB (1-888-478-4522) (toll free in USA), or 1(312) 455-8498 (outside USA)

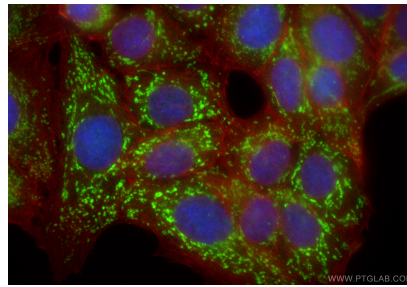
E: proteintech@ptglab.com
W: ptglab.com

This product is exclusively available under Proteintech Group brand and is not available to purchase from any other manufacturer.

Selected Validation Data



Various lysates were subjected to SDS PAGE followed by western blot with 15842-1-AP (ATP5J2 antibody) at dilution of 1:10000 incubated at room temperature for 1.5 hours. This data was developed using the same antibody clone with 15842-1-PBS in a different storage buffer formulation.



Immunofluorescent analysis of (4% PFA) fixed MCF-7 cells using ATP5J2 antibody (15842-1-AP) at dilution of 1:400 and CoraLite@488-Conjugated Goat Anti-Rabbit IgG(H+L) (SA00013-2), CL594-Phalloidin (red). This data was developed using the same antibody clone with 15842-1-PBS in a different storage buffer formulation.