

For Research Use Only

PLA2G1B Polyclonal antibody

Catalog Number: 15843-1-AP

1 Publications



Basic Information

Catalog Number:

15843-1-AP

Size:

150ul, Concentration: 500 ug/ml by Nanodrop and 333 ug/ml by Bradford method using BSA as the standard;

Source:

Rabbit

Isotype:

IgG

Immunogen Catalog Number:

AG8603

GenBank Accession Number:

BC005386

GeneID (NCBI):

5319

UNIPROT ID:

P04054

Full Name:

phospholipase A2, group IB (pancreas)

Calculated MW:

70aa, 8 kDa; 148aa, 16 kDa

Observed MW:

13-16 kDa

Purification Method:

Antigen affinity purification

Recommended Dilutions:

WB 1:1000-1:6000

IHC 1:200-1:800

IF-P 1:50-1:500

Applications

Tested Applications:

WB, IHC, IF-P, ELISA

Cited Applications:

WB

Species Specificity:

human, mouse

Cited Species:

mouse

Note-IHC: suggested antigen retrieval with TE buffer pH 9.0; (*) Alternatively, antigen retrieval may be performed with citrate buffer pH 6.0

Positive Controls:

WB : mouse pancreas tissue, mouse spleen tissue, rat pancreas tissue, pig pancreas tissue

IHC : human pancreas cancer tissue,

IF-P : mouse pancreas tissue,

Background Information

PLA2G1B is a secreted member of the phospholipase A2 (PLA2) class of enzymes, which is produced by the pancreatic acinar cells. PLA2G1B catalyzes the hydrolysis of the sn-2 position of membrane glycerophospholipids to release arachidonic acid (AA) and lysophospholipids.

Notable Publications

Author	Pubmed ID	Journal	Application
Teng Wei	39232272	Food Chem	WB

Storage

Storage:

Store at -20°C. Stable for one year after shipment.

Storage Buffer:

PBS with 0.02% sodium azide and 50% glycerol pH 7.3.

Aliquoting is unnecessary for -20°C storage

*** 20ul sizes contain 0.1% BSA

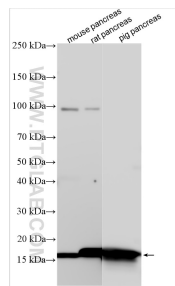
For technical support and original validation data for this product please contact:

T: 1 (888) 4PTGLAB (1-888-478-4522) (toll free in USA), or 1(312) 455-8498 (outside USA)

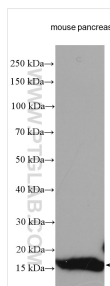
E: proteintech@ptglab.com
W: ptglab.com

This product is exclusively available under Proteintech Group brand and is not available to purchase from any other manufacturer.

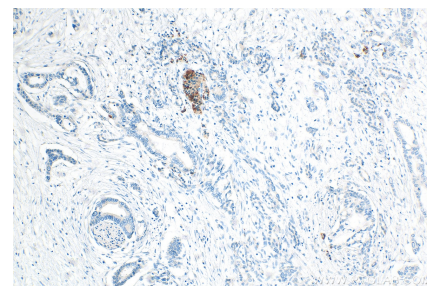
Selected Validation Data



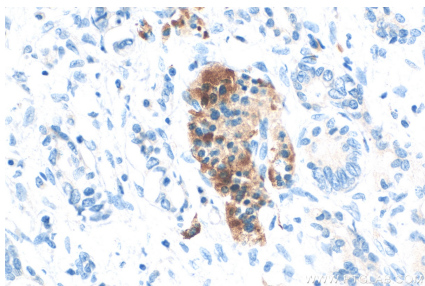
Various lysates were subjected to SDS PAGE followed by western blot with 15843-1-AP (PLA2G1B antibody) at dilution of 1:3000 incubated at room temperature for 1.5 hours.



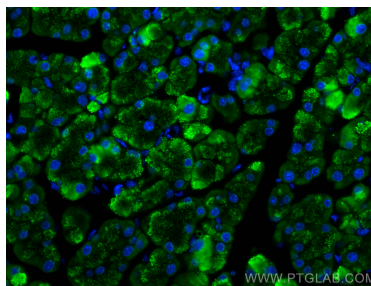
mouse pancreas tissue were subjected to SDS PAGE followed by western blot with 15843-1-AP (PLA2G1B antibody) at dilution of 1:600 incubated at room temperature for 1.5 hours.



Immunohistochemical analysis of paraffin-embedded human pancreas cancer tissue slide using 15843-1-AP (PLA2G1B antibody) at dilution of 1:400 (under 10x lens). Heat mediated antigen retrieval with Tris-EDTA buffer (pH 9.0).



Immunohistochemical analysis of paraffin-embedded human pancreas cancer tissue slide using 15843-1-AP (PLA2G1B antibody) at dilution of 1:400 (under 40x lens). Heat mediated antigen retrieval with Tris-EDTA buffer (pH 9.0).



Immunofluorescent analysis of (4% PFA) fixed paraffin-embedded mouse pancreas tissue using PLA2G1B antibody (15843-1-AP) at dilution of 1:200 and CoraLite® 488-Conjugated AffiniPure Goat Anti-Rabbit IgG(H+L) (SA00013-2). Heat mediated antigen retrieval with Tris-EDTA buffer (pH 9.0).