

For Research Use Only

REG Polyclonal antibody

Catalog Number: 15850-1-AP

2 Publications



Basic Information

Catalog Number:

15850-1-AP

Size:

150ul, Concentration: 233 ug/ml by Bradford method using BSA as the standard;

Source:

Rabbit

Isotype:

IgG

Immunogen Catalog Number:

AG8640

GenBank Accession Number:

BC005350

GeneID (NCBI):

5967

UNIPROT ID:

P05451

Full Name:

regenerating islet-derived 1 alpha

Calculated MW:

166 aa, 19 kDa

Observed MW:

19 kDa

Purification Method:

Antigen affinity purification

Recommended Dilutions:

WB 1:1000-1:6000

IHC 1:400-1:1600

Applications

Tested Applications:

WB, IHC, ELISA

Cited Applications:

WB, IF

Species Specificity:

human, mouse, rat

Cited Species:

human, mouse

Note-IHC: suggested antigen retrieval with TE buffer pH 9.0; (*) Alternatively, antigen retrieval may be performed with citrate buffer pH 6.0

Positive Controls:

WB : mouse pancreas tissue, rat pancreas tissue

IHC : human stomach cancer tissue, human pancreas cancer tissue

Notable Publications

Author	Pubmed ID	Journal	Application
Hongli Mao	33513463	Int Immunopharmacol	WB
Ze-Hua Xu	37531162	Ann N Y Acad Sci	WB,IF

Storage

Storage:

Store at -20°C. Stable for one year after shipment.

Storage Buffer:

PBS with 0.02% sodium azide and 50% glycerol pH 7.3.

Aliquoting is unnecessary for -20°C storage

*** 20ul sizes contain 0.1% BSA

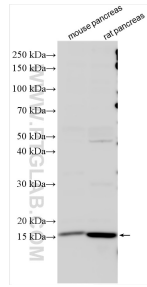
For technical support and original validation data for this product please contact:

T: 1 (888) 4PTGLAB (1-888-478-4522) (toll free in USA), or 1(312) 455-8498 (outside USA)

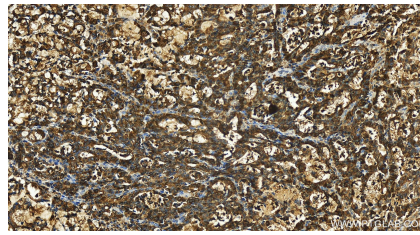
E: proteintech@ptglab.com
W: ptglab.com

This product is exclusively available under Proteintech Group brand and is not available to purchase from any other manufacturer.

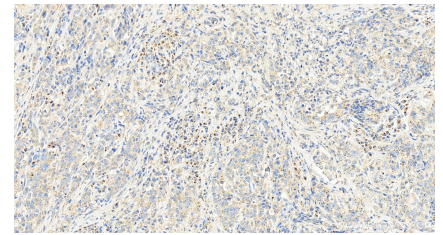
Selected Validation Data



Various lysates were subjected to SDS PAGE followed by western blot with 15850-1-AP (REG antibody) at dilution of 1:3000 incubated at room temperature for 1.5 hours.



Immunohistochemical analysis of paraffin-embedded human stomach cancer slide using 15850-1-AP (REG antibody) at dilution of 1:800 (under 20x lens). Heat mediated antigen retrieval with Tris-EDTA buffer (pH 9.0).



Immunohistochemical analysis of paraffin-embedded human stomach cancer tissue slide using 15850-1-AP (REG antibody) at dilution of 1:200 (under 20x lens). Heat mediated antigen retrieval with Tris-EDTA buffer (pH 9.0).