

For Research Use Only

INTS11 Polyclonal antibody

Catalog Number: 15860-1-AP

Featured Product

1 Publications



Basic Information

Catalog Number:

15860-1-AP

Size:

150ul, Concentration: 150 ug/ml by Nanodrop and 133 ug/ml by Bradford method using BSA as the standard;

Source:

Rabbit

Isotype:

IgG

Immunogen Catalog Number:

AG8365

GenBank Accession Number:

BC007978

GeneID (NCBI):

54973

UNIPROT ID:

Q5TA45

Full Name:

cleavage and polyadenylation specific factor 3-like

Calculated MW:

600 aa, 68 kDa

Observed MW:

68 kDa

Purification Method:

Antigen affinity purification

Recommended Dilutions:

WB 1:200-1:1000

IF/ICC 1:20-1:200

Applications

Tested Applications:

WB, IF/ICC, ELISA

Cited Applications:

WB

Species Specificity:

human, mouse

Cited Species:

human

Positive Controls:

WB : mouse colon tissue, mouse spleen tissue

IF/ICC : HepG2 cells,

Background Information

Integrator complex subunit 11 (INT11) is a protein that in humans is encoded by the INTS11 gene. INTS11, also known as Cleavage and Polyadenylation Specific Factor 3-Like (CPSF3L), contains a metallo- β -lactamase and β -CASP domain that, together, coordinate two zinc ions within the active site to promote its RNA endonuclease activity. INTS11 is the catalytic subunit of the Integrator (INT) complex, which is crucial for the biogenesis of small nuclear RNAs and enhancer RNAs. INT11 has 5 isoforms with the molecular mass of 56 and 65-68 kDa (PMID: 34516911, PMID: 37054711).

Notable Publications

Author	Pubmed ID	Journal	Application
Xiaoxia Tong	39027882	Open Med (Wars)	WB

Storage

Storage:

Store at -20°C. Stable for one year after shipment.

Storage Buffer:

PBS with 0.02% sodium azide and 50% glycerol pH 7.3.

Aliquoting is unnecessary for -20°C storage

*** 20ul sizes contain 0.1% BSA

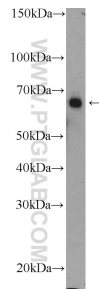
For technical support and original validation data for this product please contact:

T: 1 (888) 4PTGLAB (1-888-478-4522) (toll free in USA), or 1(312) 455-8498 (outside USA)

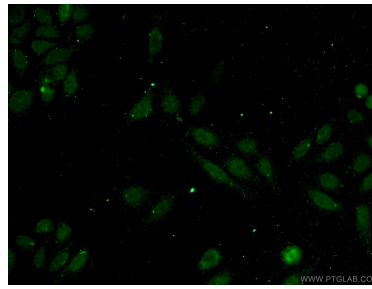
E: proteintech@ptglab.com
W: ptglab.com

This product is exclusively available under Proteintech Group brand and is not available to purchase from any other manufacturer.

Selected Validation Data



mouse colon tissue were subjected to SDS PAGE followed by western blot with 15860-1-AP (INTS11 Antibody) at dilution of 1:300 incubated at room temperature for 1.5 hours.



Immunofluorescent analysis of HepG2 cells using 15860-1-AP (INTS11 antibody) at dilution of 1:50 and Alexa Fluor 488-conjugated AffiniPure Goat Anti-Rabbit IgG(H+L).