

For Research Use Only

HLA-DRB1 Polyclonal antibody

Catalog Number: 15862-1-AP **4 Publications**



Basic Information

Catalog Number: 15862-1-AP	GenBank Accession Number: BC007920	Purification Method: Antigen affinity purification
Size: 150ul, Concentration: 600 ug/ml by Nanodrop and 353 ug/ml by Bradford method using BSA as the standard;	GeneID (NCBI): 3123	Recommended Dilutions: WB 1:500-1:2000 IP 0.5-4.0 ug for 1.0-3.0 mg of total protein lysate IHC 1:50-1:500 IF/ICC 1:200-1:800
Source: Rabbit	UNIPROT ID: P01911	
Isotype: IgG	Full Name: major histocompatibility complex, class II, DR beta 1	
Immunogen Catalog Number: AG8405	Calculated MW: 266 aa, 30 kDa	
	Observed MW: 27-30 kDa	

Applications

Tested Applications: WB, IHC, IF/ICC, IP, ELISA	Positive Controls: WB : Raji cells, human spleen tissue, A375 cells, Daudi cells IP : Raji cells, IHC : human tonsillitis tissue, IF/ICC : Raji cells,
Cited Applications: WB, IHC	
Species Specificity: human	
Cited Species: human, mouse	

Note-IHC: suggested antigen retrieval with TE buffer pH 9.0; (*) Alternatively, antigen retrieval may be performed with citrate buffer pH 6.0

Notable Publications

Author	Pubmed ID	Journal	Application
Rupert L Mayer	36241641	Nat Commun	WB
Qian Gao	36578425	Heliyon	WB
Yanling Wang	38694916	Front Pharmacol	IHC

Storage

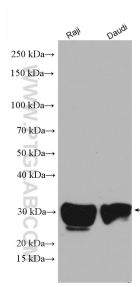
Storage:
Store at -20°C. Stable for one year after shipment.
Storage Buffer:
PBS with 0.02% sodium azide and 50% glycerol pH 7.3.
Aliquoting is unnecessary for -20°C storage

*** 20ul sizes contain 0.1% BSA

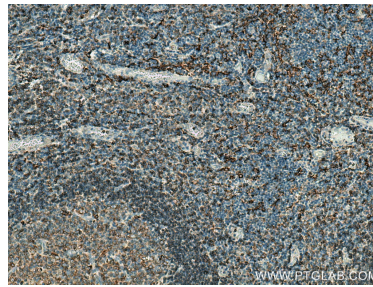
For technical support and original validation data for this product please contact:
T: 1 (888) 4PTGLAB (1-888-478-4522) (toll free in USA), or 1(312) 455-8498 (outside USA)
E: proteintech@ptglab.com
W: ptglab.com

This product is exclusively available under Proteintech Group brand and is not available to purchase from any other manufacturer.

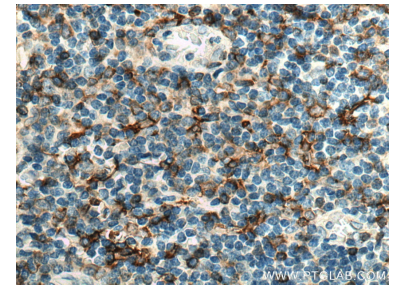
Selected Validation Data



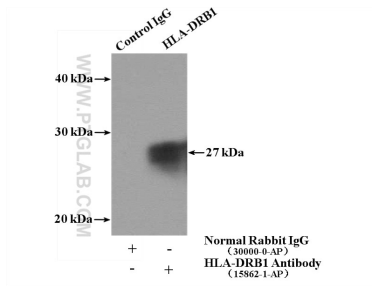
Various lysates were subjected to SDS PAGE followed by western blot with 15862-1-AP (HLA-DRB1 antibody) at dilution of 1:1000 incubated at room temperature for 1.5 hours.



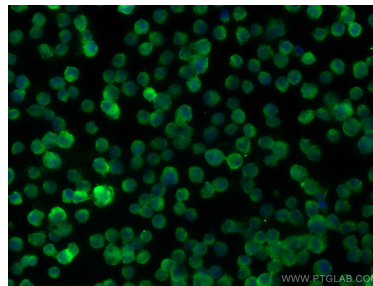
Immunohistochemical analysis of paraffin-embedded human tonsillitis tissue slide using 15862-1-AP (HLA-DRB1 antibody) at dilution of 1:200 (under 10x lens). Heat mediated antigen retrieval with Tris-EDTA buffer (pH 9.0).



Immunohistochemical analysis of paraffin-embedded human tonsillitis tissue slide using 15862-1-AP (HLA-DRB1 antibody) at dilution of 1:200 (under 40x lens). Heat mediated antigen retrieval with Tris-EDTA buffer (pH 9.0).



IP result of anti-HLA-DRB1 (IP:15862-1-AP, 4ug; Detection:15862-1-AP 1:500) with Raji cells lysate 2000ug.



Immunofluorescent analysis of (4% PFA) fixed Raji cells using HLA-DRB1 antibody (15862-1-AP) at dilution of 1:400 and CoraLite@488-Conjugated AffiniPure Goat Anti-Rabbit IgG(H+L) (SA00013-2).