

For Research Use Only

CAP2 Polyclonal antibody

Catalog Number: 15865-1-AP

Featured Product

7 Publications



Basic Information

Catalog Number:

15865-1-AP

Size:

150ul, Concentration: 650 ug/ml by Nanodrop;

Source:

Rabbit

Isotype:

IgG

Immunogen Catalog Number:

AG8477

GenBank Accession Number:

BC008481

GeneID (NCBI):

10486

UNIPROT ID:

P40123

Full Name:

CAP, adenylate cyclase-associated protein, 2 (yeast)

Calculated MW:

477 aa, 53 kDa

Observed MW:

53 kDa

Purification Method:

Antigen affinity purification

Recommended Dilutions:

WB 1:1000-1:6000

IP 0.5-4.0 ug for 1.0-3.0 mg of total protein lysate

IHC 1:20-1:200

IF/ICC 1:50-1:500

Applications

Tested Applications:

WB, IHC, IF/ICC, IP, ELISA

Cited Applications:

WB, IHC, IF, CoIP

Species Specificity:

human, mouse, rat

Cited Species:

human, mouse, rat

Note-IHC: suggested antigen retrieval with TE buffer pH 9.0; (*) Alternatively, antigen retrieval may be performed with citrate buffer pH 6.0

Positive Controls:

WB: PC-3 cells, mouse skeletal muscle tissue, mouse testis tissue, mouse heart tissue, HepG2 cells, mouse kidney tissue, rat testis tissue, human kidney tissue

IP: mouse testis tissue,

IHC: human liver cancer tissue, human skeletal muscle tissue

IF/ICC: U2OS cells,

Background Information

CAPs (CAP1 and CAP2) are evolutionarily conserved proteins with roles in regulating the actin cytoskeleton and in signal transduction. CAP2 is predominantly expressed in brain, heart and skeletal muscle, and skin. It is found in the nucleus in undifferentiated myoblasts and at the M-line of differentiated myotubes. Overexpression of CAP2 has been reported in many cancers, including hepatocellular carcinoma (HCC), human breast cancer, and malignant melanoma.

Notable Publications

Author	Pubmed ID	Journal	Application
Mert Colpan	33742108	Commun Biol	WB, IF
Anna Di Maio	35163460	Int J Mol Sci	WB
Lara-Jane Kepser	33637797	Sci Rep	WB

Storage

Storage:

Store at -20°C. Stable for one year after shipment.

Storage Buffer:

PBS with 0.02% sodium azide and 50% glycerol pH 7.3.

Aliquoting is unnecessary for -20°C storage

*** 20ul sizes contain 0.1% BSA

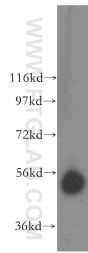
For technical support and original validation data for this product please contact:

T: 1 (888) 4PTGLAB (1-888-478-4522) (toll free in USA), or 1(312) 455-8498 (outside USA)

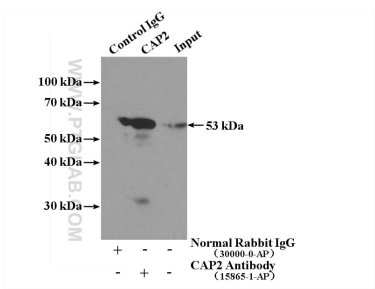
E: proteintech@ptglab.com
W: ptglab.com

This product is exclusively available under Proteintech Group brand and is not available to purchase from any other manufacturer.

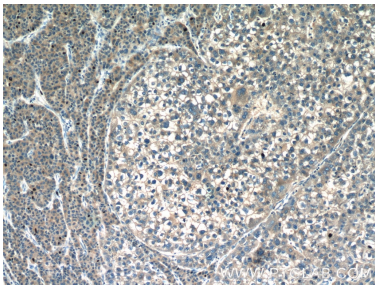
Selected Validation Data



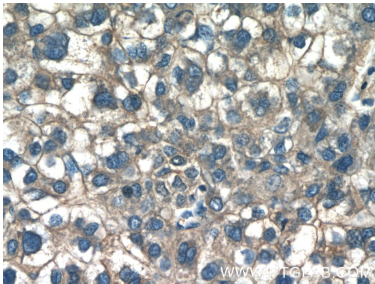
human kidney tissue were subjected to SDS PAGE followed by western blot with 15865-1-AP (CAP2 antibody) at dilution of 1:400 incubated at room temperature for 1.5 hours.



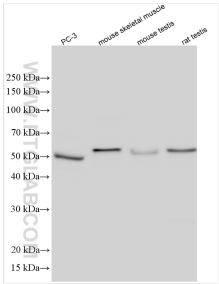
IP result of anti-CAP2 (IP:15865-1-AP, 4ug; Detection:15865-1-AP 1:1000) with mouse testis tissue lysate 4000ug.



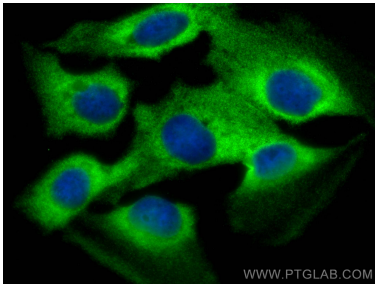
Immunohistochemical analysis of paraffin-embedded human liver cancer tissue slide using 15865-1-AP (CAP2 Antibody) at dilution of 1:50 (under 10x lens).



Immunohistochemical analysis of paraffin-embedded human liver cancer tissue slide using 15865-1-AP (CAP2 Antibody) at dilution of 1:50 (under 40x lens).



Various lysates were subjected to SDS PAGE followed by western blot with 15865-1-AP (CAP2 antibody) at dilution of 1:3000 incubated at room temperature for 1.5 hours.



Immunofluorescent analysis of (-20°C Methanol) fixed U2OS cells using CAP2 antibody (15865-1-AP) at dilution of 1:200 and CoraLite®488-Conjugated Goat Anti-Rabbit IgG(H+L).