

For Research Use Only

# SPANXE Polyclonal antibody

Catalog Number: 15870-1-AP



## Basic Information

<b>Catalog Number:</b> 15870-1-AP	<b>GenBank Accession Number:</b> BC005382	<b>Purification Method:</b> Antigen affinity purification
<b>Size:</b> 150ul , Concentration: 150 ug/ml by Nanodrop and 147 ug/ml by Bradford method using BSA as the standard;	<b>GeneID (NCBI):</b> 171489	<b>Recommended Dilutions:</b> WB 1:200-1:1000 IF/ICC 1:20-1:200
<b>Source:</b> Rabbit	<b>UNIPROT ID:</b> Q8TAD1	
<b>Isotype:</b> IgG	<b>Full Name:</b> SPANX family, member E	
<b>Immunogen Catalog Number:</b> AG8572	<b>Calculated MW:</b> 97 aa, 11 kDa	
	<b>Observed MW:</b> 15-20 kDa	

## Applications

<b>Tested Applications:</b> WB, IF/ICC, ELISA	<b>Positive Controls:</b>
<b>Species Specificity:</b> human, mouse	<b>WB :</b> A375 cells, mouse skin tissue <b>IF/ICC :</b> A375 cells,

## Background Information

SPANXE (Sperm protein associated with the nucleus on the X chromosome E), also known as SPANX A2 or SPANX C, is a member of the SPANX family. The SPANX genes encode differentially expressed testis-specific proteins that localize to various subcellular compartments. This particular gene encodes a sperm protein that contains a consensus nuclear localization signal but, although a role in spermatogenesis is suggested, the specific function of this family member has not yet been determined.

## Storage

**Storage:**  
Store at -20°C. Stable for one year after shipment.  
**Storage Buffer:**  
PBS with 0.02% sodium azide and 50% glycerol pH 7.3.  
Aliquoting is unnecessary for -20°C storage

\*\*\* 20ul sizes contain 0.1% BSA

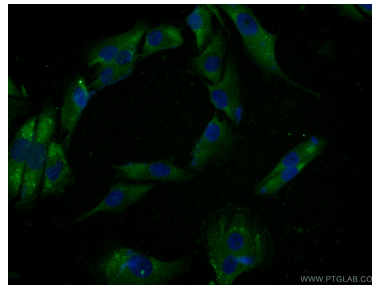
For technical support and original validation data for this product please contact:  
T: 1 (888) 4PTGLAB (1-888-478-4522) (toll free in USA), or 1(312) 455-8498 (outside USA)  
E: [proteintech@ptglab.com](mailto:proteintech@ptglab.com)  
W: [ptglab.com](http://ptglab.com)

This product is exclusively available under Proteintech Group brand and is not available to purchase from any other manufacturer.

## Selected Validation Data



A375 cells were subjected to SDS PAGE followed by western blot with 15870-1-AP (SPANXE antibody) at dilution of 1:300 incubated at room temperature for 1.5 hours.



Immunofluorescent analysis of A375 cells using 15870-1-AP (SPANXE antibody) at dilution of 1:50 and Alexa Fluor 488-conjugated Goat Anti-Rabbit IgG(H+L).