

Glycophorin A Polyclonal antibody

Catalog Number: 15874-1-AP

Basic Information

Catalog Number: 15874-1-AP	GenBank Accession Number: BC005319	Purification Method: Antigen affinity purification
Size: 150ul , Concentration: 650 ug/ml by Nanodrop and 333 ug/ml by Bradford method using BSA as the standard;	GeneID (NCBI): 2993	Recommended Dilutions: WB 1:500-1:1000 IHC 1:50-1:500 IF-P 1:300-1:1200
Source: Rabbit	UNIPROT ID: P02724	
Isotype: IgG	Full Name: glycophorin A (MNS blood group)	
Immunogen Catalog Number: AG8635	Calculated MW: 150 aa, 16 kDa	
	Observed MW: 36-38 kDa	

Applications

Tested Applications: WB, IHC, IF-P, ELISA	Positive Controls:
Species Specificity: human	WB : K-562 cells,
Note-IHC: suggested antigen retrieval with TE buffer pH 9.0; (*) Alternatively, antigen retrieval may be performed with citrate buffer pH 6.0	IHC : human spleen tissue, human colon cancer tissue, human lung tissue
	IF-P : human placenta tissue,

Background Information

Glycophorin A (GYPA) is the major transmembrane sialoglycoprotein in erythrocytes. It is a dimeric type I transmembrane protein carrying 15 closely clustered O-linked tetrasaccharides capped with sialic acid/N-acetylneuraminic acid (Neu5Ac). This 36 kDa protein represents the major sialoglycoprotein of the red blood cell membrane displaying about one million copies per cell. (PMID: 9490702)

Storage

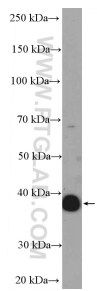
Storage:
Store at -20°C. Stable for one year after shipment.
Storage Buffer:
PBS with 0.02% sodium azide and 50% glycerol pH 7.3.
Aliquoting is unnecessary for -20°C storage

*** 20ul sizes contain 0.1% BSA

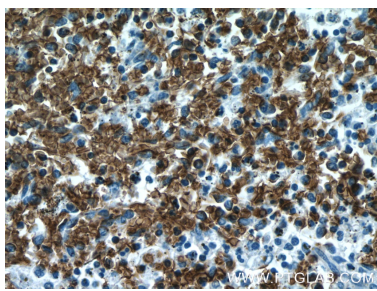
For technical support and original validation data for this product please contact:
T: 1 (888) 4PTGLAB (1-888-478-4522) (toll free in USA), or 1(312) 455-8498 (outside USA)
E: proteintech@ptglab.com
W: ptglab.com

This product is exclusively available under Proteintech Group brand and is not available to purchase from any other manufacturer.

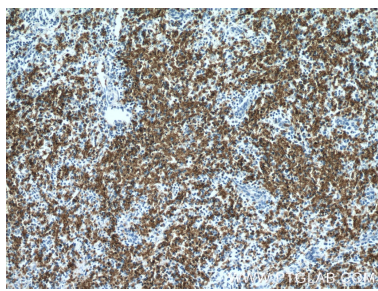
Selected Validation Data



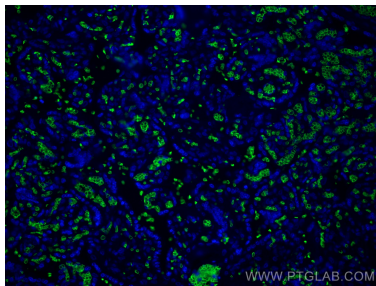
K-562 cells were subjected to SDS PAGE followed by western blot with 15874-1-AP (Glycophorin A antibody at dilution of 1:600 incubated at room temperature for 1.5 hours.



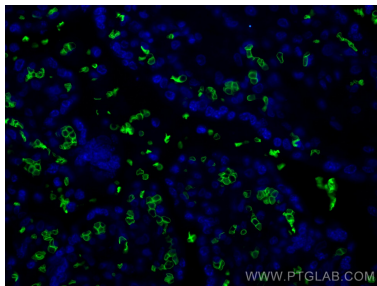
Immunohistochemical analysis of paraffin-embedded human spleen tissue slide using 15874-1-AP (Glycophorin A antibody) at dilution of 1:200 (under 40x lens).



Immunohistochemical analysis of paraffin-embedded human spleen tissue slide using 15874-1-AP (Glycophorin A antibody) at dilution of 1:200 (under 10x lens).



Immunofluorescent analysis of (4% PFA) fixed human placenta tissue using Glycophorin A antibody (15874-1-AP) at dilution of 1:600 and CoraLite®488-Conjugated AffiniPure Goat Anti-Rabbit IgG(H+L).



Immunofluorescent analysis of (4% PFA) fixed human placenta tissue using Glycophorin A antibody (15874-1-AP) at dilution of 1:600 and CoraLite®488-Conjugated AffiniPure Goat Anti-Rabbit IgG(H+L).