

For Research Use Only

# Sorbitol dehydrogenase Polyclonal antibody



Catalog Number: 15881-1-AP

Featured Product

5 Publications

## Basic Information

**Catalog Number:**  
15881-1-AP

**Size:**  
150ul, Concentration: 400 µg/ml by Nanodrop and 273 µg/ml by Bradford method using BSA as the standard;

**Source:**  
Rabbit

**Isotype:**  
IgG

**Immunogen Catalog Number:**  
AG8651

**GenBank Accession Number:**  
BC021085

**GeneID (NCBI):**  
6652

**Full Name:**  
sorbitol dehydrogenase

**Calculated MW:**  
357 aa, 38 kDa

**Observed MW:**  
38 kDa

**Purification Method:**  
Antigen affinity purification

**Recommended Dilutions:**  
WB 1:2000-1:16000  
IP 0.5-4.0 ug for IP and 1:500-1:2000 for WB

## Applications

**Tested Applications:**  
IP, WB, ELISA

**Cited Applications:**  
IF, WB

**Species Specificity:**  
human, mouse, rat

**Cited Species:**  
rat, mouse

**Positive Controls:**

**WB:** HeLa cells, human kidney tissue, rat liver tissue, mouse liver tissue

**IP:** mouse liver tissue,

## Background Information

SORD (Sorbitol dehydrogenase) is also named as L-iditol 2-dehydrogenase and belongs to the zinc-containing alcohol dehydrogenase family. It catalyzes the interconversion of polyols and their corresponding ketoses, and together with aldose reductase, makes up the sorbitol pathway that is believed to play an important role in the development of diabetic complications. This protein can form a homotetramer (PMID:12962626). Measurement of SORD is a specific indicator of liver cell damage and parenchymal.

## Notable Publications

Author	Pubmed ID	Journal	Application
Yu Sun	29349500	J Mol Med (Berl)	WB
Jingbo Dai	26647419	Reproduction	WB, IF
Ana Andres-Hernando	37892451	Nutrients	WB

## Storage

**Storage:**

Store at -20°C. Stable for one year after shipment.

**Storage Buffer:**

PBS with 0.02% sodium azide and 50% glycerol pH 7.3.

Aliquoting is unnecessary for -20°C storage

\*\*\* 20ul sizes contain 0.1% BSA

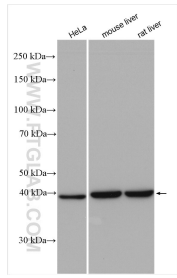
For technical support and original validation data for this product please contact:

T: 1 (888) 4PTGLAB (1-888-478-4522) (toll free in USA), or 1(312) 455-8498 (outside USA)

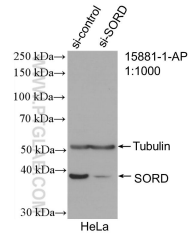
E: proteintech@ptglab.com  
W: ptglab.com

This product is exclusively available under Proteintech Group brand and is not available to purchase from any other manufacturer.

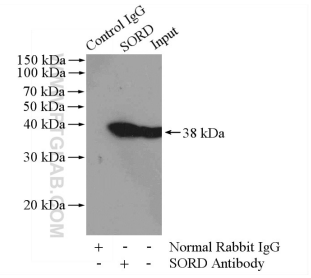
## Selected Validation Data



Various lysates were subjected to SDS PAGE followed by western blot with 15881-1-AP (Sorbitol dehydrogenase antibody) at dilution of 1:8000 incubated at room temperature for 1.5 hours.



WB result of Sorbitol dehydrogenase antibody (15881-1-AP; 1:1000; incubated at room temperature for 1.5 hours) with sh-Control and sh-Sorbitol dehydrogenase transfected HeLa cells.



IP Result of anti-Sorbitol dehydrogenase (IP:15881-1-AP, 4 $\mu$ g; Detection:15881-1-AP 1:1000) with mouse liver tissue lysate 4000 $\mu$ g.