

For Research Use Only

# RNASE1 Polyclonal antibody

Catalog Number: 15892-1-AP

1 Publications



## Basic Information

### Catalog Number:

15892-1-AP

### Size:

150ul, Concentration: 650 ug/ml by Nanodrop;

### Source:

Rabbit

### Isotype:

IgG

### Immunogen Catalog Number:

AG8679

### GenBank Accession Number:

BC005324

### GeneID (NCBI):

6035

### UNIPROT ID:

P07998

### Full Name:

ribonuclease, RNase A family, 1 (pancreatic)

### Calculated MW:

156 aa, 18 kDa

### Observed MW:

18 kDa

### Purification Method:

Antigen affinity purification

### Recommended Dilutions:

WB 1:2000-1:12000

## Applications

### Tested Applications:

WB, ELISA

### Cited Applications:

WB

### Species Specificity:

Mouse, rat, human

### Cited Species:

mouse

### Positive Controls:

WB: mouse pancreas tissue, mouse stomach tissue, rat pancreas tissue

## Notable Publications

Author	Pubmed ID	Journal	Application
Yong Jin	39205658	Am J Physiol Renal Physiol	WB

## Storage

### Storage:

Store at -20°C. Stable for one year after shipment.

### Storage Buffer:

PBS with 0.02% sodium azide and 50% glycerol pH 7.3.

Aliquoting is unnecessary for -20°C storage

\*\*\* 20ul sizes contain 0.1% BSA

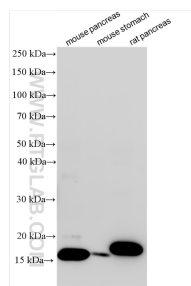
For technical support and original validation data for this product please contact:

T: 1 (888) 4PTGLAB (1-888-478-4522) (toll free in USA), or 1(312) 455-8498 (outside USA)

E: [proteintech@ptglab.com](mailto:proteintech@ptglab.com)  
W: [ptglab.com](http://ptglab.com)

This product is exclusively available under Proteintech Group brand and is not available to purchase from any other manufacturer.

## Selected Validation Data



Various lysates were subjected to SDS PAGE followed by western blot with 15892-1-AP (RNASE1 antibody) at dilution of 1:6000 incubated at room temperature for 1.5 hours.