

For Research Use Only

# SH3GLB2 Polyclonal antibody

Catalog Number: 15897-1-AP

Featured Product

2 Publications



## Basic Information

<b>Catalog Number:</b> 15897-1-AP	<b>GenBank Accession Number:</b> BC014635	<b>Purification Method:</b> Antigen affinity purification
<b>Size:</b> 150ul, Concentration: 213 µg/ml by Bradford method using BSA as the standard;	<b>GeneID (NCBI):</b> 56904	<b>Recommended Dilutions:</b> WB 1:500-1:2000 IP 0.5-4.0 ug for 1.0-3.0 mg of total protein lysate IHC 1:500-1:2000 IF 1:20-1:200
<b>Source:</b> Rabbit	<b>Full Name:</b> SH3-domain GRB2-like endophilin B2	
<b>Isotype:</b> IgG	<b>Calculated MW:</b> 395 aa, 44 kDa	
<b>Immunogen Catalog Number:</b> AG8712	<b>Observed MW:</b> 47-50 kDa	

## Applications

**Tested Applications:**  
IF, IHC, IP, WB, ELISA

**Cited Applications:**  
IF, WB

**Species Specificity:**  
human, mouse, rat

**Cited Species:**  
human, mouse

**Note-IHC: suggested antigen retrieval with TE buffer pH 9.0; (\*) Alternatively, antigen retrieval may be performed with citrate buffer pH 6.0**

**Positive Controls:**

**WB:** HeLa cells, human testis tissue, mouse lung tissue, mouse testis tissue, rat lung tissue

**IP:** HeLa cells,

**IHC:** mouse brain tissue, human placenta tissue

**IF:** HeLa cells,

## Background Information

SH3GLB2 is an endophilin-related protein family with 395-amino acid protein and contains an N-terminal domain, a central coiled-coil region, and a C-terminal SH3 domain. SH3GLB2 is expressed in many tissues, including skeletal muscle, adipocytes, brain, lung, colon, and mammary gland. SH3GLB2 was expressed in the cytoplasm of transfected HeLa cells and was excluded from nuclei (PMID: 11161816).

## Notable Publications

Author	Pubmed ID	Journal	Application
David B Wang	30028551	Brain Pathol	WB
Jacob M Serfass	28455444	J Biol Chem	WB,IF

## Storage

**Storage:**

Store at -20°C. Stable for one year after shipment.

**Storage Buffer:**

PBS with 0.02% sodium azide and 50% glycerol pH 7.3.

Aliquoting is unnecessary for -20°C storage

\*\*\* 20ul sizes contain 0.1% BSA

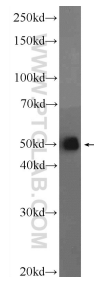
For technical support and original validation data for this product please contact:

T: 1 (888) 4PTGLAB (1-888-478-4522) (toll free in USA), or 1(312) 455-8498 (outside USA)

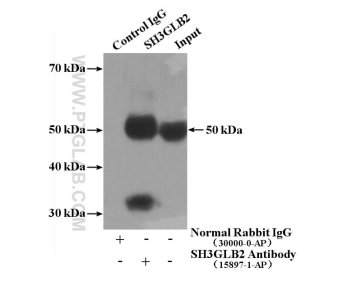
E: proteintech@ptglab.com  
W: ptglab.com

This product is exclusively available under Proteintech Group brand and is not available to purchase from any other manufacturer.

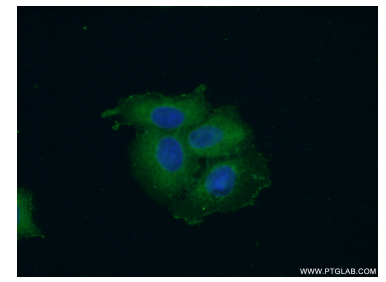
## Selected Validation Data



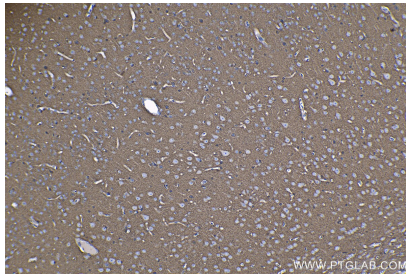
HeLa cells were subjected to SDS PAGE followed by western blot with 15897-1-AP (SH3GLB2 Antibody) at dilution of 1:1000 incubated at room temperature for 1.5 hours.



IP Result of anti-SH3GLB2 (IP:15897-1-AP, 4ug; Detection:15897-1-AP 1:1000) with HeLa cells lysate 2600ug.



Immunofluorescent analysis of (-20°C Ethanol) fixed HeLa cells using 15897-1-AP (SH3GLB2 antibody) at dilution of 1:50 and Alexa Fluor 488-conjugated AffiniPure Goat Anti-Rabbit IgG(H+L).



Immunohistochemical analysis of paraffin-embedded mouse brain tissue slide using 15897-1-AP (SH3GLB2 antibody) at dilution of 1:1000 (under 10x lens). Heat mediated antigen retrieval with Tris-EDTA buffer (pH 9.0).