

For Research Use Only

RAB11A/B Polyclonal antibody

Catalog Number: 15903-1-AP

Featured Product

30 Publications



Basic Information

Catalog Number: 15903-1-AP	GenBank Accession Number: BC013348	Purification Method: Antigen affinity purification
Size: 150ul , Concentration: 450 µg/ml by Nanodrop;	GeneID (NCBI): 8766	Recommended Dilutions: WB 1:500-1:2000 IP 0.5-4.0 ug for 1.0-3.0 mg of total protein lysate IHC 1:50-1:500 IF 1:200-1:800
Source: Rabbit	Full Name: RAB11A, member RAS oncogene family	
Isotype: IgG	Calculated MW: 216 aa, 24 kDa	
Immunogen Catalog Number: AG8742	Observed MW: 24 kDa	

Applications

Tested Applications:
IF, IHC, IP, WB, ELISA

Cited Applications:
CoIP, IF, IHC, WB

Species Specificity:
human, mouse

Cited Species:
human, mouse, monkey, pig, canine

Note-IHC: suggested antigen retrieval with TE buffer pH 9.0; (*) Alternatively, antigen retrieval may be performed with citrate buffer pH 6.0

Positive Controls:

WB: mouse spleen tissue, Jurkat cells, MCF-7 cells, SH-SY5Y cells, HeLa cells

IP: mouse spleen tissue,

IHC: human heart tissue,

IF: A549 cells, U2OS cells

Background Information

RAB11 has two isoform genes RAB11A(YL8) and RAB11B(YPT3), and belongs to the small GTPase superfamily and Rab family. It regulates endocytic recycling. RAB11 may exert its functions by interacting with multiple effector proteins in different complexes. It acts as a major regulator of membrane delivery during cytokinesis. RAB11 regulates the recycling of FCGR2 (receptor of Fc region of monomeric Ig G) to basolateral membranes. This antibody can recognize both RAB11A(24 kDa) and RAB11B(24 kDa).

Notable Publications

Author	Pubmed ID	Journal	Application
Jiang Du	33178272	J Oncol	WB,IHC
Yu Lian	30326930	J Exp Clin Cancer Res	WB
Wai Wa Ray Chan	33047393	FASEB J	WB,IF

Storage

Storage:

Store at -20°C. Stable for one year after shipment.

Storage Buffer:

PBS with 0.02% sodium azide and 50% glycerol pH 7.3.

Aliquoting is unnecessary for -20°C storage

*** 20ul sizes contain 0.1% BSA

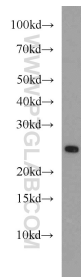
For technical support and original validation data for this product please contact:

T: 1 (888) 4PTGLAB (1-888-478-4522) (toll free in USA), or 1(312) 455-8498 (outside USA)

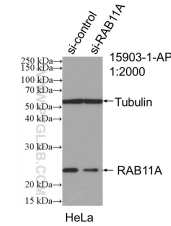
E: proteintech@ptglab.com
W: ptglab.com

This product is exclusively available under Proteintech Group brand and is not available to purchase from any other manufacturer.

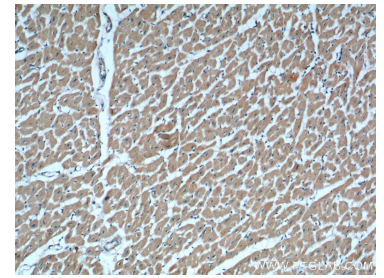
Selected Validation Data



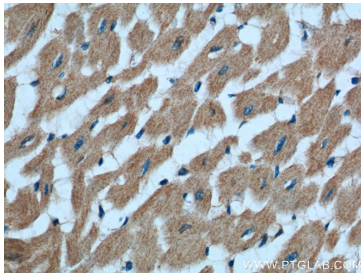
mouse spleen tissue were subjected to SDS PAGE followed by western blot with 15903-1-AP (RAB11A/B antibody) at dilution of 1:1000 incubated at room temperature for 1.5 hours.



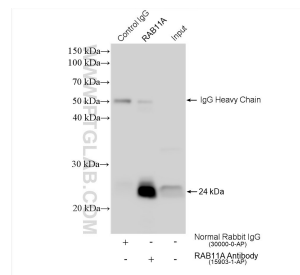
WB result of RAB11A/B antibody (15903-1-AP; 1:2000; incubated at room temperature for 1.5 hours) with sh-Control and sh-RAB11A/B transfected HeLa cells.



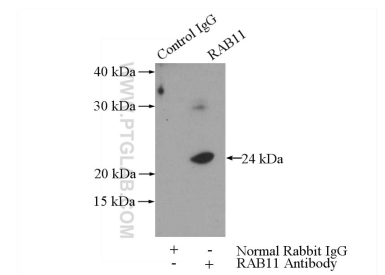
Immunohistochemical analysis of paraffin-embedded human heart tissue slide using 15903-1-AP (RAB11A/B antibody) at dilution of 1:200 (under 10x lens).



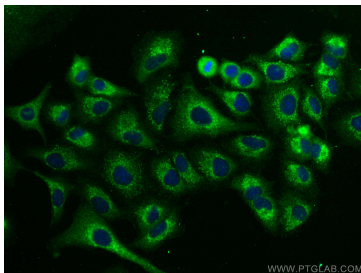
Immunohistochemical analysis of paraffin-embedded human heart tissue slide using 15903-1-AP (RAB11A/B antibody) at dilution of 1:200 (under 40x lens).



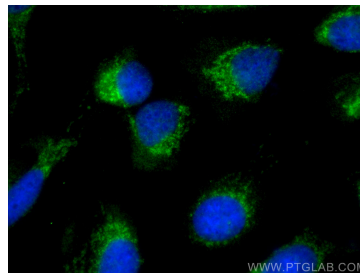
IP result of anti-RAB11A/B (IP:15903-1-AP, 4ug; Detection:15903-1-AP 1:1000) with mouse spleen tissue lysate 1920 ug.



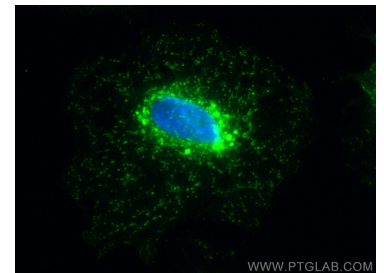
IP Result of anti-RAB11A/B (IP:15903-1-AP, 3ug; Detection:15903-1-AP 1:500) with mouse spleen tissue lysate 4000ug.



Immunofluorescent analysis of (-20°C Methanol) fixed A549 cells using RAB11A/B antibody (15903-1-AP) at dilution of 1:400 and CoraLite@488-Conjugated AffiniPure Goat Anti-Rabbit IgG(H+L).



Immunofluorescent analysis of (-20°C Methanol) fixed U2OS cells using RAB11A/B antibody (15903-1-AP) at dilution of 1:400 and CoraLite@488-Conjugated AffiniPure Goat Anti-Rabbit IgG(H+L).



Immunofluorescent analysis of (-20°C Methanol) fixed A549 cells using RAB11A/B antibody (15903-1-AP) at dilution of 1:400 and CoraLite@488-Conjugated AffiniPure Goat Anti-Rabbit IgG(H+L).