

For Research Use Only

MDH1 Polyclonal antibody

Catalog Number:15904-1-AP

Featured Product

28 Publications



Basic Information

Catalog Number:

15904-1-AP

Size:

150ul , Concentration: 450 ug/ml by Nanodrop;

Source:

Rabbit

Isotype:

IgG

Immunogen Catalog Number:

AG8744

GenBank Accession Number:

BC001484

GeneID (NCBI):

4190

UNIPROT ID:

P40925

Full Name:

malate dehydrogenase 1, NAD (soluble)

Calculated MW:

334 aa, 36 kDa

Observed MW:

36 kDa

Purification Method:

Antigen affinity purification

Recommended Dilutions:

WB 1:5000-1:50000

IP 0.5-4.0 ug for 1.0-3.0 mg of total protein lysate

IHC 1:50-1:500

IF/ICC 1:300-1:1200

Applications

Tested Applications:

WB, IHC, IF/ICC, FC (Intra), IP, ELISA

Cited Applications:

WB, IHC, IF, IP

Species Specificity:

human, mouse, rat

Cited Species:

human, mouse, rat

Note-IHC: suggested antigen retrieval with TE buffer pH 9.0; (*) Alternatively, antigen retrieval may be performed with citrate buffer pH 6.0

Positive Controls:

WB : HepG2 cells, HL-60 cells, HEK-293 cells, mouse liver tissue, rat liver tissue

IP : HepG2 cells,

IHC : human renal cell carcinoma tissue, human liver cancer tissue, rat heart tissue, mouse kidney tissue

IF/ICC : HepG2 cells,

Background Information

MDH1 (Malate dehydrogenase, cytoplasmic) is also named as MDHA and belongs to the LDH/MDH superfamily and MDH type 2 family which catalyzes the reversible oxidation of malate to oxaloacetate, utilizing the NAD/NADH cofactor system in the citric acid cycle. It can exist as a dimer and the dimeric MDH1 is the mitochondrial isoenzyme, whereas the tetrameric MDH2 is the glycosomal isoenzyme.(PMID:10693743)

Notable Publications

Author	Pubmed ID	Journal	Application
Teresa W-M Fan	36150727	J Immunol	
Xiaoyu Ma	25301052	Nat Commun	WB
Jia-Yuan Zhang	34012073	Cell Res	WB

Storage

Storage:

Store at -20°C. Stable for one year after shipment.

Storage Buffer:

PBS with 0.02% sodium azide and 50% glycerol pH 7.3.

Aliquoting is unnecessary for -20°C storage

*** 20ul sizes contain 0.1% BSA

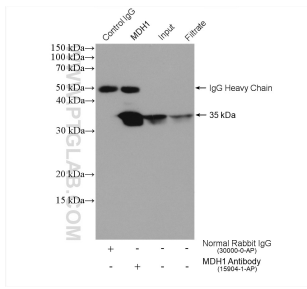
For technical support and original validation data for this product please contact:

T: 1 (888) 4PTGLAB (1-888-478-4522) (toll free in USA), or 1(312) 455-8498 (outside USA)

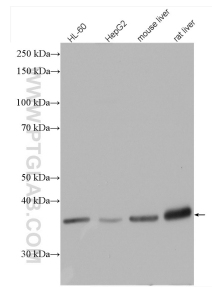
E: proteintech@ptglab.com
W: ptglab.com

This product is exclusively available under Proteintech Group brand and is not available to purchase from any other manufacturer.

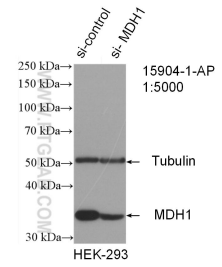
Selected Validation Data



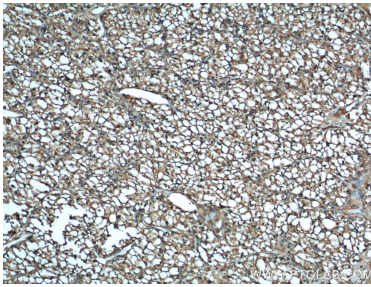
IP result of anti-MDH1 (IP:15904-1-AP, 4ug; Detection:15904-1-AP 1:10000) with HepG2 cells lysate 960 ug.



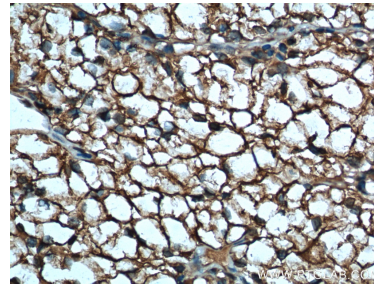
HepG2 cells were subjected to SDS PAGE followed by western blot with 15904-1-AP (MDH1 antibody) at dilution of 1:15000 incubated at room temperature for 1.5 hours.



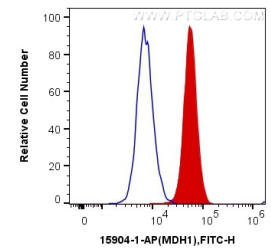
WB result of MDH1 antibody (15904-1-AP; 1:5000; incubated at room temperature for 1.5 hours) with sh-Control and sh-MDH1 transfected HEK-293 cells.



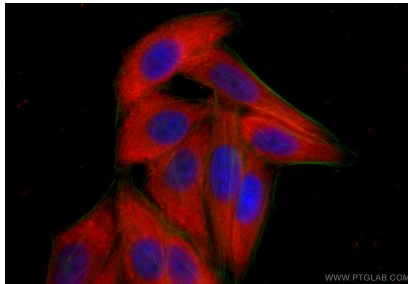
Immunohistochemical analysis of paraffin-embedded human renal cell carcinoma tissue slide using 15904-1-AP (MDH1 Antibody) at dilution of 1:1000 (under 10x lens). Heat mediated antigen retrieval with Tris-EDTA buffer (pH 9.0).



Immunohistochemical analysis of paraffin-embedded human renal cell carcinoma tissue slide using 15904-1-AP (MDH1 Antibody) at dilution of 1:100 (under 40x lens). Heat mediated antigen retrieval with Tris-EDTA buffer (pH 9.0).



1×10^6 HepG2 cells were intracellularly stained with 0.4 ug Anti-Human MDH1 (15904-1-AP) and CoraLite®488-Conjugated AffiniPure Goat Anti-Rabbit IgG(H+L) at dilution 1:1000 (red), or 0.4 ug x. Cells were fixed with 4% PFA and permeabilized with Flow Cytometry Perm Buffer (PF00011-C).



Immunofluorescent analysis of (-20°C Ethanol) fixed HepG2 cells using MDH1 antibody (15904-1-AP) at dilution of 1:600 and CoraLite®594-Conjugated Goat Anti-Rabbit IgG(H+L) (SA00013-4), CL488-Phalloidin (green).