

For Research Use Only

UBE1 Polyclonal antibody

Catalog Number:15912-1-AP

Featured Product

13 Publications



Basic Information

Catalog Number:

15912-1-AP

Size:

150ul , Concentration: 550 ug/ml by Nanodrop;

Source:

Rabbit

Isotype:

IgG

Immunogen Catalog Number:

AG8703

GenBank Accession Number:

BC013041

GeneID (NCBI):

7317

UNIPROT ID:

P22314

Full Name:

ubiquitin-like modifier activating enzyme 1

Calculated MW:

1058 aa, 118 kDa

Observed MW:

114-118 kDa

Purification Method:

Antigen affinity purification

Recommended Dilutions:

WB 1:500-1:3000

IHC 1:200-1:1500

Applications

Tested Applications:

WB, IHC, ELISA

Cited Applications:

WB, IHC

Species Specificity:

human, mouse, rat

Cited Species:

human, mouse

Positive Controls:

WB : HL-60 cells, HeLa cells, HEK-293 cells, mouse spleen tissue, rat spleen tissue, mouse colon tissue

IHC : human colon cancer tissue, human normal colon

Note-IHC: suggested antigen retrieval with TE buffer pH 9.0; (*) Alternatively, antigen retrieval may be performed with citrate buffer pH 6.0

Background Information

UBE1(Ubiquitin-activating enzyme E1) is also named as A159T, UBE1 and belongs to the ubiquitin-activating E1 family. It catalyzes the first step in ubiquitin conjugation to mark cellular proteins for degradation and initiates the activation and conjugation of ubiquitin-like proteins. Defects in UBE1 are the cause of spinal muscular atrophy X-linked type 2 (SMA2). UBE1 has two isoforms with the molecular mass of 118 and 114 kDa.

Notable Publications

Author	Pubmed ID	Journal	Application
Yuhong Zhang	34628513	J Mol Med (Berl)	WB
Minghao Yan	36385231	Mol Neurobiol	WB
Zheng Xu	35411229	Am J Cancer Res	WB

Storage

Storage:

Store at -20°C. Stable for one year after shipment.

Storage Buffer:

PBS with 0.02% sodium azide and 50% glycerol pH 7.3.

Aliquoting is unnecessary for -20°C storage

*** 20ul sizes contain 0.1% BSA

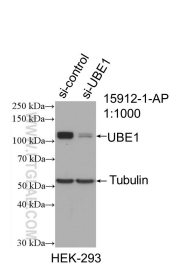
For technical support and original validation data for this product please contact:

T: 1 (888) 4PTGLAB (1-888-478-4522) (toll free in USA), or 1(312) 455-8498 (outside USA)

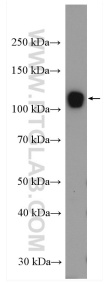
E: proteintech@ptglab.com
W: ptglab.com

This product is exclusively available under Proteintech Group brand and is not available to purchase from any other manufacturer.

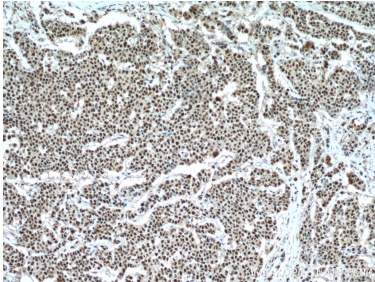
Selected Validation Data



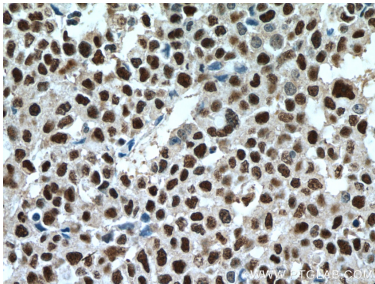
WB result of UBE1 antibody (15912-1-AP; 1:1000; incubated at room temperature for 1.5 hours) with sh-Control and sh-UBE1 transfected HEK-293 cells.



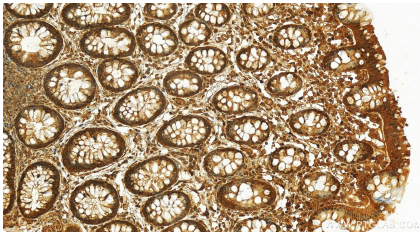
HL-60 cells were subjected to SDS PAGE followed by western blot with 15912-1-AP (UBE1 antibody) at dilution of 1:1500 incubated at room temperature for 1.5 hours.



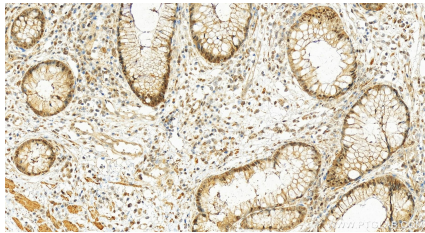
Immunohistochemical analysis of paraffin-embedded human colon cancer tissue slide using 15912-1-AP (UBE1 antibody) at dilution of 1:200 (under 10x lens). Heat mediated antigen retrieval with Tris-EDTA buffer (pH 9.0).



Immunohistochemical analysis of paraffin-embedded human colon cancer tissue slide using 15912-1-AP (UBE1 antibody) at dilution of 1:200 (under 40x lens). Heat mediated antigen retrieval with Tris-EDTA buffer (pH 9.0).



Immunohistochemical analysis of paraffin-embedded human colon tissue slide using 15912-1-AP (UBE1 antibody) at dilution of 1:300 (under 20x lens). Heat mediated antigen retrieval with Tris-EDTA buffer (pH 9.0).



Immunohistochemical analysis of paraffin-embedded human colon cancer tissue slide using 15912-1-AP (UBE1 antibody) at dilution of 1:1200 (under 20x lens). Heat mediated antigen retrieval with Tris-EDTA buffer (pH 9.0).