

For Research Use Only

MRPL38 Polyclonal antibody

Catalog Number: 15913-1-AP

3 Publications



Basic Information

Catalog Number:

15913-1-AP

Size:

150ul, Concentration: 720 ug/ml by Nanodrop;

Source:

Rabbit

Isotype:

IgG

Immunogen Catalog Number:

AG8706

GenBank Accession Number:

BC013311

GeneID (NCBI):

64978

UNIPROT ID:

Q96DV4

Full Name:

mitochondrial ribosomal protein L38

Calculated MW:

346 aa, 41 kDa

Observed MW:

37-45 kDa

Purification Method:

Antigen affinity purification

Recommended Dilutions:

WB 1:500-1:2000

IHC 1:50-1:500

Applications

Tested Applications:

WB, IHC, FC (Intra), ELISA

Cited Applications:

WB, IHC

Species Specificity:

human, mouse, rat

Cited Species:

mouse, rat

Note-IHC: suggested antigen retrieval with TE buffer pH 9.0; (*) Alternatively, antigen retrieval may be performed with citrate buffer pH 6.0

Positive Controls:

WB : mouse brain tissue,

IHC : human liver tissue, mouse brain tissue

Notable Publications

Author	Pubmed ID	Journal	Application
Mustafa Bilal Bayazit	35830789	Cell Rep	WB
Jana Key	38139332	Int J Mol Sci	WB
Takeshi Tanaka	30726815	J Toxicol Sci	IHC

Storage

Storage:

Store at -20°C. Stable for one year after shipment.

Storage Buffer:

PBS with 0.02% sodium azide and 50% glycerol pH 7.3.

Aliquoting is unnecessary for -20°C storage

*** 20ul sizes contain 0.1% BSA

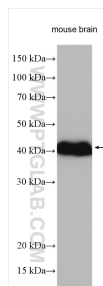
For technical support and original validation data for this product please contact:

T: 1 (888) 4PTGLAB (1-888-478-4522) (toll free in USA), or 1(312) 455-8498 (outside USA)

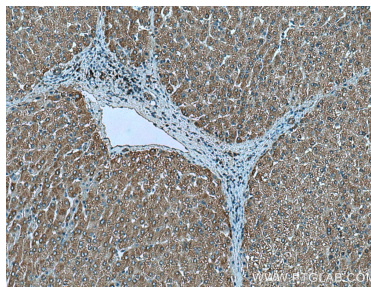
E: proteintech@ptglab.com
W: ptglab.com

This product is exclusively available under Proteintech Group brand and is not available to purchase from any other manufacturer.

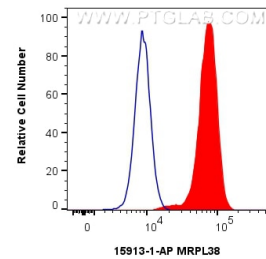
Selected Validation Data



mouse brain tissue were subjected to SDS PAGE followed by western blot with 15913-1-AP (MRPL38 antibody) at dilution of 1:1000 incubated at room temperature for 1.5 hours.



Immunohistochemical analysis of paraffin-embedded human liver tissue slide using 15913-1-AP (MRPL38 antibody) at dilution of 1:200 (under 10x lens). Heat mediated antigen retrieval with Tris-EDTA buffer (pH 9.0).



1x10⁶ HEK-293 cells were intracellularly stained with 0.5 ug MRPL38 Polyclonal antibody (15913-1-AP) and CoraLite®488-Conjugated Goat Anti-Rabbit IgG(H+L) (SA00013-2)(red), or 0.5 ug Rabbit IgG control Rabbit PolyAb (30000-0-AP) (blue). Cells were fixed with 4% PFA and permeabilized with Flow Cytometry Perm Buffer (PF00011-C).