

For Research Use Only

RHEB Polyclonal antibody

Catalog Number: 15924-1-AP

Featured Product

12 Publications



Basic Information

Catalog Number: 15924-1-AP	GenBank Accession Number: BC016155	Purification Method: Antigen affinity purification
Size: 150ul , Concentration: 500 µg/ml by Nanodrop and 333 µg/ml by Bradford method using BSA as the standard;	GeneID (NCBI): 6009	Recommended Dilutions: WB 1:1000-1:4000 IHC 1:50-1:500 IF 1:50-1:500
Source: Rabbit	Full Name: Ras homolog enriched in brain	
Isotype: IgG	Calculated MW: 184 aa, 20 kDa	
Immunogen Catalog Number: AG8747	Observed MW: 15-20 kDa	

Applications

Tested Applications: IF, IHC, WB, ELISA	Positive Controls:
Cited Applications: IF, IHC, WB	WB : DU 145 cells, human brain tissue, HeLa cells, 3T3-L1 cells, fetal human brain tissue
Species Specificity: human, mouse	IHC : human brain tissue, mouse brain tissue
Cited Species: human, rat, mouse	IF : human pancreas cancer tissue, HeLa cells
Note-IHC: suggested antigen retrieval with TE buffer pH 9.0; (*) Alternatively, antigen retrieval may be performed with citrate buffer pH 6.0	

Background Information

Rheb is a member of the Ras superfamily small GTPases that plays important roles in the regulation of protein synthesis and growth in response to nutrient and growth factors. It is well known to bind and activate mTOR, a serine/threonine kinase which augments protein synthesis. Rheb has GTPase activity and shuttles between a GDP-bound form and a GTP-bound form, and farnesylation of the protein is required for this activity.

Notable Publications

Author	Pubmed ID	Journal	Application
Min Zheng	26622727	Oncol Lett	WB,IHC
Meng Chen	34635641	Cell Death Discov	WB
Jinlin Lv	29017169	Cell Physiol Biochem	WB

Storage

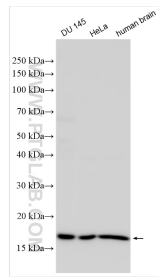
Storage:
Store at -20°C. Stable for one year after shipment.
Storage Buffer:
PBS with 0.02% sodium azide and 50% glycerol pH 7.3.
Aliquoting is unnecessary for -20°C storage

*** 20ul sizes contain 0.1% BSA

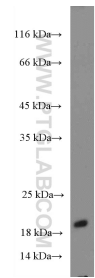
For technical support and original validation data for this product please contact:
T: 1 (888) 4PTGLAB (1-888-478-4522) (toll free in USA), or 1(312) 455-8498 (outside USA)
E: proteintech@ptglab.com
W: ptglab.com

This product is exclusively available under Proteintech Group brand and is not available to purchase from any other manufacturer.

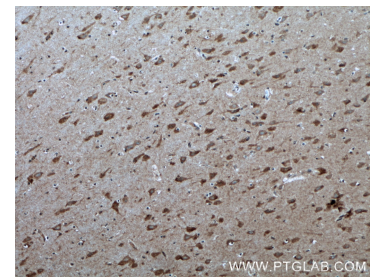
Selected Validation Data



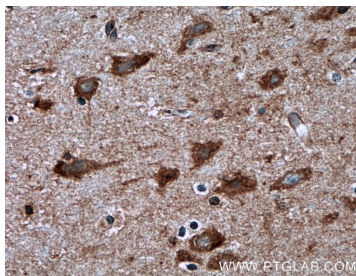
Various lysates were subjected to SDS PAGE followed by western blot with 15924-1-AP (RHEB antibody) at dilution of 1:2000 incubated at room temperature for 1.5 hours.



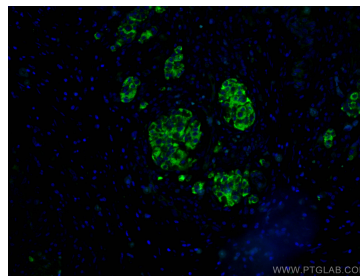
fetal human brain tissue were subjected to SDS PAGE followed by western blot with 15924-1-AP (RHEB Antibody) at dilution of 1:600 incubated at room temperature for 1.5 hours.



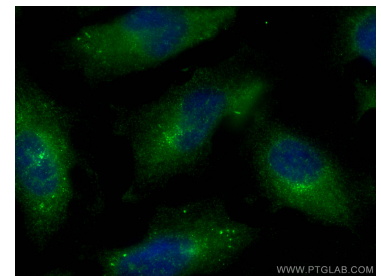
Immunohistochemical analysis of paraffin-embedded human brain tissue slide using 15924-1-AP (RHEB antibody) at dilution of 1:200 (under 10x lens. Heat mediated antigen retrieval with Tris-EDTA buffer (pH 9.0).



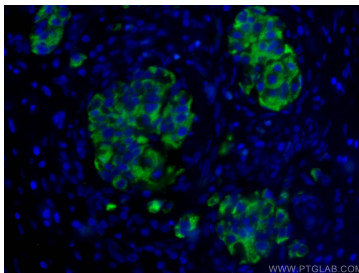
Immunohistochemical analysis of paraffin-embedded human brain tissue slide using 15924-1-AP (RHEB antibody) at dilution of 1:200 (under 40x lens. Heat mediated antigen retrieval with Tris-EDTA buffer (pH 9.0).



Immunofluorescent analysis of (4% PFA) fixed human pancreas cancer tissue using RHEB antibody (15924-1-AP) at dilution of 1:200 and CoraLite®488-Conjugated AffiniPure Goat Anti-Rabbit IgG(H+L).



Immunofluorescent analysis of (-20°C Methanol) fixed HeLa cells using RHEB antibody (15924-1-AP) at dilution of 1:100 and CoraLite®488-Conjugated AffiniPure Goat Anti-Rabbit IgG(H+L).



Immunofluorescent analysis of (4% PFA) fixed human pancreas cancer tissue using RHEB antibody (15924-1-AP) at dilution of 1:200 and CoraLite®488-Conjugated AffiniPure Goat Anti-Rabbit IgG(H+L).