

For Research Use Only

SLC12A4/KCC1 Polyclonal antibody, PBS Only

Catalog Number: 15927-1-PBS



Basic Information

Catalog Number:

15927-1-PBS

Size:

100ug, Concentration: 1 mg/ml by
Nanodrop;

Source:

Rabbit

Isotype:

IgG

Immunogen Catalog Number:

AG8762

GenBank Accession Number:

BC021193

GeneID (NCBI):

6560

UNIPROT ID:

Q9UP95

Full Name:

solute carrier family 12
(potassium/chloride transporters),
member 4

Calculated MW:

1085 aa, 121 kDa

Observed MW:

121 kDa

Purification Method:

Antigen affinity purification

Applications

Tested Applications:

WB, IHC, IP, Indirect ELISA

Species Specificity:

human, mouse, rat

Storage

Storage:

Store at -80°C.

Storage Buffer:

PBS only, pH7.3

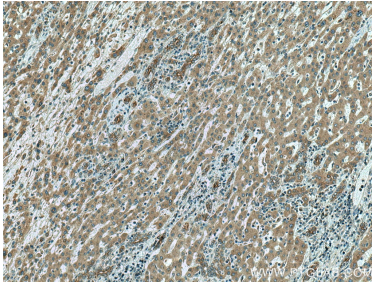
For technical support and original validation data for this product please contact:

T: 1 (888) 4PTGLAB (1-888-478-4522) (toll free
in USA), or 1(312) 455-8498 (outside USA)

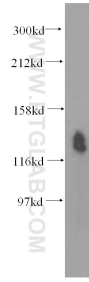
E: proteintech@ptglab.com
W: ptglab.com

This product is exclusively available under Proteintech Group brand and is not available to purchase from any other manufacturer.

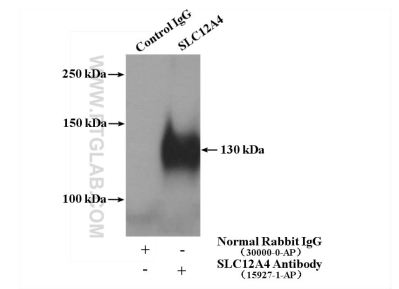
Selected Validation Data



Immunohistochemical analysis of paraffin-embedded human liver cancer tissue slide using 15927-1-AP (SLC12A4 antibody) at dilution of 1:200 (under 10x lens). Heat mediated antigen retrieval with Tris-EDTA buffer (pH 9.0). This data was developed using the same antibody clone with 15927-1-PBS in a different storage buffer formulation.



HeLa cells were subjected to SDS PAGE followed by western blot with 15927-1-AP (SLC12A4 antibody) at dilution of 1:400 incubated at room temperature for 1.5 hours. This data was developed using the same antibody clone with 15927-1-PBS in a different storage buffer formulation.



IP result of anti-SLC12A4 (IP:15927-1-AP, 4ug; Detection:15927-1-AP 1:500) with HeLa cells lysate 3200ug. This data was developed using the same antibody clone with 15927-1-PBS in a different storage buffer formulation.