

For Research Use Only

# Collagen Type II Polyclonal antibody



Catalog Number: 15943-1-AP

59 Publications

## Basic Information

**Catalog Number:**

15943-1-AP

**Size:**

150ul , Concentration: 193 µg/ml by Bradford method using BSA as the standard;

**Source:**

Rabbit

**Isotype:**

IgG

**Immunogen Catalog Number:**

AG8416

**GenBank Accession Number:**

BC007252

**GeneID (NCBI):**

1280

**UNIPROT ID:**

P02458

**Full Name:**

collagen, type II, alpha 1

**Calculated MW:**

134 kDa

**Purification Method:**

Antigen affinity purification

**Recommended Dilutions:**

IHC 1:20-1:200

## Applications

**Tested Applications:**

IHC, ELISA

**Cited Applications:**

IF, IHC

**Species Specificity:**

human

**Cited Species:**

human, rat, mouse, rabbit, pig

**Note-IHC: suggested antigen retrieval with TE buffer pH 9.0; (\*) Alternatively, antigen retrieval may be performed with citrate buffer pH 6.0**

**Positive Controls:**

IHC : human lung tissue,

## Notable Publications

Author	Pubmed ID	Journal	Application
Yongzhuang Ma	31512108	Inflammation	
Shengfeng Zhan	31478571	J Cell Physiol	
Yan Sun	36099329	Reproduction	IHC

## Storage

**Storage:**

Store at -20°C. Stable for one year after shipment.

**Storage Buffer:**

PBS with 0.02% sodium azide and 50% glycerol pH 7.3.

Aliquoting is unnecessary for -20°C storage

\*\*\* 20ul sizes contain 0.1% BSA

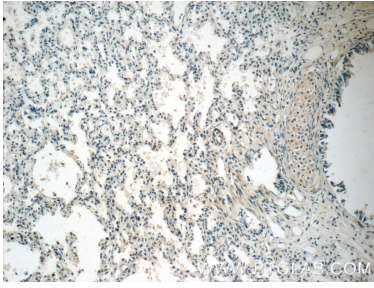
For technical support and original validation data for this product please contact:

T: 1 (888) 4PTGLAB (1-888-478-4522) (toll free in USA), or 1(312) 455-8498 (outside USA)

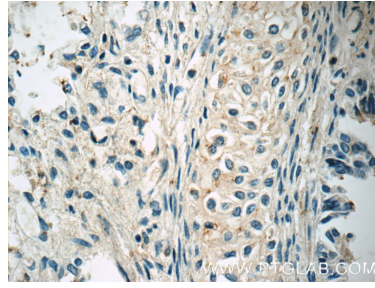
E: proteintech@ptglab.com  
W: ptglab.com

This product is exclusively available under Proteintech Group brand and is not available to purchase from any other manufacturer.

## Selected Validation Data



Immunohistochemical analysis of paraffin-embedded human lung tissue slide using 15943-1-AP (Collagen Type II antibody at dilution of 1:50 (under 10x lens).



Immunohistochemical analysis of paraffin-embedded human lung tissue slide using 15943-1-AP (Collagen Type II antibody at dilution of 1:50 (under 40x lens).