

For Research Use Only

LYL1 Polyclonal antibody

Catalog Number: 15946-1-AP



Basic Information

Catalog Number:

15946-1-AP

Size:

150ul, Concentration: 450 ug/ml by Nanodrop;

Source:

Rabbit

Isotype:

IgG

Immunogen Catalog Number:

AG8528

GenBank Accession Number:

BC002796

GeneID (NCBI):

4066

UNIPROT ID:

P12980

Full Name:

Lymphoblastic leukemia derived sequence 1

Calculated MW:

30 kDa

Observed MW:

35-40 kDa

Purification Method:

Antigen affinity purification

Recommended Dilutions:

IP 0.5-4.0 ug for 1.0-3.0 mg of total protein lysate

Applications

Tested Applications:

IP, ELISA

Species Specificity:

human

Positive Controls:

IP: K-562 cells,

Background Information

Lymphoblastic leukemia1 (LYL1) is a proto-oncogenic transcription factor found upregulated in patients with T-cell acute lymphoblastic leukemia (T-cell ALL). LYL1 has an important role in hematopoietic stem cell biology, normal hematopoiesis and leukemia. It is expressed throughout the hematopoietic lineages with the exception of T-cells. LYL1 shows two bands in the WB detection, where the upper band is the phosphorylated form and the lower band is the non-phosphorylated form (PMID: 10023675, PMID: 20844761).

Storage

Storage:

Store at -20°C. Stable for one year after shipment.

Storage Buffer:

PBS with 0.02% sodium azide and 50% glycerol pH 7.3.

Aliquoting is unnecessary for -20°C storage

*** 20ul sizes contain 0.1% BSA

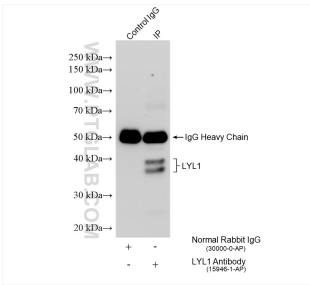
For technical support and original validation data for this product please contact:

T: 1 (888) 4PTGLAB (1-888-478-4522) (toll free in USA), or 1(312) 455-8498 (outside USA)

E: proteintech@ptglab.com
W: ptglab.com

This product is exclusively available under Proteintech Group brand and is not available to purchase from any other manufacturer.

Selected Validation Data



IP result of anti-LYL1 (IP:15946-1-AP, 4ug;
Detection:15946-1-AP 1:500) with K-562 cells
lysate 1800 ug.